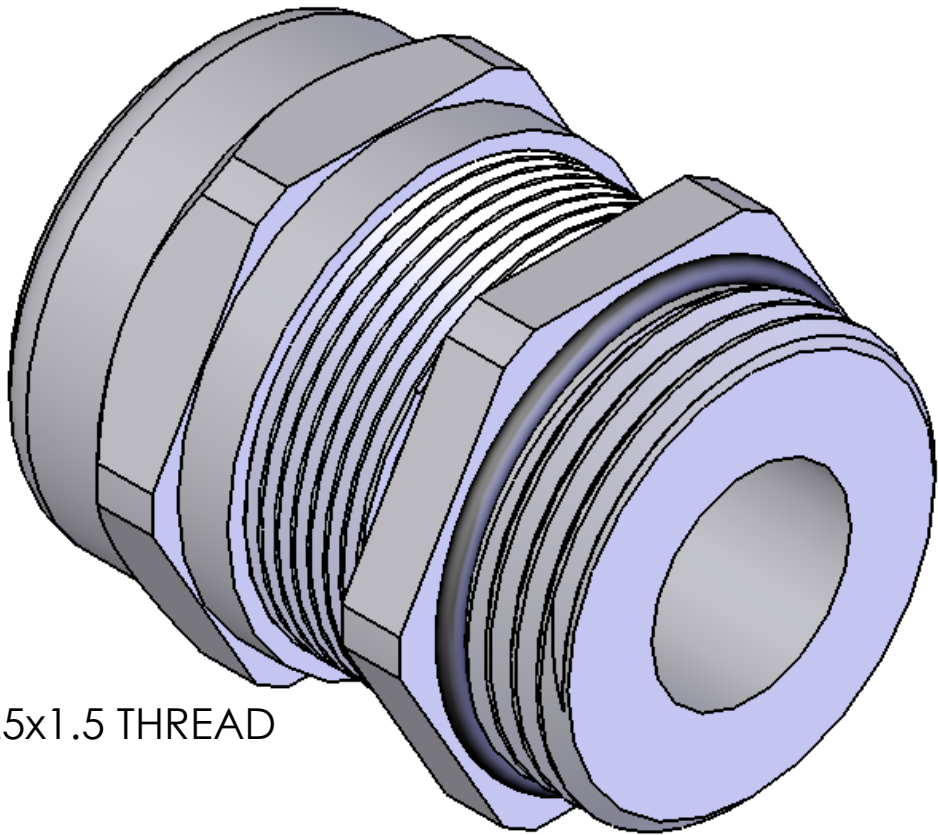
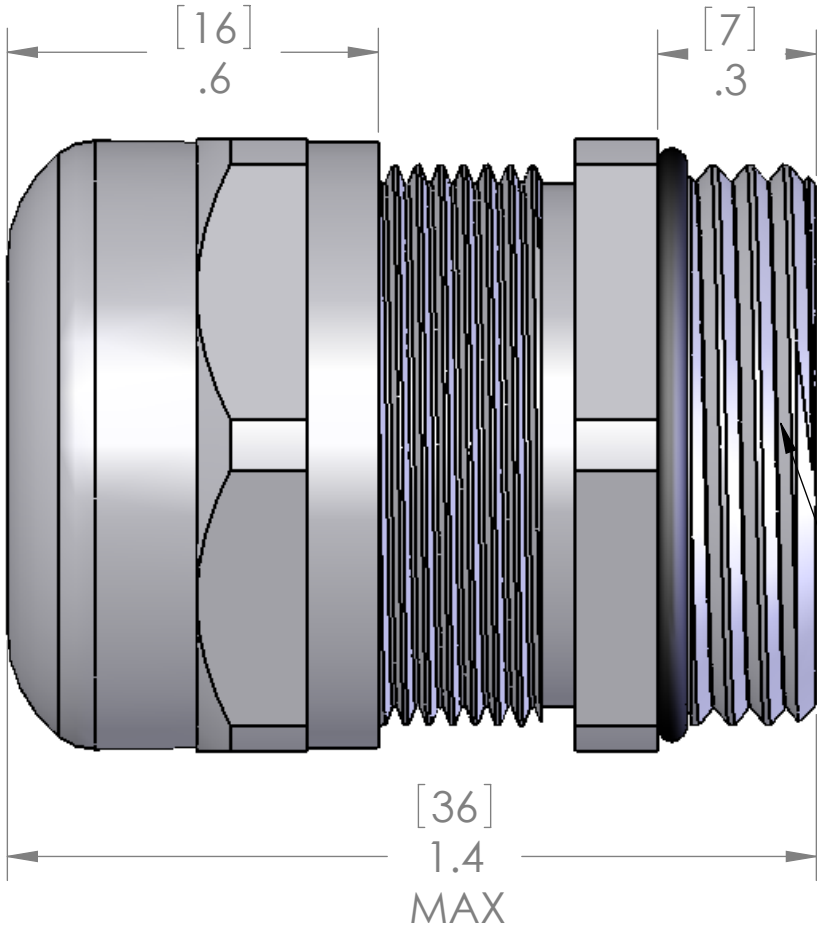
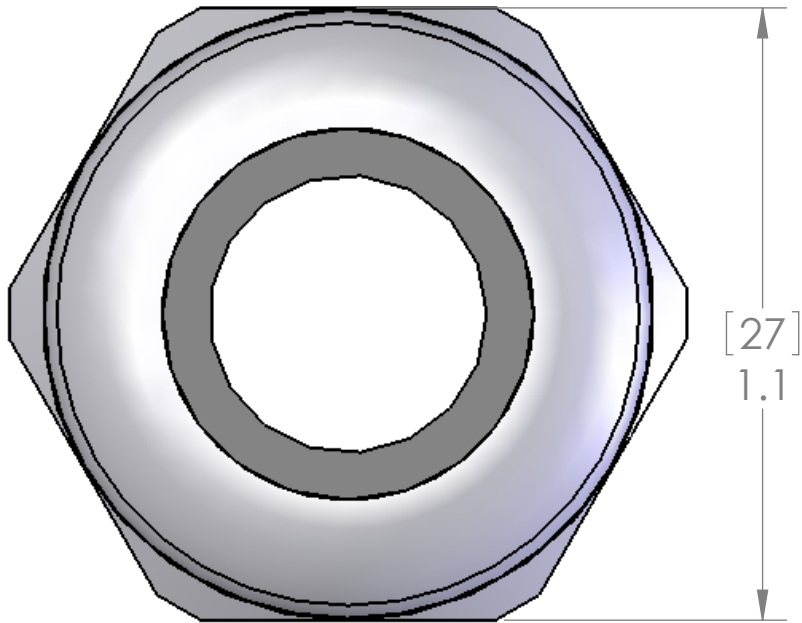


This is a shielding cable gland. For cables with a shield, the shield needs to be folded slightly around the gray plastic insert to allow the shield to be pinched between the gray plastic insert and the bottom of the gland.



M25x1.5 THREAD

LOCK NUT INCLUDED BUT NOT SHOWN

SEALING RANGE: 0.315" - 0.630" (8 - 16 MM)
SEAL RATED TO: IP68
RECOMMENDED HOLE: 25.5MM

MATERIALS:	
BODY:	NICKEL PLATED BRASS
INSERT:	POLYAMIDE
GROMMET:	NEOPRENE
LOCK NUT:	NICKEL PLATED BRASS
O-RING:	BUNA-N

PROPRIETARY AND CONFIDENTIAL
THE INFORMATION CONTAINED IN THIS DRAWING IS THE SOLE PROPERTY OF MENCOM CORPORATION. ANY REPRODUCTION IN PART OR AS A WHOLE WITHOUT THE WRITTEN PERMISSION OF MENCOM CORPORATION IS PROHIBITED.

UNLESS OTHERWISE SPECIFIED:		NAME	MENCOM CORPORATION	
DIMENSIONS ARE IN INCHES & [MM]	DRAWN	BEM	TITLE:	
	CHECKED			
	ENG APPR.			
	MFG APPR.			
	Q.A.			
MATERIAL	COMMENTS:		SIZE	DWG. NO.
FINISH			B	MCGB-M25
DO NOT SCALE DRAWING		SCALE: 3:1	WEIGHT:	SHEET 1 OF 1

D

C

B

A