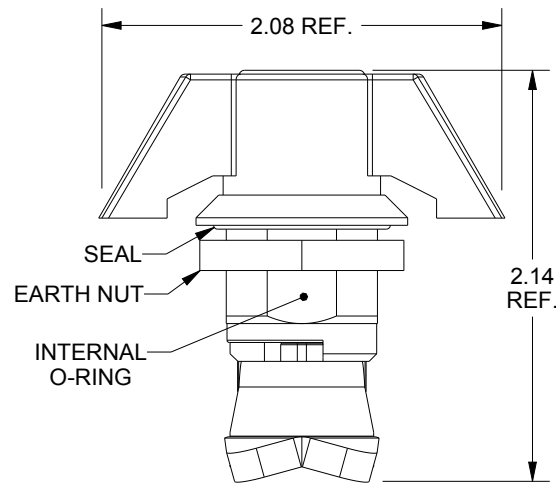
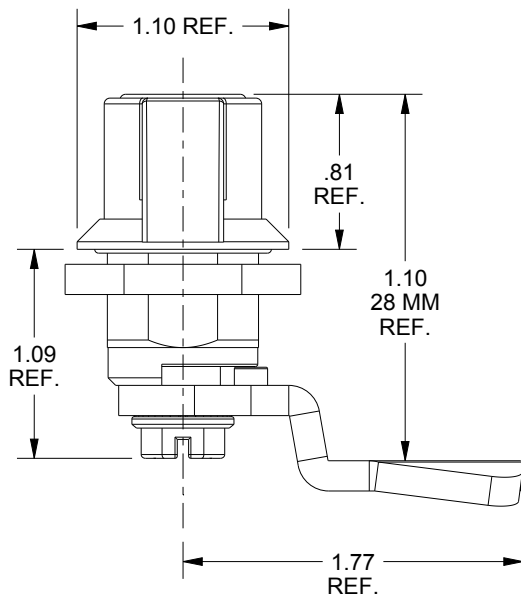
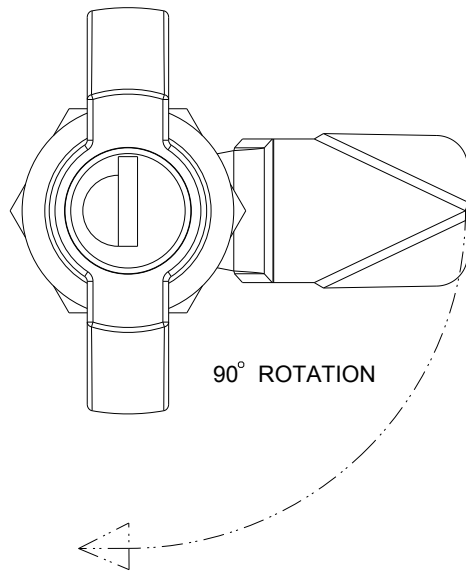
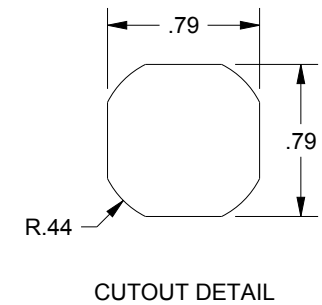
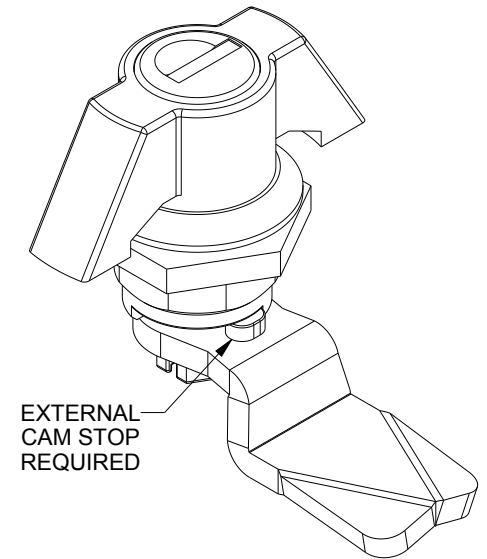


SAGINAW CONTROL & ENGINEERING

SCE-KLWN, PART I.D. 101081



TO MAINTAIN TYPE
3, 3R, 4, 4X & 12



DESCRIPTION:
QUARTER TURN, WING KNOB, KEYLOCKING W/(2)
K333 KEYS, EXTERNAL CAM STOP, CAM INCLUDED
28 MM. ZINC DIE CAST, CHROME PLATED