



Cable Glands Accessories

KADP Cable Entry System



KADP Cable Entry Plate | ILME Size 24 Panel Cutout | IP66 Rating



| Part Number | # of Entries | Cable Diameter Range | | | | | | | | | | |
|--------------|--------------|-----------------------|-----------------------|-----------------------|-----------------------|-----------------------|-----------------------|------------------------|------------------------|------------------------|------------------------|-------------------------|
| | | 1.5 ~ 2.6 mm | 2.5 ~ 5.0 mm | 3.0 ~ 5.5 mm | 3.0 ~ 6.5 mm | 4.1 ~ 8.1 mm | 5.0 ~ 9.2 mm | 8.0 ~ 12.0 mm | 8.0 ~ 12.5 mm | 9.0 ~ 14.0 mm | 9.6 ~ 15.9 mm | 14.0 ~ 20.0 mm |
| KADP-24-11 | 11 | | | | 4 | | 4 | | | | | 3 |
| KADP-24-12 | 12 | | | | | | | 12 | | | | |
| KADP-24-13 | 13 | | | 2 | | 6 | | | | 4 | | 1 |
| KADP-24-14 | 14 | | | | 6 | | 4 | | | | 4 | |
| KADP-24-17 | 17 | | | | | | 17 | | | | | |
| KADP-24-17-1 | 17 | | | | 11 | 1 | | | 5 | | | |
| KADP-24-22 | 22 | | | | 16 | | 4 | | 2 | | | |
| KADP-24-23 | 23 | | | | | 23 | | | | | | |
| KADP-24-29 | 29 | | | | 29 | | | | | | | |
| KADP-24-BLI | 0 | | | | | | | | | | | |

Application

For introduction of cables, hoses, pneumatic and hydraulic lines

Benefits

Fast and simple installation

Up to 10 times faster than with cable glands

Space savings of over 50%

Mounting

Usable on panel cutouts Size 24 ILME industrial multipole connectors (e.g. Harting or Wieland), mounting in wall thicknesses from 1.5 to 2.0mm. For plates with thicknesses greater than 2.0 mm the cable entry plate KADP can be attached with screws.

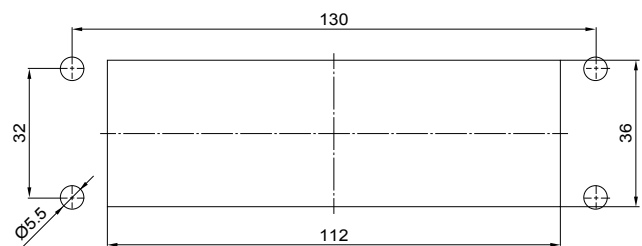
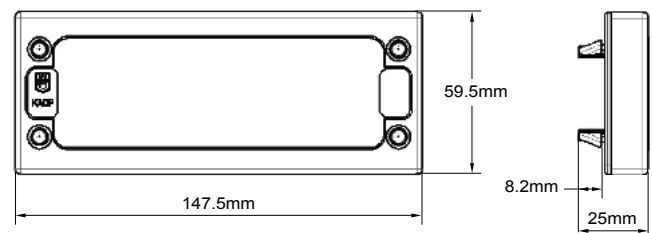
Specifications:

Flange: Polyamide PA6 V-0

Elastomeric Plate: EPDM

Sealing: TPE

Temperature: -30°C to +100°C (-22°F to +212°F)



Hole Dimensions