



# Ethernet Series Etherlink V3

## 8 Conductor Ethernet Series Receptacles, 24AWG

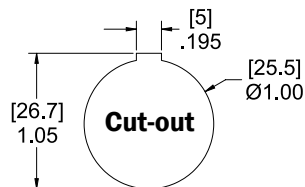


Female Front Mount Receptacles | 42 VDC, 1.5 amps | UL Type 4, 4X, 6P | IP65 Rating



Etherlink V3 Female Receptacle to Male Plug with CAT5e Cable						
# of Poles	Front View	Rating	Wire AWG	Cap (E45V3-CAP)	Part Number	Housing Style
8		42V 1.5A	24	Not Included	E45V3-8FMR-*-M25	
				Included	E45V3-8FMR-*-M25-CP	
Etherlink V3 Female Receptacle to 110 Punchdown Block						
8		N/A	20-26	Not Included	E45V3-8FR-110-M25	
				Included	E45V3-8FR-110-M25-CP	
Etherlink V3 Female Receptacle to Female Receptacles						
8		N/A	N/A	Not Included	E45V3-8FFR-M25	
				Included	E45V3-8FFR-M25-CP	
Etherlink V3 Field Wireable to Female Receptacle Solder to Board						
8		N/A	N/A	Not Included	E45V3-8FR-FW-M25	
				Included	E45V3-8FR-FW-M25-CP	

\* Length in feet. Standard cable lengths are 1, 3, 7, 10 & 15 feet. Consult factory for other lengths.



### Specifications:

Insulator:	Polyamide
Cable:	CAT5e with PVC Jacket
Contacts:	Copper Alloy with Gold Plating
O-Ring:	NBR
Tightening Torque:	5.0 N-m
Max. Panel Thickness:	5.5 mm
Temperature:	-40°C to +80°C (-40°F to +176°F)

Etherlink V3 Accessories	
Cap	Part Number
	E45V3-CAP
Protective Lock Nut	
	Protective lock nut provided with each receptacle.