

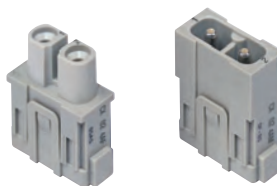
CX 02 4AF/4AM - CX 02 4BF/4BM 2 poles 40A - 1000V

The modular inserts must be installed in suitable frames which are then mounted in traditional enclosures or in COB panel support.
Single-sized modular units may be directly mounted inside MIXO ONE enclosures.

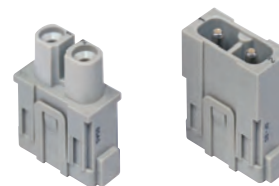
frames for modular units page: 316 - 317

MIXO ONE enclosures 369

modular units,
screw terminal connection
2,5 - 8 mm²



modular units,
screw terminal connection
6 - 10 mm²



description

part No.

part No

female inserts with female contacts

CX 02 4AF

male inserts with male contacts

CX 02 4AM

female inserts with female contacts

CX 02 4BF

male inserts with male contacts

CX 02 4BM

- use flexible cables with sections from 2,5 to 10 mm² or extra flexible cables with sections from 2,5 to 6 mm²
- do not twist the cables
- fully insert the braids in the rear section of the contact

conductor section (mm ²)	conductor stripping length (mm)	tightening torque (Nm)
2,5	5+1	1,5
4	5+1	1,5
6	8+1	2
10	8+1	2

- insert a 2 mm hexagonal key in the front section of the contact and tighten by keeping the cable held down in position
- a 2 mm hexagonal key can be supplied on request, reference CX AS

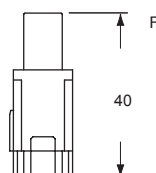
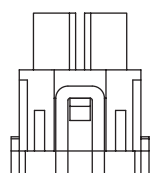
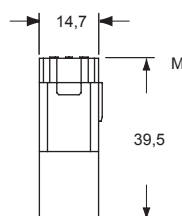
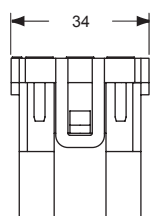
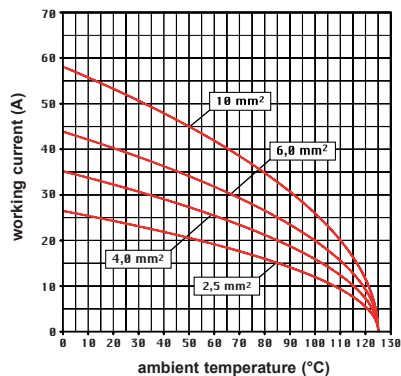


- characteristics according to EN 61984:

40A 1000V 8kV 3
40A 1600V 12kV 2

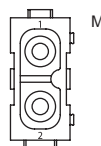
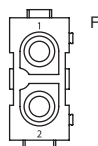
- certified
- rated voltage according to UL/CSA: 600V
- insulation resistance: $\geq 10 \text{ G}\Omega$
- ambient temperature limit: -40 °C ... +125 °C
- made of self-extinguishing thermoplastic resin UL 94V-0
- mechanical life: ≥ 500 cycles
- contact resistance: $\leq 0,5 \text{ m}\Omega$
- for max. current load see the connector inserts derating diagram below; for more information see page 28

CX 02 4A/B, 2 poles connector inserts
Maximum current load derating diagram

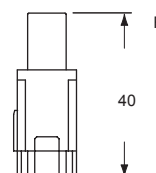
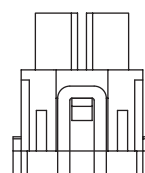
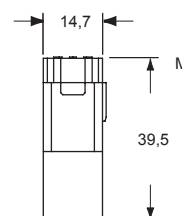
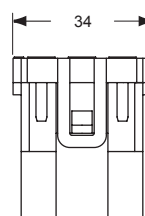


contacts side (front view)

side with reference arrow ▲

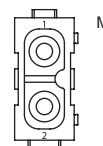
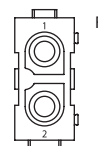


- inserts for Ø 4mm cables, section: 2,5-8 mm² - AWG 14-8
- 1 frame slot



contacts side (front view)

side with reference arrow ▲



- inserts for Ø 4,8 mm cables, section: 6-10 mm² - AWG 10-8
- 1 frame slot