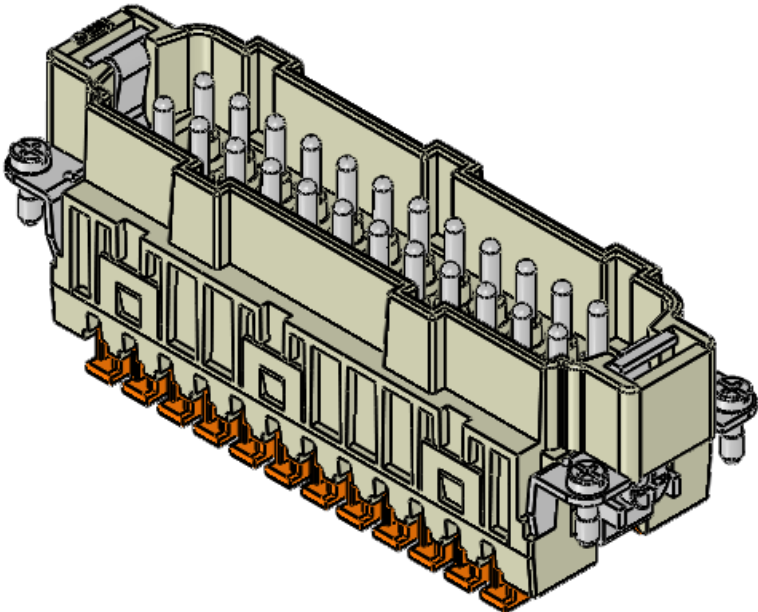
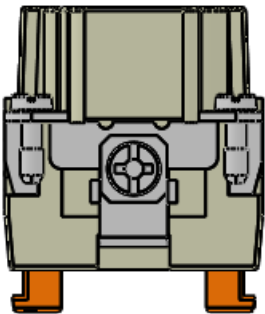
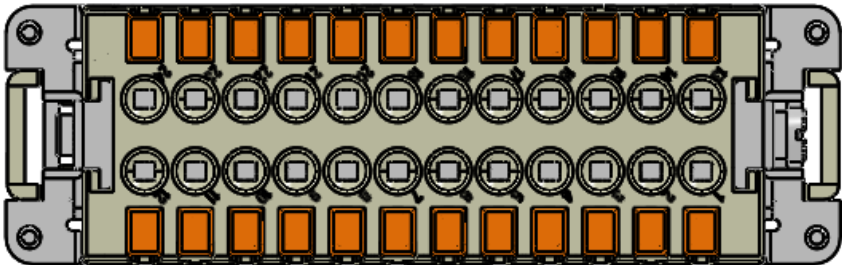
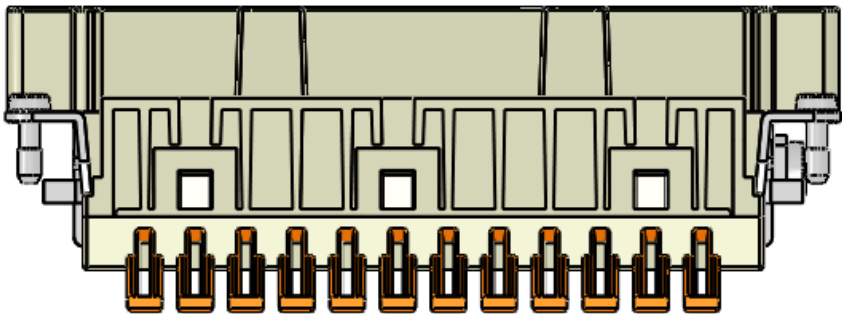
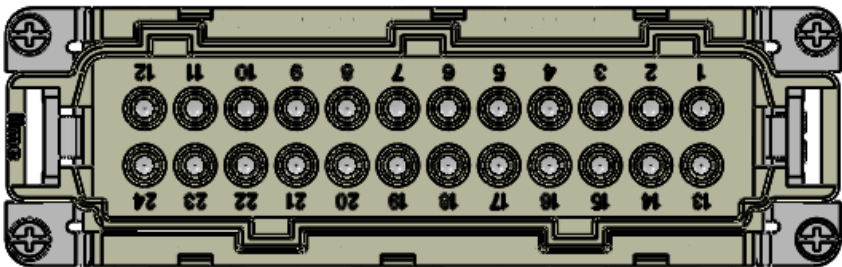


| REVISIONS | | | |
|-----------|---------------|------------|----------|
| REV. | DESCRIPTION | DATE | APPROVED |
| A | Redrawn in SW | 11/26/2008 | |



Connection made via spring clamp.

To use: Strip Wires 0.35" - 0.43" (9 - 11mm)
Placed stripped wire into opening and
press down on orange tab. This will lock the wire
into place. Proceed to next terminal.
(ferruled wires may be used as well)

Acceptable wire AWG: 14 - 24AWG [2.5 - 0.14 sqmm]

| MATERIALS | |
|------------|--|
| HOUSING: | GLASS REINFORCED THERMOPLASTIC |
| CONTACTS: | NICKEL PLATED BRASS HARDWARE |
| SCREWS: | SILVER PLATED COPPER ALLOY |
| SCREWS: | NICKEL PLATED STEEL |
| RATINGS: | UL / CSA - 600V, 16A. EN 250V/4kV/3, 10A |
| TEMP: | -40°C - +125°C ambient |
| APPROVALS: | UL, CSA, & CCC |

PROPRIETARY AND CONFIDENTIAL
THE INFORMATION CONTAINED IN THIS
DRAWING IS THE SOLE PROPERTY OF
MENCOM CORPORATION. ANY
REPRODUCTION IN PART OR AS A WHOLE
WITHOUT THE WRITTEN PERMISSION OF
MENCOM CORPORATION IS
PROHIBITED.

| | | | | | | |
|--|--|-----------------------------------|------------|--------------------|--|--------------|
| | | UNLESS OTHERWISE SPECIFIED: | NAME | MENCOM CORPORATION | | |
| | | DIMENSIONS ARE IN INCHES AND [MM] | DRAWN | DWM | TITLE: 24 PL MAL SQUICH INSERT | |
| | | | CHECKED | | | |
| | | | ENG APPR. | | | |
| | | | MFG APPR. | | | |
| | | | Q.A. | | | |
| | | | COMMENTS: | | SIZE DWG. NO. REV B CSHM-24 A | |
| | | MATERIAL | | | | |
| | | FINISH | | | | |
| | | DO NOT SCALE DRAWING | SCALE: 1:1 | | WEIGHT: | SHEET 1 OF 1 |

REV
A