

D

D

C

C

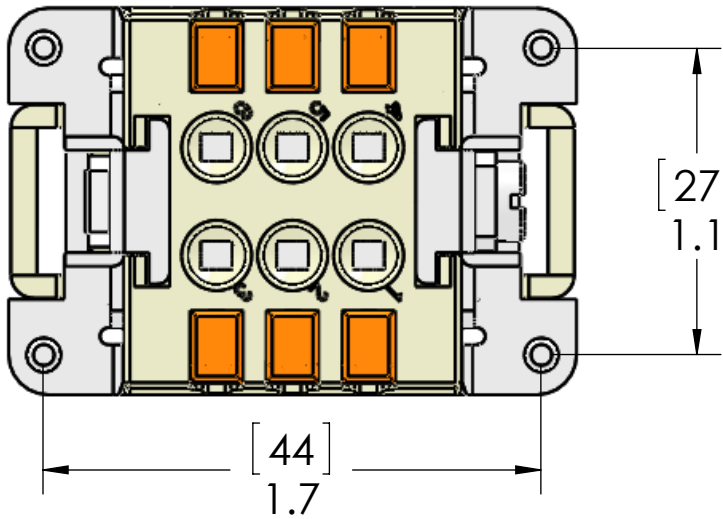
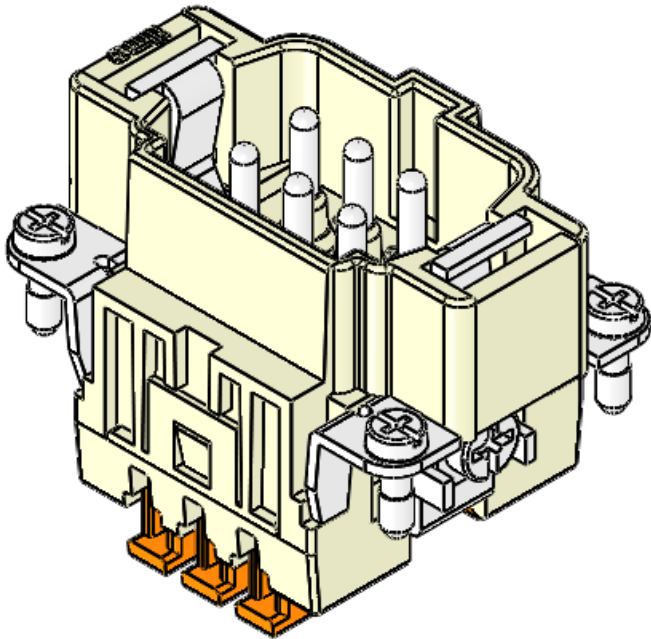
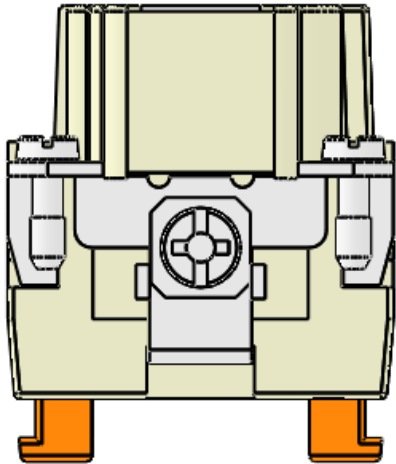
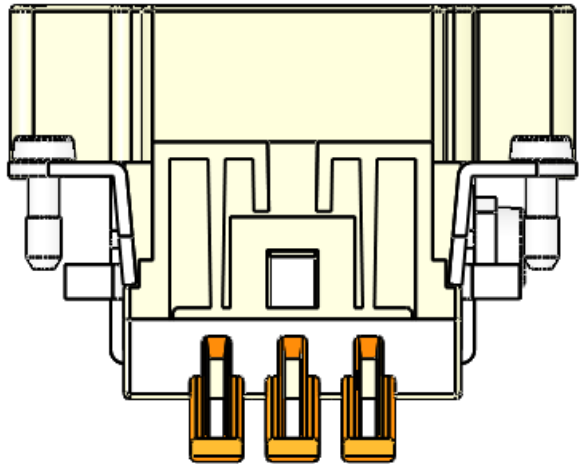
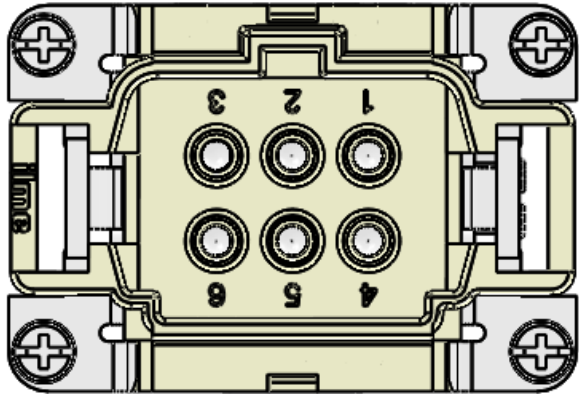
B

B

A

A

REVISIONS			
REV.	DESCRIPTION	DATE	APPROVED
A	DRAWN IN SW	2/21/2013	DCT



Connection made via spring clamp.

To use: Strip Wires 0.35" - 0.43" (9 - 11mm)
Placed stripped wire into opening and
press down on orange tab. This will lock the wire
into place. Proceed to next terminal.
(ferruled wires may be used as well)

Acceptable wire AWG: 14 - 24AWG [2.5 - 0.14 sqmm]

MATERIALS	
HOUSING:	GLASS REINFORCED THERMOPLASTIC
CONTACTS:	NICKEL PLATED BRASS HARDWARE
SCREWS:	SILVER PLATED COPPER ALLOY
	NICKEL PLATED STEEL
RATINGS:	UL / CSA - 600V, 16A. EN 250V/4kV/3, 10A
TEMP:	-40°C - +125°C ambient
APPROVALS:	UL, CSA, & CCC

PROPRIETARY AND CONFIDENTIAL
THE INFORMATION CONTAINED IN THIS
DRAWING IS THE SOLE PROPERTY OF
MENCOM CORPORATION. ANY
REPRODUCTION IN PART OR AS A WHOLE
WITHOUT THE WRITTEN PERMISSION OF
MENCOM CORPORATION IS
PROHIBITED.

		UNLESS OTHERWISE SPECIFIED: DIMENSIONS ARE IN INCHES TOLERANCES: FRACTIONAL ±1/64 ANGULAR: MACH±5° BEND ±5° TWO PLACE DECIMAL ±.01 THREE PLACE DECIMAL ±.004		NAME	MENCOM CORPORATION		
			DRAWN	JJH			
			CHECKED				
			ENG APPR.				
			MFG APPR.				
			Q.A.				
			COMMENTS:		SIZE DWG. NO. REV B CSHM-06 A		
		MATERIAL					
		FINISH					
		DO NOT SCALE DRAWING			SCALE: 3:2	WEIGHT:	SHEET 1 OF 1