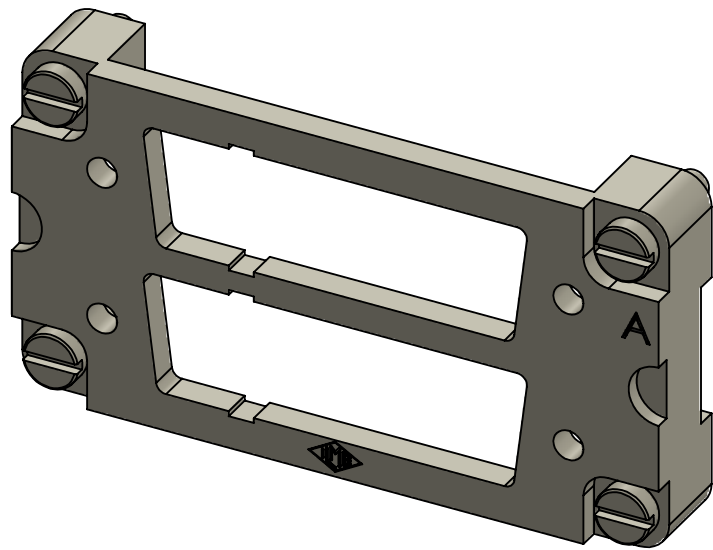
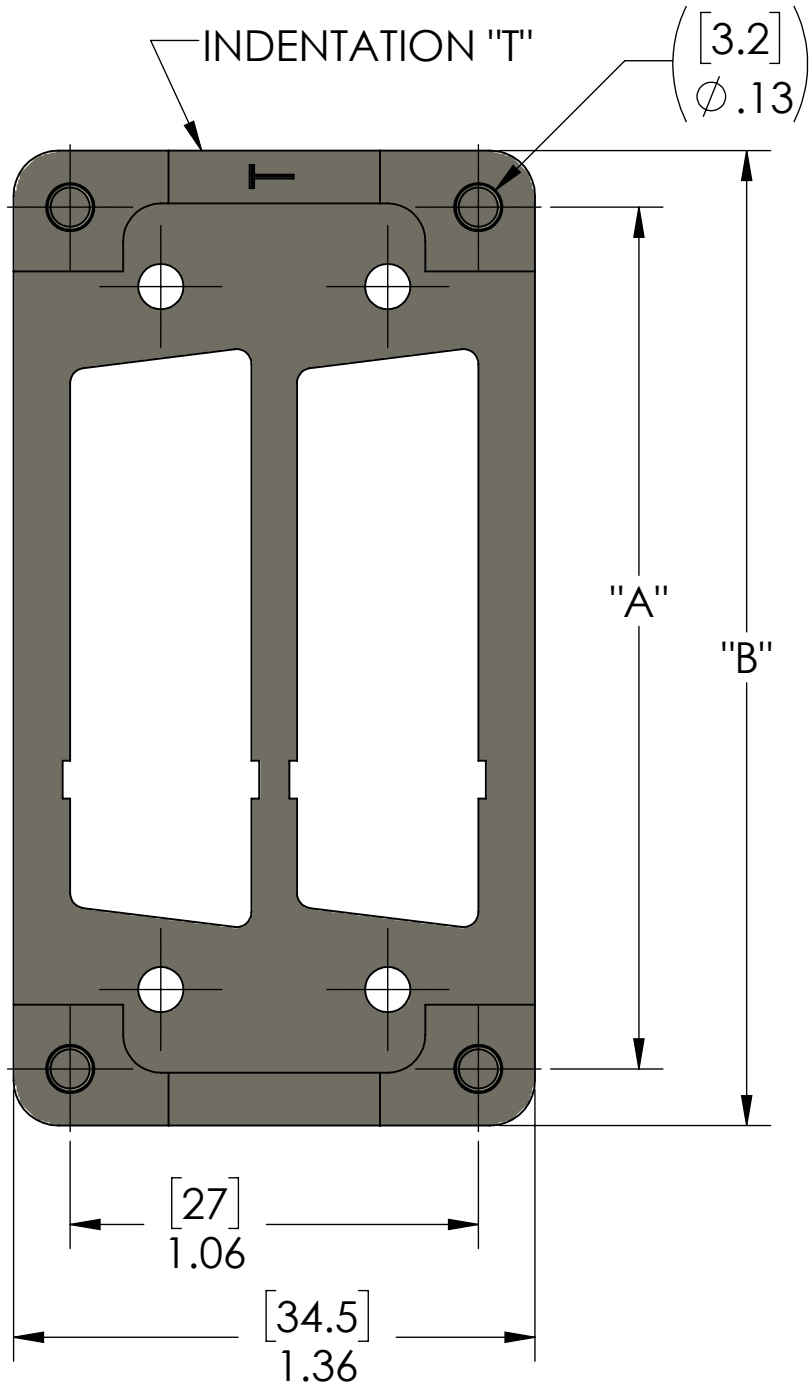
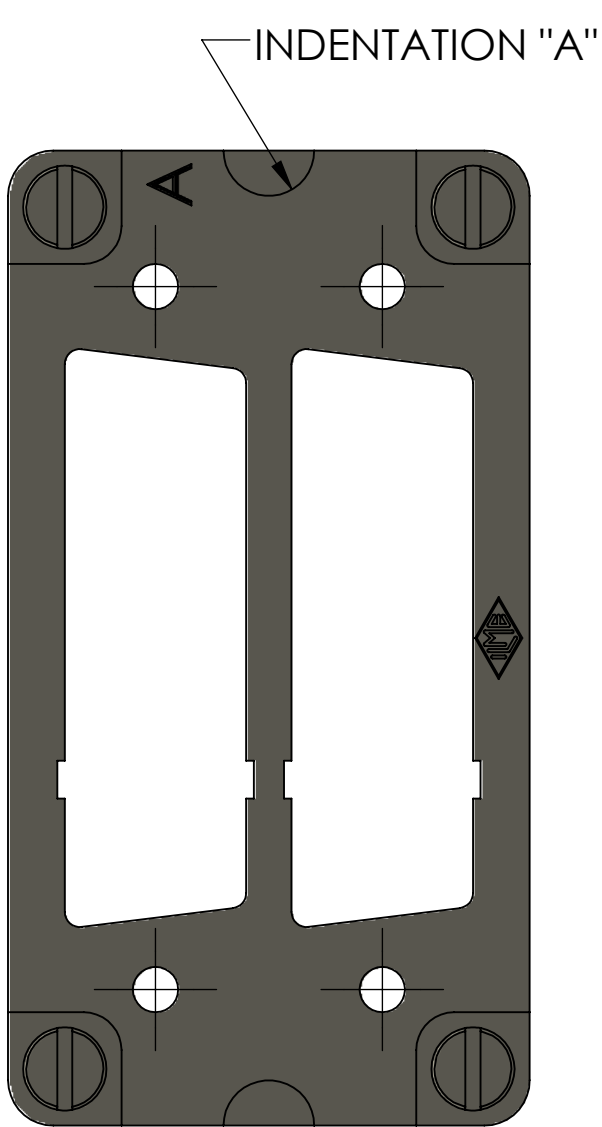


WHEN MOUNTING IN BULKHEAD HOUSINGS
D-SUB CONNECTORS MUST BE
MOUNTED ON THE SIDE MARKED
WITH THE LETTER "A"

WHEN MOUNTING ON HOODS
D-SUB CONNECTORS MUST BE
MOUNTED ON THE SIDE MARKED
WITH THE LETTER "T"



USE M3 PASSING SCREWS TIGHTENED
WITH A NUT AND WASHER (NOT INCL.)
VERIFY CONNECTION CONTINUITY OF
COUPLED CONNECTORS

PART NUMBER	D-SUB POLES (NOT INCL.)	FOR ENCLOSURE SIZE	A	B
CR-09AD2	9 POLE	44.27	44	51,5
CR-15AD2	15 POLE	44.27	44	51,5
CR-25AD2	25 POLE	57.27	57	64,5
CR-37AD2	37 POLE	77.27	77,5	85
CR-50AD2	50 POLE	77.27	77,5	85

UNLESS OTHERWISE SPECIFIED: DIMENSIONS ARE IN INCHES AND [MM]	DRAWN BY	DCG	MENCOM CORPORATION		
	DRAWN DATE	09/22/2017			
	CHECKED BY	ADM			
	CHECK DATE	09/22/2017			
				TITLE: 2 D-SUB PLATE FOR CH/CA & MH/MA/MF ENCL	
	COMMENTS:		SIZE DWG. NO. REV B CR-ZZAD2 A		
MATERIAL					
FINISH					
DO NOT SCALE DRAWING			SCALE: 2:1	WEIGHT:	SHEET 1 OF 1

PROPRIETARY AND CONFIDENTIAL
THE INFORMATION CONTAINED IN THIS
DRAWING IS THE SOLE PROPERTY OF
MENCOM CORPORATION. ANY
REPRODUCTION IN PART OR AS A WHOLE
WITHOUT THE WRITTEN PERMISSION OF
MENCOM CORPORATION IS
PROHIBITED.