

CG and MG high protection IP68 version (bayonet locking)

inserts		page:
CD	64 poles + ⊕	72
CDD	108 poles + ⊕	81
CDS	42 poles + ⊕	-
CDSH	42 poles + ⊕	89
CNE	24 poles + ⊕	113
CSE	24 poles + ⊕	-
CSH	24 poles + ⊕	113
CSH S	24 poles + ⊕	125
CCE	24 poles + ⊕	133
CMSH	10+2 (aux) poles + ⊕	140
CMCE	10+2 (aux) poles + ⊕	141
CSS	24 poles + ⊕	151
CQE	46 poles + ⊕	171
CQEE	64 poles + ⊕	177
CX	4/8 and 6/6 poles + ⊕	204, 206
MIXO	6 modules	262 - 317

hoods

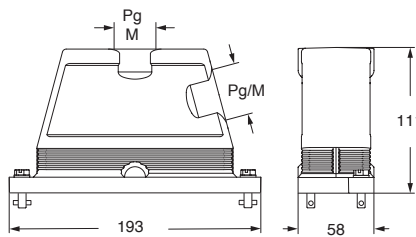


covers

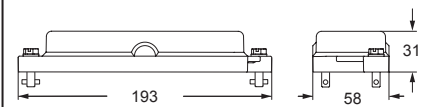


description	part No.	entry Pg	part No.	entry M	part No.
with side entry					
size "104.27"	CGO 24.21 B	21	MGO 24.32 B	32	
size "104.27"	CGO 24.29 B	29	MGO 24.40 B	40	
size "104.27"	CGO 24.36 B	36	MGO 24.50 B	50	
with top entry					
size "104.27"			MGV 24.325 B	25 x 3	
size "104.27"	CGV 24.21 B	21	MGV 24.32 B	32	
size "104.27"			MGV 24.232 B	32 x 2	
size "104.27"	CGV 24.29 B	29	MGV 24.40 B	40	
size "104.27"	CGV 24.229 B	29 x 2	MGV 24.240 B	40 x 2	
size "104.27"	CGV 24.36 B	36	MGV 24.50 B	50	
size "104.27"					CGC 24 B

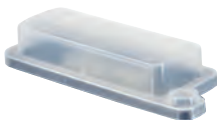
CGO/MGO B and CGV/MGV B



CGC B



CGCP MB
Dust protection cover
(from page 697)



CUUS Type 4/4X/12



according to IEC/EN 60529