

CG and MG high protection IP68 version (screw locking)

inserts		page:
CD	64 poles + ⊕	72
CDD	108 poles + ⊕	81
CDS	42 poles + ⊕	-
CDSH	42 poles + ⊕	89
CNE	24 poles + ⊕	113
CSE	24 poles + ⊕	-
CSH	24 poles + ⊕	113
CSH S	24 poles + ⊕	125
CCE	24 poles + ⊕	133
CMSH	10+2 (aux) poles + ⊕	140
CMCE	10+2 (aux) poles + ⊕	141
CSS	24 poles + ⊕	151
CQE	46 poles + ⊕	171
CQEE	64 poles + ⊕	177
CX	4/8 and 6/6 poles + ⊕	204, 206
MIXO	6 modules	262 - 317

hoods

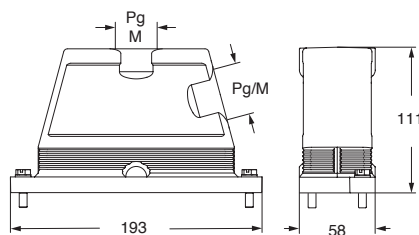


covers

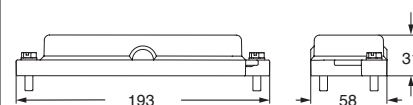


description	part No.	entry Pg	part No	entry M	part No.
with side entry					
size "104.27"	CGO 24.21	21	MGO 24.32	32	
size "104.27"	CGO 24.29	29	MGO 24.40	40	
size "104.27"	CGO 24.36	36	MGO 24.50	50	
with top entry					
size "104.27"			MGV 24.325	25 x 3	
size "104.27"	CGV 24.21	21	MGV 24.32	32	
size "104.27"			MGV 24.232	32 x 2	
size "104.27"	CGV 24.29	29	MGV 24.40	40	
size "104.27"	CGV 24.229	29 x 2	MGV 24.240	40 x 2	
size "104.27"	CGV 24.36	36	MGV 24.50	50	
size "104.27"					CGC 24

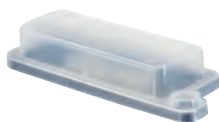
CGO/MGO and CGV/MGV



CGC



CGCP MB
Dust protection cover
(from page 697)



CUUS Type 4/4X/12



according to IEC/EN 60529