

CG and MG high protection IP68 version (screw locking)

| inserts | | page: |
|------------|-------------------------------|-----------|
| CD | 40 poles + ⊕ | 70 |
| CDD | 72 poles + ⊕ | 79 |
| CDS | 27 poles + ⊕ | - |
| CDSH | 27 poles + ⊕ | 88 |
| CNE | 16 poles + ⊕ | 112 |
| CSE | 16 poles + ⊕ | - |
| CSH | 16 poles + ⊕ | 112 |
| CSH S | 16 poles + ⊕ | 124 |
| CCE | 16 poles + ⊕ | 132 |
| CMSH, CMCE | 6+2 (aux) poles + ⊕ | 138 - 139 |
| CSS | 16 poles + ⊕ | 150 |
| CQE | 32 poles + ⊕ | 170 |
| CQEE | 40 poles + ⊕ | 176 |
| CP | 6 poles + ⊕ | 178 |
| CX | 6/12, 6/36 and 12/2 poles + ⊕ | 197 - 199 |
| CX | 4/0 and 4/2 poles + ⊕ | 200 - 201 |
| MIXO | 4 modules | 262 - 317 |

hoods



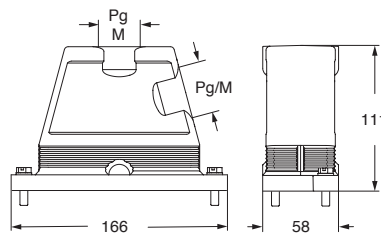
covers



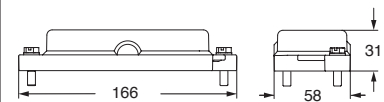
| description | part No. | entry Pg | part No | entry M | part No. |
|-----------------|-------------------|----------|-------------------|---------|----------|
| with side entry | | | | | |
| size "77.27" | CGO 16.21 | 21 | MGO 16.32 | 32 | |
| size "77.27" | CGO 16.29 | 29 | MGO 16.40 | 40 | |
| size "77.27" | CGO 16.36 | 36 | MGO 16.50 | 50 | |
| with top entry | | | | | |
| size "77.27" | | | MGV 16.25 | 25 | |
| size "77.27" | | | MGV 16.225 | 25 x 2 | |
| size "77.27" | CGV 16.21 | 21 | MGV 16.32 | 32 | |
| size "77.27" | CGV 16.221 | 21 x 2 | | | |
| size "77.27" | CGV 16.29 | 29 | MGV 16.40 | 40 | |
| size "77.27" | CGV 16.36 | 36 | MGV 16.50 | 50 | |

CGC 16

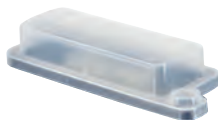
CGO/MGO and CGV/MGV



CGC



CGCP MB
Dust protection cover
(from page 697)



CUUS® Type 4/4X/12



according to IEC/EN 60529