

# X20(c)BC0083

## 1 General information

The bus controller makes it possible to connect X2X Link I/O nodes to POWERLINK. It is also possible to operate the X2X Link cycle synchronously 1:1 or synchronous to POWERLINK using a prescaler.

POWERLINK is a standard protocol for Fast Ethernet with hard real-time characteristics. The POWERLINK Standardization Group (EPG) ensures that the standard remains open and is continually developed: [www.ethernet-powerlink.org](http://www.ethernet-powerlink.org).

- POWERLINK
- I/O configuration and firmware update via the fieldbus
- Integrated hub for economical wiring

### 1.1 Coated modules

Coated modules are X20 modules with a protective coating for the electronics component. This coating protects X20c modules from condensation and corrosive gases.

The modules' electronics are fully compatible with the corresponding X20 modules.

**For simplification purposes, only images and module IDs of uncoated modules are used in this data sheet.**

The coating has been certified according to the following standards:

- Condensation: BMW GS 95011-4, 2x 1 cycle
- Corrosive gas: EN 60068-2-60, method 4, exposure 21 days



#### 1.1.1 Starting temperature

The starting temperature describes the minimum permissible ambient temperature in a voltage-free state at the time the coated module is switched on. This is permitted to be as low as -40°C. During operation, the conditions as specified in the technical data continue to apply.

#### Information:

**It is important to absolutely ensure that there is no forced cooling by air currents in the closed control cabinet, e.g. due to the use of a fan or ventilation slots.**

### 1.2 Other applicable documents

For additional and supplementary information, see the following documents.

#### Other applicable documents

Document name	Title
MAX20	<a href="#">X20 system user's manual</a>
MAEMV	<a href="#">Installation / EMC guide</a>

## 2 Order data


Order number	Short description	Figure
	<b>Bus controllers</b>	
X20BC0083	X20 bus controller, 1 POWERLINK interface, integrated 2-port hub, 2x RJ45, order bus base, power supply module and terminal block separately!	
X20cBC0083	X20 bus controller, coated, 1 POWERLINK interface, integrated 2-port hub, 2x RJ45, order bus base, power supply module and terminal block separately!	
	<b>Required accessories</b>	
	<b>System modules for bus controllers</b>	
X20BB80	X20 bus base, for X20 base module (BC, HB, etc.) and X20 power supply module, X20 end cover plates (left and right) X20AC0SL1/X20AC0SR1 included	
X20PS9400	X20 power supply module, for bus controller and internal I/O power supply X2X Link power supply	
X20PS9402	X20 power supply module, for bus controller and internal I/O power supply, X2X Link supply, supply not galvanically isolated	
X20cBB80	X20 bus base, coated, for X20 base module (BC, HB, etc.) and X20 power supply module, X20 end cover plates (left and right) X20AC0SL1/X20AC0SR1 included	
X20cPS9400	X20 power supply module, coated, for bus controller and internal I/O power supply X2X Link power supply	
	<b>Terminal blocks</b>	
X20TB12	X20 terminal block, 12-pin, 24 VDC keyed	

Table 1: X20BC0083, X20cBC0083 - Order data

## 3 Technical description

### 3.1 Technical data

Order number	X20BC0083	X20cBC0083
Short description		
Bus controller	POWERLINK (V1/V2) controlled node	
General information		
B&R ID code	0x1F1E	0xE216
Status indicators	Module status, bus function	
Diagnostics		
Module status	Yes, using LED status indicator and software	
Bus function	Yes, using LED status indicator and software	
Power consumption		
Bus	2 W	
Additional power dissipation caused by actuators (resistive) [W]	-	
Certifications		
CE	Yes	
UKCA	Yes	
ATEX	Zone 2, II 3G Ex nA nC IIA T5 Gc IP20, Ta (see X20 user's manual) FTZÚ 09 ATEX 0083X	
UL	cULus E115267 Industrial control equipment	
HazLoc	cCSAus 244665 Process control equipment for hazardous locations Class I, Division 2, Groups ABCD, T5	
DNV	Temperature: <b>B</b> (0 - 55°C) Humidity: <b>B</b> (up to 100%) Vibration: <b>B</b> (4 g) EMC: <b>B</b> (bridge and open deck)	
LR	ENV1	
KR	Yes	
ABS	Yes	
EAC	Yes	
KC	Yes	-
Interfaces		
Fieldbus	POWERLINK (V1/V2) controlled node	
Type	Type 2 <sup>1)</sup>	
Variant	2x shielded RJ45 (hub)	
Line length	Max. 100 m between 2 stations (segment length)	
Transfer rate	100 Mbit/s	

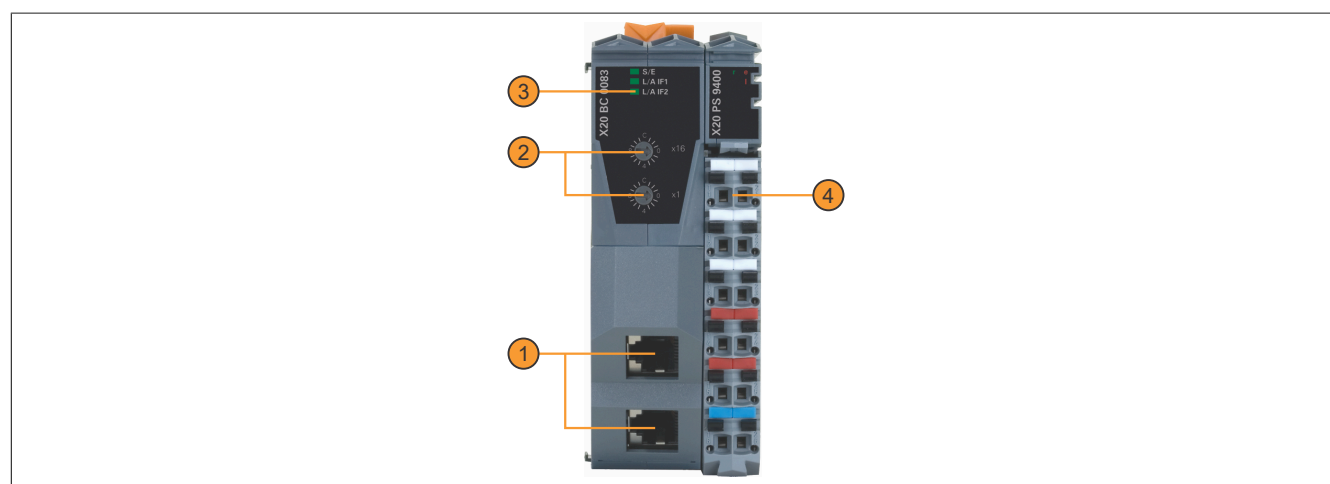
Table 2: X20BC0083, X20cBC0083 - Technical data

Order number	X20BC0083	X20cBC0083
Transfer		
Physical layer	100BASE-TX	
Half-duplex	Yes	
Full-duplex	No	
Autonegotiation	Yes	
Auto-MDI/MDIX	Yes	
Hub propagation delay	0.96 to 1 μs	
Min. cycle time <sup>2)</sup>		
Fieldbus	200 μs	
X2X Link	200 μs	
Synchronization between bus systems possible	Yes	
Electrical properties		
Electrical isolation	POWERLINK isolated from bus and I/O	
Operating conditions		
Mounting orientation		
Horizontal	Yes	
Vertical	Yes	
Installation elevation above sea level		
0 to 2000 m	No limitation	
>2000 m	Reduction of ambient temperature by 0.5°C per 100 m	
Degree of protection per EN 60529	IP20	
Ambient conditions		
Temperature		
Operation		
Horizontal mounting orientation	-25 to 60°C	
Vertical mounting orientation	-25 to 50°C	
Derating	-	
Starting temperature	-	Yes, -40°C
Storage	-40 to 85°C	
Transport	-40 to 85°C	
Relative humidity		
Operation	5 to 95%, non-condensing	Up to 100%, condensing
Storage	5 to 95%, non-condensing	
Transport	5 to 95%, non-condensing	
Mechanical properties		
Note	Order 1x terminal block X20TB12 separately. Order 1x power supply module X20PS9400 or X20PS9402 separately. Order 1x bus base X20BB80 separately.	Order 1x terminal block X20TB12 separately. Order 1x power supply module X20cPS9400 separately. Order 1x bus base X20cBB80 separately.
Pitch <sup>3)</sup>	37.5 <sup>+0.2</sup> mm	

Table 2: X20BC0083, X20cBC0083 - Technical data

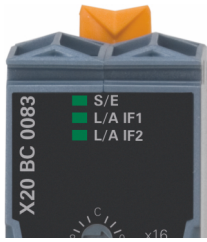
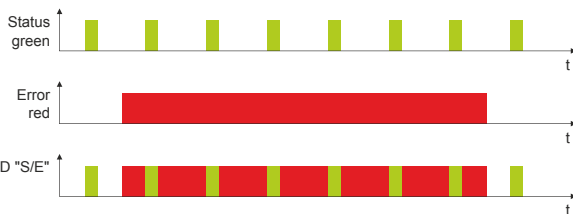
- For additional information, see section "Communication / POWERLINK / General information / Hardware - CN" in Automation Help.
- The minimum cycle time specifies how far the bus cycle can be reduced without communication errors occurring.
- Pitch is based on the width of bus base X20BB80. In addition, power supply module X20PS9400 or X20PS9402 is always required for the bus controller.

### 3.2 Operating and connection elements



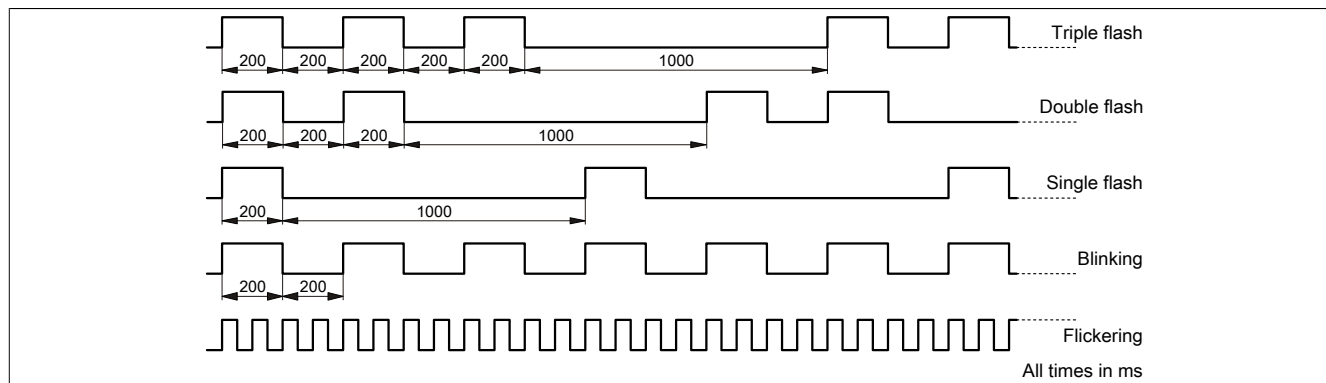
1	POWERLINK connection with 2x RJ45 for simple wiring	2	Node number switches
3	LED status indicators	4	Terminal block for bus controller and I/O supply

## 3.2.1 LED status indicators

Figure	LED	Color	Status	Description
	S/E <sup>1)</sup>	Green	Off	No power supply or mode NOT_ACTIVE. The controlled node (CN) is either not supplied with power or it is in state NOT_ACTIVE. The CN waits in this state for about 5 s after a restart. Communication is not possible with the CN. If no POWERLINK communication is detected during these 5 s, the CN changes to state BASIC_ETHERNET (flickering). If POWERLINK communication is detected before this time expires, however, the CN immediately changes to state PRE_OPERATIONAL_1.
			Flickering	Mode BASIC_ETHERNET. The CN has not detected any POWERLINK communication. In this state, it is possible to communicate directly with the CN (e.g. with UDP, IP). If POWERLINK communication is detected in this state, the CN changes to state PRE_OPERATIONAL_1.
			Single flash	Mode PRE_OPERATIONAL_1. When operating on a POWERLINK V1 manager, the CN immediately changes to state PRE_OPERATIONAL_2. When operating on a POWERLINK V2 manager, the CN waits until an SoC frame is received and then changes to state PRE_OPERATIONAL_2.
			Double flash	Mode PRE_OPERATIONAL_2. The CN is normally configured by the manager in this state. It is then switched to state READY_TO_OPERATE by command (POWERLINK V2) or by setting flag "Data valid" in the output data (POWERLINK V1).
			Triple flash	Mode READY_TO_OPERATE. In a POWERLINK V1 network, the CN switches to state OPERATIONAL automatically as soon as input data is present. In a POWERLINK V2 network, the manager switches to state OPERATIONAL by command.
			On	Mode OPERATIONAL. PDO mapping is active, and cyclic data is evaluated.
			Blinking	Mode STOPPED. Output data is not being output, and no input data is being provided. It is only possible to switch to or leave this state after the manager has given the appropriate command.
	L/A IFx	Red	On	The controlled node (CN) is in an error state (failed Ethernet frames, increased number of collisions on the network, etc.). If an error occurs in the following states, the red LED is superimposed by the green flashing LED: <ul style="list-style-type: none"> <li>• PRE_OPERATIONAL_1</li> <li>• PRE_OPERATIONAL_2</li> <li>• READY_TO_OPERATE</li> </ul>  <p>Note:</p> <ul style="list-style-type: none"> <li>• Several red blinking signals are displayed immediately after the device is switched on. This is not an error, however.</li> <li>• The LED is lit red for CNs with configured physical node number 0 but that have not yet been assigned a node number via dynamic node allocation (DNA).</li> </ul>
			On	The link to the remote station is established.
			Blinking	The link to the remote station is established, and Ethernet activity is taking place on the bus.

1) The Status/Error LED "S/E" is a green/red dual LED.

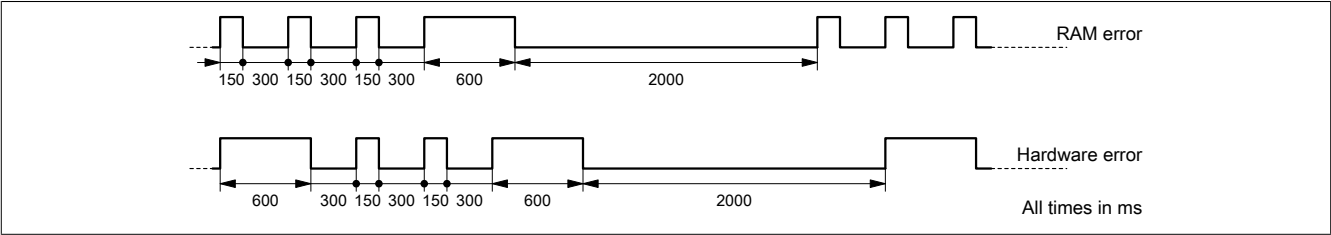
## LED status indicators - Blink times



System stop error codes

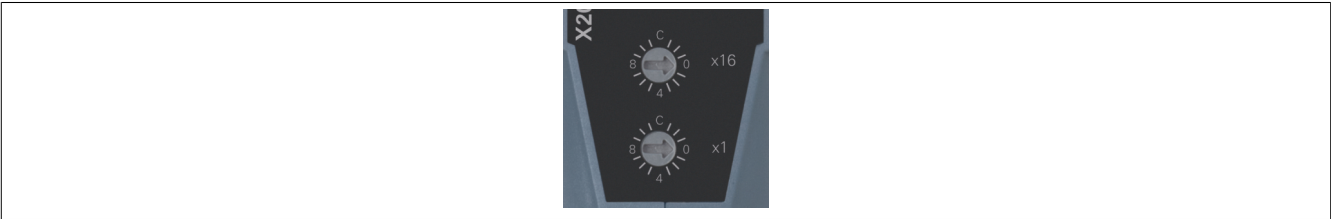
A system stop error can occur due to incorrect configuration or defective hardware.

The error code is indicated by LED "S/E" blinking red. The blinking signal of the error code consists of 4 switch-on phases with short (150 ms) or long (600 ms) duration. The error code is repeated every 2 seconds.



Error	Error description
RAM error	The device is defective and must be replaced.
Hardware error	The device or a system component is defective and must be replaced.

3.2.2 POWERLINK node number

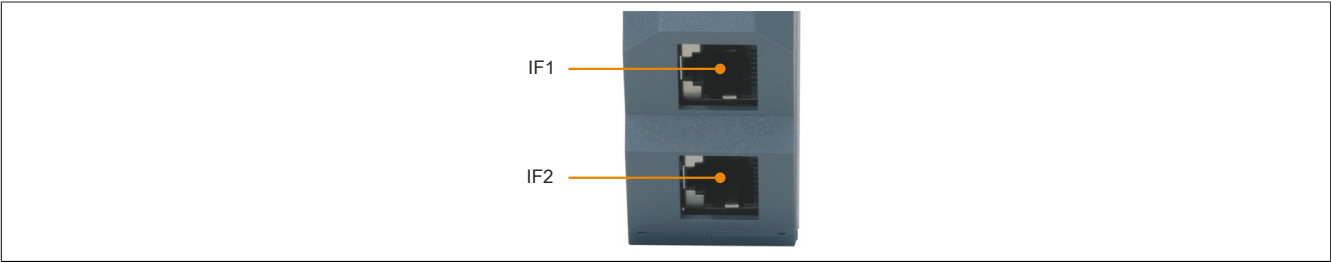


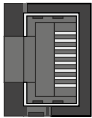
The node number for the POWERLINK node is set using the two number switches.

Switch position	Description
0x00	Only permitted when operating the POWERLINK node in DNA mode.
0x01 - 0xEF	Node number of the POWERLINK node. Operation as a controlled node (CN).
0xF0 - 0xFF	Reserved, switch position not permitted.

3.2.3 Ethernet interface

For information about wiring X20 modules with an Ethernet interface, see section "Mechanical and electrical configuration - Wiring guidelines for X20 modules with Ethernet cables" in the X20 user's manual.



Interface	Pinout	
	Pin	Ethernet
 Shielded RJ45	1	RXD
	2	RXD\
	3	TXD
	4	Termination
	5	Termination
	6	TXD\
	7	Termination
	8	Termination

### 3.3 Dynamic node allocation (DNA)

Most POWERLINK bus controllers have the ability to dynamically assign node numbers. This has the following advantages:

- No setting of the node number switch
- Easier installation
- Reduced error sources

For information regarding configuration as well as an example, see Automation Help → Communication → POWERLINK → General information → Dynamic node allocation (DNA)

### 3.4 SG3

This module is not supported on SG3 target systems.

### 3.5 SG4

The module comes with preinstalled firmware. The firmware is also part of the Automation Runtime operating system for the PLC. With different versions, the Automation Runtime firmware is loaded onto the module.

The latest firmware is made available automatically when updating Automation Runtime.