

CG and MG high protection IP68 version (screw locking)

inserts		page:
CDD	42 poles + ⊕	78
CDS	18 poles + ⊕	-
CDSH	18 poles + ⊕	87
CNE	10 poles + ⊕	111
CSE	10 poles + ⊕	-
CSH	10 poles + ⊕	111
CSH S	10 poles + ⊕	123
CCE	10 poles + ⊕	131
CMSH	3+2 (aux) poles + ⊕	136
CMCE	3+2 (aux) poles + ⊕	137
CSS	10 poles + ⊕	149
CQE	18 poles + ⊕	169
CX	8/24 poles + ⊕	194
MIXO	3 modules	262 - 317

hoods



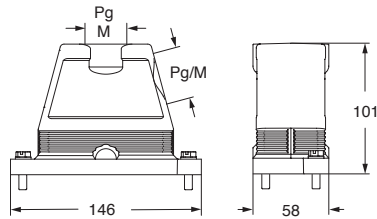
covers



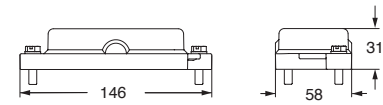
description	part No.	entry Pg	part No	entry M	part No.
with side entry					
size "57.27"	CGO 10.16	16	MGO 10.25	25	
size "57.27"	CGO 10.21	21	MGO 10.32	32	
size "57.27"	CGO 10.29	29			
with top entry					
size "57.27"	CGV 10.16	16	MGV 10.25	25	
size "57.27"	CGV 10.21	21	MGV 10.32	32	
size "57.27"	CGV 10.29	29	MGV 10.40	40	

CGC 10

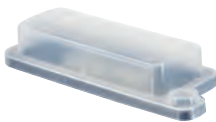
CGO/MGO and CGV/MGV



CGC



CGCP MB
Dust protection cover
(from page 697)



CUUS® Type 4/4X/12



according to IEC/EN 60529