

Product data sheet

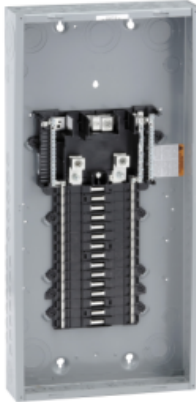
Characteristics

QO130L200PG

Load center, QO, 1 phase, 30 spaces, 30 circuits, 200A convertible main lugs, PoN, NEMA1, gnd bar, UL



Price* : 644.76 USD



Main

Marketing Trade Name	QO
Product Type	Load Center
Cover Type	Order separately

Complementary

Tightening Torque	Main lugs 250 lb.in, AWG 4...250 kcmil, aluminium/copper Main lugs 250 lb.in, AWG 4...300 kcmil, aluminium/copper Cover 20 lb.in
Load Center Type	Main lugs
Rated Current	200 A
Number of Spaces	30
Max Short Circuit Current Rating	65 kA
Maximum Number of Single Pole Circuits	40
Maximum Number of Tandem Breakers	10
Number of Phases	1 phase
Voltage Rating	120/240 V AC
Wire Size	AWG 6...250 kcmil aluminium/copper
Ground Bar	Grounding bar included (not installed)
Electrical Connection	Lugs
Wiring Configuration	3-wire
Busbar Material	Tin plated copper busbar
Enclosure Material	Welded sheet steel
Surface Finish	Baked enamel Gray

* Price is "List Price" and may be subject to a trade discount – check with your local distributor or retailer for actual price.

Box Number	9
Height	29.84 in (758 mm)
Width	14.25 in (362 mm)

Environment

Enclosure Rating	NEMA 1 indoor
Ambient Air Temperature for Operation	23 °F (-5 °C) 104 °F (40 °C)
Product Certifications	UL Listed

Ordering and shipping details

Category	10003 - QO PON 1PH LC,12-60 CKT, ML N1
Discount Schedule	DE3A
GTIN	00785901219248
Nbr. of units in pkg.	1
Package weight(Lbs)	1 lb(US) (0.45 kg)
Returnability	Yes
Country of origin	US

Packing Units

Unit Type of Package 1	PCE
Package 1 Height	4.20 in (10.668 cm)
Package 1 width	14.80 in (37.592 cm)
Package 1 Length	31.00 in (78.74 cm)
Unit Type of Package 2	PAL
Number of Units in Package 2	27
Package 2 Weight	485.00 lb(US) (219.992 kg)
Package 2 Height	42.20 in (107.188 cm)
Package 2 width	40.00 in (101.6 cm)
Package 2 Length	48.00 in (121.92 cm)

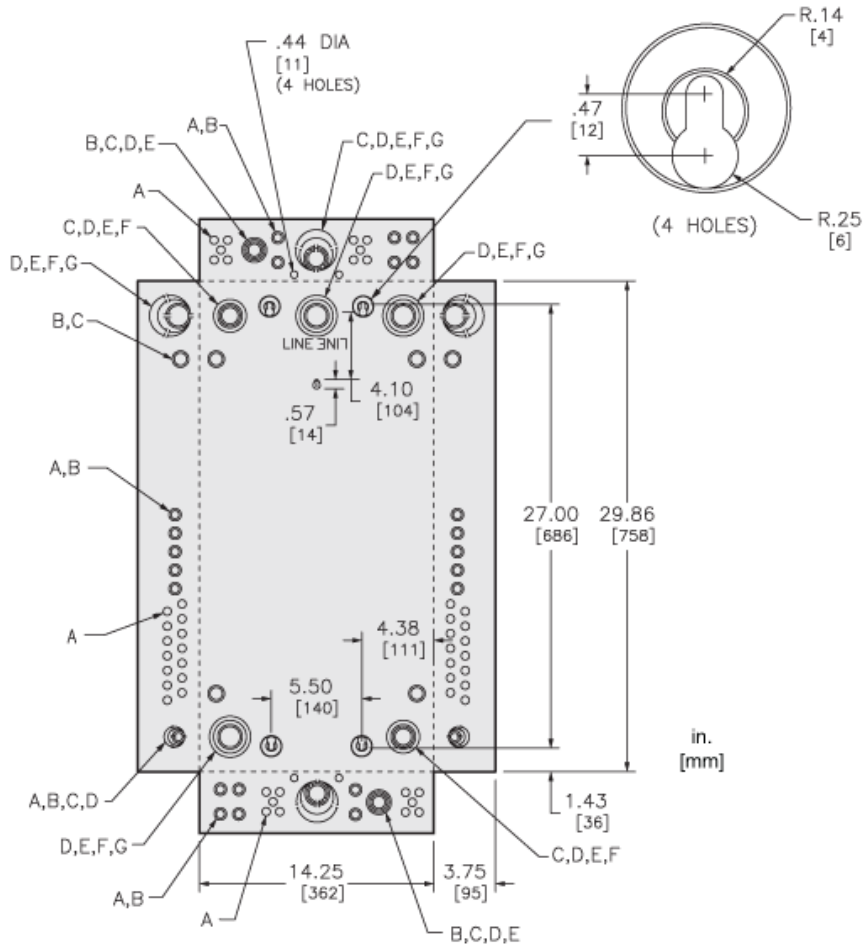
Offer Sustainability

California proposition 65	WARNING: This product can expose you to chemicals including: Lead and lead compounds, which is known to the State of California to cause cancer and birth defects or other reproductive harm. For more information go to www.P65Warnings.ca.gov
REACH Regulation	REACH Declaration
REACH free of SVHC	Yes
EU RoHS Directive	Compliant EU RoHS Declaration
Toxic heavy metal free	Yes
Mercury free	Yes
RoHS exemption information	Yes
China RoHS Regulation	China RoHS declaration Pro-active China RoHS declaration (out of China RoHS legal scope)

Contractual warranty

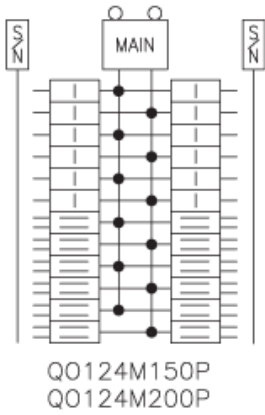
Warranty	18 months
----------	-----------

Approximate Dimensions

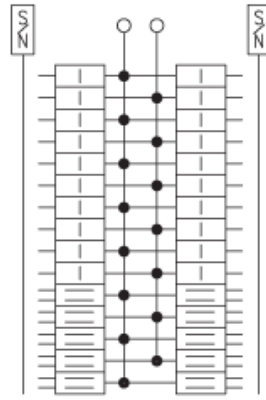


KNOCKOUTS							
SYMBOL	A	B	C	D	E	F	G
IN	.50	.75	1.00	1.25	1.50	2.00	2.50
MM	13	19	25	32	38	51	64

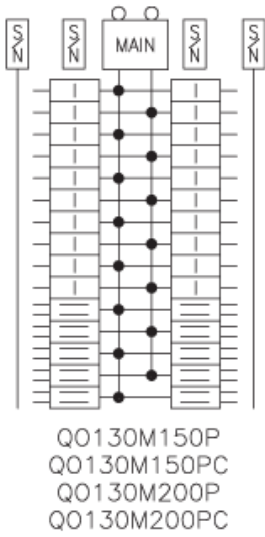
Connections and Wiring Diagrams



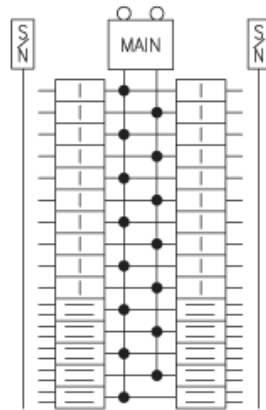
QO124M150P
QO124M200P



QO130L200PG
QO130L200PGC



QO130M150P
QO130M150PC
QO130M200P
QO130M200PC



QO130M200PTT