

Product data sheet

Characteristics

SC816F200PS

Meter mains, Homeline, CSED, ringed socket, 200A, surface mount, 8 spaces, 16 circuits, no bypass, solar ready

Product availability : Stock - Normally stocked in distribution facility



Price* : 1,187.00 USD



Main

Product or component type	Meter Mains
Range of product	Homeline
Includes	Circuit breaker 1) 2P 200 A 120/240 V AC main supply ready assembled

Complementary

Line Rated Current	200 A
Short-circuit current	22 kA
Network number of phases	1
Meter socket type	Ringed
Mounting	Surface
Number of spaces	8
Number of circuits	16
Number of Tandem Breakers	8
Hub type	A-L
Electrical connection	Lugs line side Lugs service ground Feed-thru lugs load side
Wire Size	AWG 4...250 kcmil aluminium/copper)line side AWG 6...250 kcmil aluminium/copper)load side AWG 14...AWG 2/0 aluminium/copper)service ground
Tightening torque	Main lugs 250 lb.in, AWG 4...250 kcmil, aluminium/copper Service ground 50 lb.in, AWG 14...AWG 2/0, copper Service ground 50 lb.in, AWG 12...AWG 2/0, aluminium Lugs 250 lb.in, AWG 6...250 kcmil, aluminium/copper Branch lugs 50 lb.in, AWG 14...AWG 2/0, copper Branch lugs 50 lb.in, AWG 12...AWG 2/0, aluminium Cover 10 lb.in

* Price is "List Price" and may be subject to a trade discount – check with your local distributor or retailer for actual price.

Jul 29, 2021

Disconnect	Service disconnect (factory installed)
Main Breaker Rating	200 A
Branch Breaker Rating	110 A
Service feed location	OH UG
Bypass type	No bypass
Height	30.26 in (768.60 mm)
Width	21.50 in (546.10 mm)
Depth	6.30 in (160.02 mm)

Environment

NEMA degree of protection	NEMA 3R
Product certifications	UL E-6294

Ordering and shipping details

Category	00148 - HOMELINE CSED DEVICES
Discount Schedule	DE3A
GTIN	00785901340492
Nbr. of units in pkg.	1
Package weight(Lbs)	53.87 lb(US) (24.44 kg)
Returnability	Yes

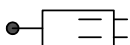
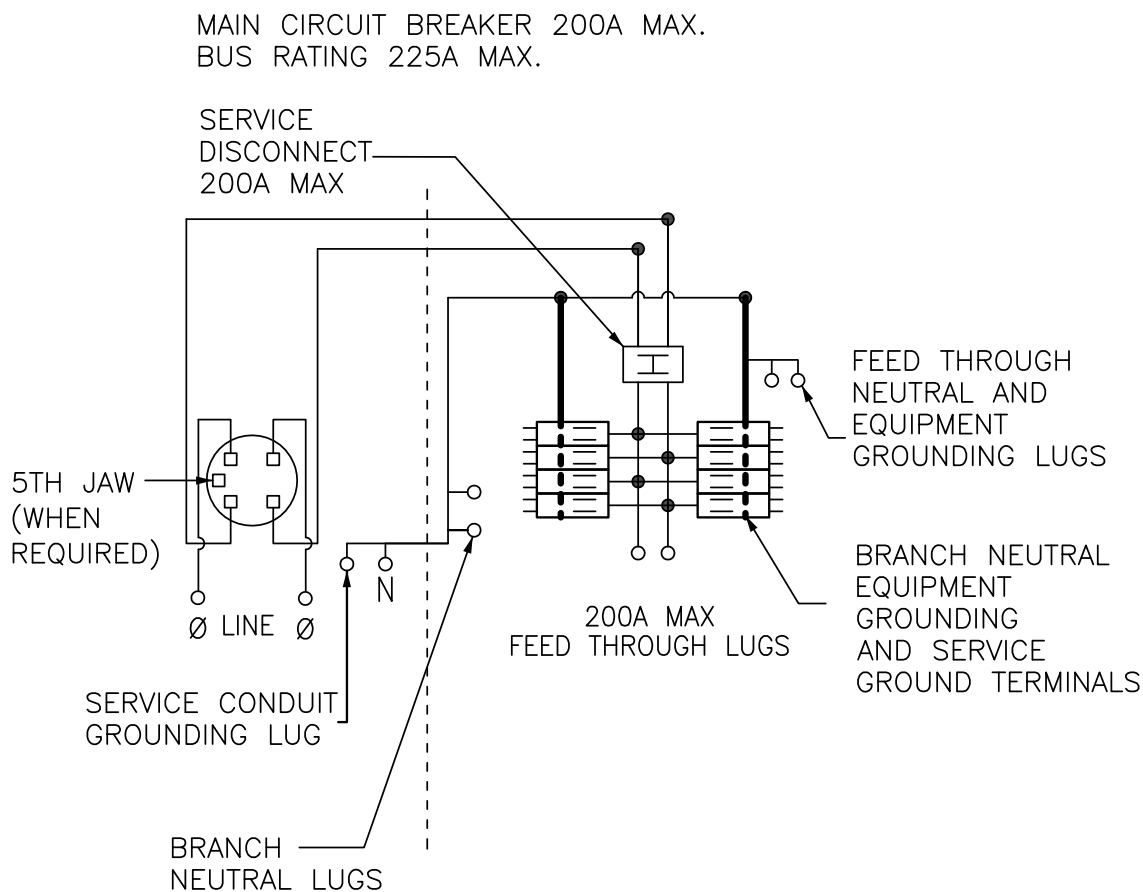
Packing Units

Unit Type of Package 1	PCE
Package 1 Height	7.70 in (19.558 cm)
Package 1 width	22.30 in (56.642 cm)
Package 1 Length	30.70 in (77.978 cm)
Unit Type of Package 2	PAL
Number of Units in Package 2	10
Package 2 Weight	551.00 lb(US) (249.929 kg)
Package 2 Height	41.30 in (104.902 cm)
Package 2 width	40.00 in (101.6 cm)
Package 2 Length	48.00 in (121.92 cm)

Offer Sustainability

California proposition 65	WARNING: This product can expose you to chemicals including: Lead and lead compounds, which is known to the State of California to cause cancer and birth defects or other reproductive harm. For more information go to www.P65Warnings.ca.gov
REACH Regulation	REACH Declaration
REACH free of SVHC	Yes
EU RoHS Directive	Compliant EU RoHS Declaration
Mercury free	Yes
RoHS exemption information	Yes
China RoHS Regulation	China RoHS declaration Product out of China RoHS scope. Substance declaration for your information.

Wiring Diagram



TWO SINGLE POLE, ONE PLUG-ON SPACE TYPE HOMT,
ONE SINGLE POLE TYPE HOM OR HOMP.
TWO POLE TYPE HOM, HOMA OR HOMET (15-110A) MAY
PLUG ON TWO ADJACENTS SPACES.
TWO POLE TYPE HOMA (150-200A) MAY PLUG ON
FOUR ADJACENT SPACES.

USE 15-110A AND 150-200A BRANCH BREAKERS ONLY.
TOTAL CIRCUIT BREAKER HANDLE RATING NOT TO EXCEED
170A PER BRANCH CIRCUIT CONNECTOR.

A SQUARE D UL LISTED SECONDARY SURGE ARRESTER MAY
PLUG ON TWO ADJACENT SPACES. ORDER CATALOG NO.
HOM2175SB