

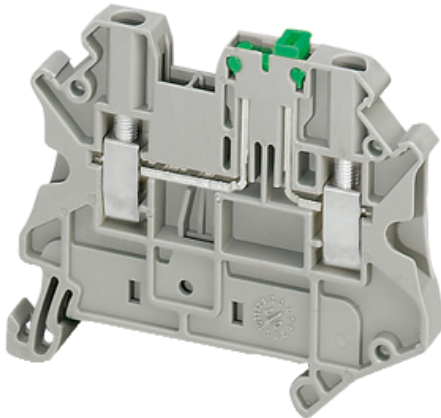
# NSYTRV22SC

## SCREW TERMINAL, KNIFE DISCONNECT, 2 POINTS, 2,5MM<sup>2</sup>, GREY

Product availability : Non-Stock - Not normally stocked in distribution facility



Price\* : 4.70 USD



### Main

Range	Linery
Product name	Linery TR
Product or component type	Terminal block
Device short name	TRV
Terminal block type	Blade disconnect
Terminal block level	1
Mounting mode	Clip-on
Nominal cross section	0.00 in <sup>2</sup> (2.5 mm <sup>2</sup> )
Length	2.28 in (57.8 mm)
Color	Gray
Quantity per set	Set of 50

### Complementary

Width	0.20 in (5.2 mm)
Height	1.93 in (49.1 mm)
Connections - terminals	1 x screw terminal upstream 1 x screw terminal downstream
Number of connections	2
Connection position	Sideways
Number of measurement input	2
Cable cross section	0.00...0.01 in <sup>2</sup> (0.14...4 mm <sup>2</sup> ), flexible without cable end 0.00...0.01 in <sup>2</sup> (0.14...4 mm <sup>2</sup> ), solid
Tightening torque	4.43...5.31 lbf.in (0.5...0.6 N.m)
Wire stripping length	0.35 in (9 mm)
Tool type	Connection screwdriver Disconnection screwdriver

\* Price is "List Price" and may be subject to a trade discount – check with your local distributor or retailer for actual price.

[Ue] rated operational voltage	500 V EN/IEC 60947-7-1 600 V CSA 600 V cURus
Line Rated Current	20 A EN/IEC 60947-7-1 16 A CSA 16 A cURus
Material	Polyamide 6/6: insulating case
Dielectric loss	0.01 at 1 MHz IEC 60250 0.01 at 1 MHz VDE 0303-T4
Dielectric constant	3.7 at 1 MHz
Resistivity	10000 M $\Omega$ .m IEC 60093 10000 M $\Omega$ .m VDE 0303-T30
Surface resistance	1000 G $\Omega$ IEC 60093 1000 G $\Omega$ VDE 0303-T30
Creep resistance	500 CTI (> 400 kV) conforming to IEC 60093 500 CTI (> 400 kV) conforming to VDE 0303-T30
Flame retardance	V0 0.03 in (0.8 mm) UL 94
Net Weight	0.42 oz (12 g)
Range compatibility	Prisma G Prisma P Prisma PH Prisma Pack Spacial Kaedra Pragma TeSys
Product compatibility	Spacial enclosures

## Environment

Product certifications	CSA CURus EAC
Dielectric strength	1000 V IEC 60243-1
Ambient air temperature for operation	-40...266 °F (-40...130 °C) IEC 60216-1 -40...266 °F (-40...130 °C) VDE 0304-T21

## Ordering and shipping details

Category	21715 - IEC TERMINAL BLOCKS-NSY,AM1,DF6,GK1
Discount Schedule	CP5
GTIN	03606480692512
Nbr. of units in pkg.	1
Package weight(Lbs)	0.35 oz (10 g)
Returnability	No
Country of origin	DE

## Packing Units

Unit Type of Package 1	PCE
Package 1 Height	2.17 in (5.5 cm)
Package 1 width	3.15 in (8 cm)
Package 1 Length	9.65 in (24.5 cm)
Unit Type of Package 2	BB1
Number of Units in Package 2	50
Package 2 Weight	18.34 oz (520 g)
Package 2 Height	2.17 in (5.5 cm)
Package 2 width	3.15 in (8 cm)
Package 2 Length	9.65 in (24.5 cm)
Unit Type of Package 3	S03

Number of Units in Package 3	700
Package 3 Weight	16.99 lb(US) (7.707 kg)
Package 3 Height	11.81 in (30 cm)
Package 3 width	11.81 in (30 cm)
Package 3 Length	15.75 in (40 cm)

### Offer Sustainability

Sustainable offer status	Green Premium product
California proposition 65	WARNING: This product can expose you to chemicals including: Lead and lead compounds, which is known to the State of California to cause cancer and birth defects or other reproductive harm. For more information go to <a href="http://www.P65Warnings.ca.gov">www.P65Warnings.ca.gov</a>
REACH Regulation	<a href="#">REACH Declaration</a>
EU RoHS Directive	Pro-active compliance (Product out of EU RoHS legal scope) <a href="#">EU RoHS Declaration</a>
Mercury free	Yes
RoHS exemption information	<a href="#">Yes</a>
China RoHS Regulation	<a href="#">China RoHS declaration</a> Product out of China RoHS scope. Substance declaration for your information.
Environmental Disclosure	<a href="#">Product Environmental Profile</a>