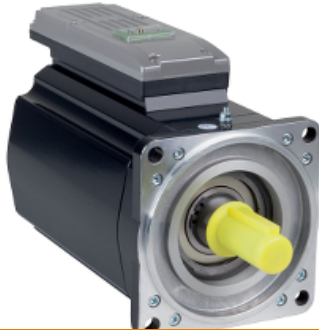




Price\* : 3,883.68 USD



### Commercial status

To be discontinued on: 31 March 2022

To be end-of-service on: 31 March 2025

⚠ To be discontinued

### Main

Range of product	PacDrive 3
Product or component type	Servo motor integrated drive
Device short name	ILM

### Complementary

[Us] rated supply voltage	250...700 V
Continuous stall current	4.7 A
Continuous stall torque	66.38 lbf.in (7.5 N.m)
Peak stall torque	238.97 lbf.in (27 N.m)
Nominal output power	1450 W
Nominal torque	40.71 lbf.in (4.6 N.m)
Nominal speed	3000 rpm
Maximum current Irms	18.8 A
Line Rated Current	2.9 A
Shaft end	Keyed
Second shaft	Without second shaft end
Shaft diameter	0.94 in (24 mm)
Shaft length	1.97 in (50 mm)
Key width	1.57 in (40 mm)
Feedback type	Absolute single turn SinCos Hiperface
Speed feedback resolution	128 periods
Holding brake	With
Holding torque	159.31 lbf.in (18 N.m) holding brake
Mounting support	International standard flange
Motor flange size	5.51 in (140 mm)
Torque constant	1.6 N.m/A 248 °F (120 °C)

\* Price is "List Price" and may be subject to a trade discount – check with your local distributor or retailer for actual price.

Back emf constant	108 V/krpm 68 °F (20 °C)
Number of motor poles	10
Rotor inertia	7.41 kg.cm <sup>2</sup>
Stator resistance	1.81 Ohm 68 °F (20 °C) Ph/Ph 1.26 Ohm 248 °F (120 °C) Ph/N
Stator inductance	19.1 mH 68 °F (20 °C) Ph/Ph 9.55 mH 248 °F (120 °C) Ph/N
Maximum radial force Fr	2210 N 1000 rpm 1760 N 2000 rpm 1530 N 3000 rpm
Maximum axial force Fa	0.2 x Fr
Type of cooling	Natural convection
Length	11.50 in (292 mm)
Number of motor stacks	1
Centring collar diameter	5.12 in (130 mm)
Centring collar depth	0.14 in (3.5 mm)
Number of mounting holes	4
Mounting holes diameter	0.43 in (11 mm)
Circle diameter of the mounting holes	6.50 in (165 mm)
Net Weight	30.42 lb(US) (13.8 kg)

## Environment

IP degree of protection	IP54
-------------------------	------

## Ordering and shipping details

Category	18351-PACDRIVE3 INTEGRATED DRIVES
Discount Schedule	PC52
GTIN	03606485294766
Nbr. of units in pkg.	1
Package weight(Lbs)	32.03 lb(US) (14.53 kg)
Returnability	No
Country of origin	DE

## Packing Units

Unit Type of Package 1	PCE
Package 1 Height	10.24 in (26 cm)
Package 1 width	7.87 in (20 cm)
Package 1 Length	23.23 in (59 cm)

## Offer Sustainability

Sustainable offer status	Green Premium product
California proposition 65	WARNING: This product can expose you to chemicals including: Lead and lead compounds, which is known to the State of California to cause cancer and birth defects or other reproductive harm. For more information go to <a href="http://www.P65Warnings.ca.gov">www.P65Warnings.ca.gov</a>
REACH Regulation	<a href="#">REACH Declaration</a>
REACH free of SVHC	Yes
EU RoHS Directive	Pro-active compliance (Product out of EU RoHS legal scope) <a href="#">EU RoHS Declaration</a>
Mercury free	Yes
RoHS exemption information	<a href="#">Yes</a>
China RoHS Regulation	<a href="#">China RoHS declaration</a>
Environmental Disclosure	<a href="#">Product Environmental Profile</a>
Circularity Profile	<a href="#">End of Life Information</a>

---

PVC free	Yes
----------	-----

---

### Contractual warranty

---

Warranty	18 months
----------	-----------

---