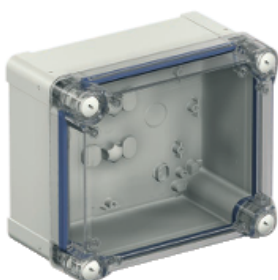




Price* : 70.86 USD



Main

Range	Thalassa
Product name	Thalassa TBP
Device application	Multi-purpose
Category	Industrial box
Height	9.49 in (241 mm)
Width	7.64 in (194 mm)
Depth	5.00 in (127 mm)
Internal height	8.86 in (225 mm)
Internal width	6.89 in (175 mm)
Internal depth	4.72 in (120 mm)
Enclosure mounting	Wall mounted
Device composition	1 body 1 cover 4 cover screw
Body type	One piece moulded
Type of front cover	High transparent cover
Cover fixing	Plastic screws
Lock type	Captive screw flat outside sealed area
Removable parts	Cover by captive screws

Complementary

Material	polycarbonate
Color	Gray RAL 7035) Transparent
Standards	UL 508 A IEC 62208

* Price is "List Price" and may be subject to a trade discount – check with your local distributor or retailer for actual price.

Product certifications	TÜV UL
Electrical insulation class	Class II
Mounting location	Outdoor
Net Weight	1.81 lb(US) (0.82 kg)

Environment

IP degree of protection	IP66 conforming to NEMA 4.4X
IK degree of protection	IK08 conforming to IEC 62262
Fire resistance	1760 °F (960 °C)
Ambient air temperature for storage	5...140 °F (-15...60 °C)
Operating temperature	-13...176 °F (-25...80 °C)

Ordering and shipping details

Category	80033 - ENCLOSURE SYSTEMS POLYESTER
Discount Schedule	ES1
GTIN	03606480165870
Nbr. of units in pkg.	1
Package weight(Lbs)	28.92 oz (820 g)
Returnability	No
Country of origin	HU

Packing Units

Unit Type of Package 1	PCE
Package 1 Height	5.00 in (12.7 cm)
Package 1 width	7.64 in (19.4 cm)
Package 1 Length	9.49 in (24.1 cm)

Offer Sustainability

Sustainable offer status	Green Premium product
REACH Regulation	REACH Declaration
REACH free of SVHC	Yes
EU RoHS Directive	Pro-active compliance (Product out of EU RoHS legal scope) EU RoHS Declaration
Toxic heavy metal free	Yes
Mercury free	Yes
RoHS exemption information	Yes
China RoHS Regulation	China RoHS declaration Pro-active China RoHS declaration (out of China RoHS legal scope)

Contractual warranty

Warranty	18 months
----------	-----------