

Product data sheet

Characteristics

QO142M200PQ

Load center, QO, 1 phase, 42 spaces, 52 circuits, 200A convertible main breaker, PoN, NEMA1, Qwik-grip, UL

Product availability : Stock - Normally stocked in distribution facility



Price* : 1,249.00 USD



Main

Marketing Trade Name	QO
Product Type	Load Center
Provided Equipment	Qwik grip assembly kit 1)

Complementary

Tightening Torque	Cover 20 lb.in
Load Center Type	Main breaker
Rated Current	200 A
Number of Spaces	42
Max Short Circuit Current Rating	22 kA
Maximum Number of Single Pole Circuits	52
Maximum Number of Tandem Breakers	10
Number of Phases	1 phase
Voltage Rating	120/240 V AC
Wire Size	AWG 4...300 kcmil aluminium/copper
Ground Bar	Grounding bar (ordered separately)
Busbar Material	Copper busbar
Enclosure Material	Welded sheet steel
Surface Finish	Baked enamel Gray
Box Number	11Q
Height	39.37 in (1000 mm)
Width	14.25 in (362 mm)

* Price is "List Price" and may be subject to a trade discount – check with your local distributor or retailer for actual price.

Depth	3.74 in (95 mm)
-------	-----------------

Environment

Enclosure Rating	NEMA 1 indoor
Ambient Air Temperature for Operation	23 °F (-5 °C) 104 °F (40 °C)
Product Certifications	UL Listed

Ordering and shipping details

Category	10001 - QO PON 1PH LC,12-60 CKT, MB N1
Discount Schedule	DE3A
GTIN	00785901609667
Nbr. of units in pkg.	1
Package weight(Lbs)	23 lb(US) (10.43 kg)
Returnability	Yes
Country of origin	US

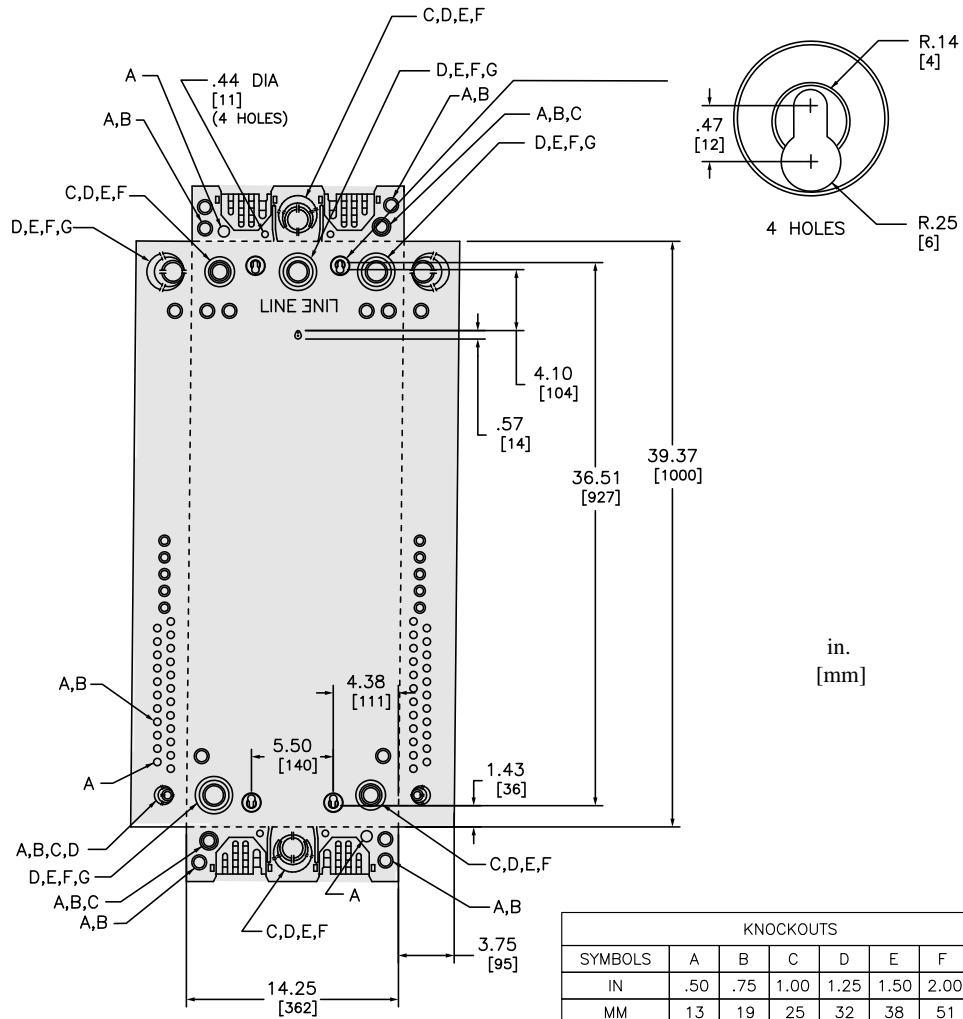
Packing Units

Package 1 Height	4.30 in (10.922 cm)
Package 1 width	14.70 in (37.338 cm)
Package 1 Length	39.50 in (100.330 cm)

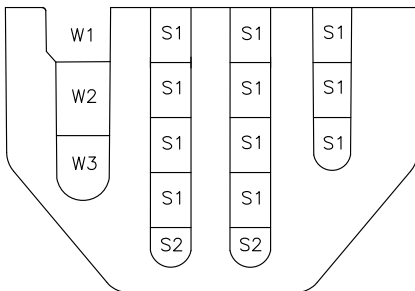
Offer Sustainability

California proposition 65	WARNING: This product can expose you to chemicals including: Lead and lead compounds, which is known to the State of California to cause cancer and birth defects or other reproductive harm. For more information go to www.P65Warnings.ca.gov
RECh Regulation	RECh Declaration
RECh free of SVHC	Yes
EU RoHS Directive	Compliant EU RoHS Declaration
Toxic heavy metal free	Yes
Mercury free	Yes
RoHS exemption information	Yes
China RoHS Regulation	China RoHS declaration Pro-active China RoHS declaration (out of China RoHS legal scope)

Dimensions

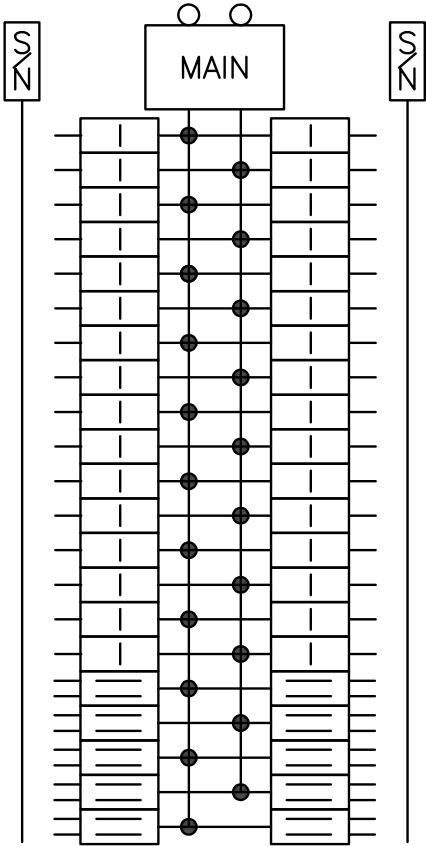


KNOCKOUTS							
SYMBOLS	A	B	C	D	E	F	G
IN	.50	.75	1.00	1.25	1.50	2.00	2.50
MM	13	19	25	32	38	51	64



CABLE TYPE	QWIK GRIP SPACES CAPABILITY						
	10-3 FLAT	10-3 ROUND	10-2	12-3	12-2	14-3	14-2
W1	X	Y	X	X	X	X	X
W2	Y	X	Y	Y	X	Y	X
W3	X	X	Y	Y	X	Y	X
S1	X	X	X	X	Y	X	Y
S2	X	X	X	X	X	X	Y

Wiring Diagram



QO142M200PQ
QO142M200PQCVP