

Product data sheet

Characteristics

HOM3060L225PGCVP

Load center, Homeline, 1 phase, 30 spaces, 60 circuits, 225A convertible main lugs, PoN, NEMA1, gnd bar, value pack

Product availability : Stock - Normally stocked in distribution facility



Price* : 677.90 USD



Main

Product Type	Load Center
Marketing Trade Name	Homeline
Load Center Type	Main lugs
Rated Current	225 A
Number of Spaces	30
Maximum Number of Single Pole Circuits	60
Enclosure Rating	NEMA 1 indoor
Cover Type	Combination flush/surface cover
Electrical Connection	Lugs
Provided Equipment	Grounding bar 1) Circuit-breaker 3) 1P 20 A 120/240 V AC Circuit-breaker 2) 2P 30 A 120/240 V AC

Complementary

Max Short Circuit Current Rating	10 kA
Maximum Number of Tandem Breakers	30
Number of Phases	1 phase
Voltage Rating	120/240 V AC
Wire Size	AWG 4...250 kcmil copper AWG 4...300 kcmil aluminium
Ground Bar	Grounding bar included (not installed)
Wiring Configuration	3-wire
Busbar Material	Tin plated aluminium busbar

* Price is "List Price" and may be subject to a trade discount – check with your local distributor or retailer for actual price.

Enclosure Material	Welded sheet steel
Surface Finish	Baked enamel Gray
Box Number	10
Height	33.78 in (858 mm)
Depth	3.74 in (95 mm)
Width	14.25 in (362 mm)

Environment

Ambient Air Temperature for Operation	23 °F (-5 °C) 104 °F (40 °C)
Product Certifications	UL listed file E-6294

Ordering and shipping details

Category	00185 - MISC. HOM LOAD CENTERS
Discount Schedule	DE3C
GTIN	00785901977230
Nbr. of units in pkg.	1
Package weight(Lbs)	32.25 lb(US) (14.628 kg)
Returnability	Yes
Country of origin	US

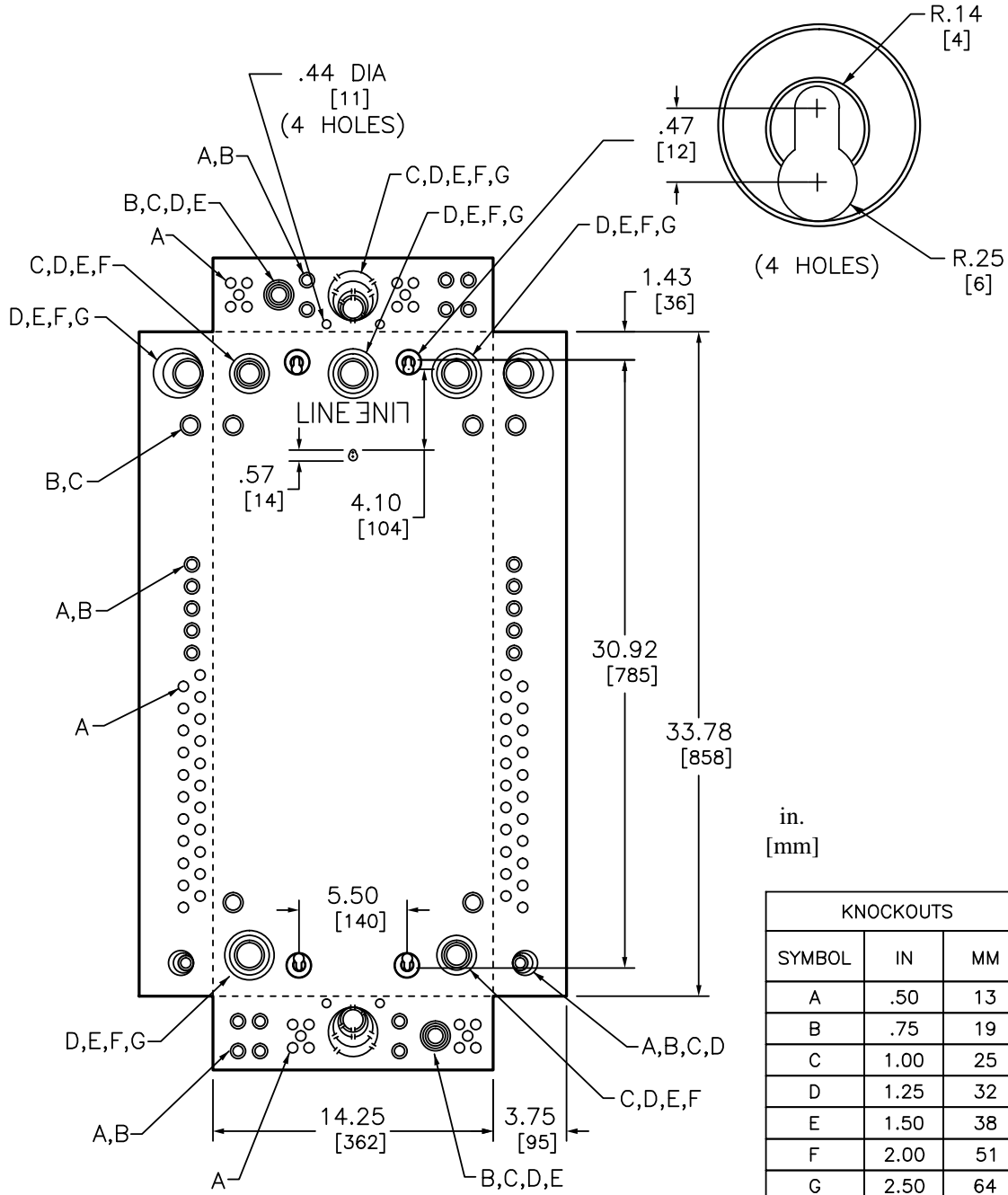
Packing Units

Unit Type of Package 1	PCE
Package 1 Height	5.60 in (14.224 cm)
Package 1 width	16.30 in (41.402 cm)
Package 1 Length	36.40 in (92.456 cm)
Unit Type of Package 2	PAL
Number of Units in Package 2	18
Package 2 Weight	598.00 lb(US) (271.248 kg)
Package 2 Height	36.00 in (91.44 cm)
Package 2 width	40.00 in (101.6 cm)
Package 2 Length	48.00 in (121.92 cm)

Offer Sustainability

Sustainable offer status	Green Premium product
California proposition 65	WARNING: This product can expose you to chemicals including: Lead and lead compounds, which is known to the State of California to cause cancer and birth defects or other reproductive harm. For more information go to www.P65Warnings.ca.gov
REACH Regulation	REACH Declaration
REACH free of SVHC	Yes
EU RoHS Directive	Compliant EU RoHS Declaration
Toxic heavy metal free	Yes
Mercury free	Yes
RoHS exemption information	Yes
China RoHS Regulation	China RoHS declaration Pro-active China RoHS declaration (out of China RoHS legal scope)
Environmental Disclosure	Product Environmental Profile

Dimensions



Wiring Diagram

