

Product data sheet

Characteristics

HOM4284M200PC

Load center, Homeline, 1 phase, 42 spaces, 84 circuits, 200A convertible main breaker, PoN, NEMA1, combo cover

Product availability : Non-Stock - Not normally stocked in distribution facility



Price* : 1,171.85 USD



Main

Product Type	Load Center
Marketing Trade Name	Homeline
Load Center Type	Main breaker
Rated Current	200 A
Number of Spaces	42
Maximum Number of Single Pole Circuits	84
Enclosure Rating	NEMA 1 indoor
Cover Type	Combination flush/surface cover
Electrical Connection	Lugs
Provided Equipment	Circuit-breaker 1) 2P 200 A 120/240 V AC main supply ready assembled

Complementary

Max Short Circuit Current Rating	22 kA
Maximum Number of Tandem Breakers	42
Number of Phases	1 phase
Voltage Rating	120/240 V AC
Wire Size	AWG 4...250 kcmil copper or aluminium
Ground Bar	Grounding bar (ordered separately)
Wiring Configuration	3-wire
Busbar Material	Tin plated aluminium busbar
Enclosure Material	Welded sheet steel
Surface Finish	Baked enamel Gray

* Price is "List Price" and may be subject to a trade discount – check with your local distributor or retailer for actual price.

Box Number	12
Height	39.37 in (1000 mm)
Depth	3.74 in (95 mm)
Width	14.25 in (362 mm)

Environment

Ambient Air Temperature for Operation	23 °F (-5 °C) 104 °F (40 °C)
Product Certifications	UL listed file E-6294

Ordering and shipping details

Category	00045 - HOM LC&CVR,12-42 CKT,NEMA1
Discount Schedule	DE3C
GTIN	00785901974383
Nbr. of units in pkg.	1
Package weight(Lbs)	37.74 lb(US) (17.119 kg)
Returnability	Yes
Country of origin	US

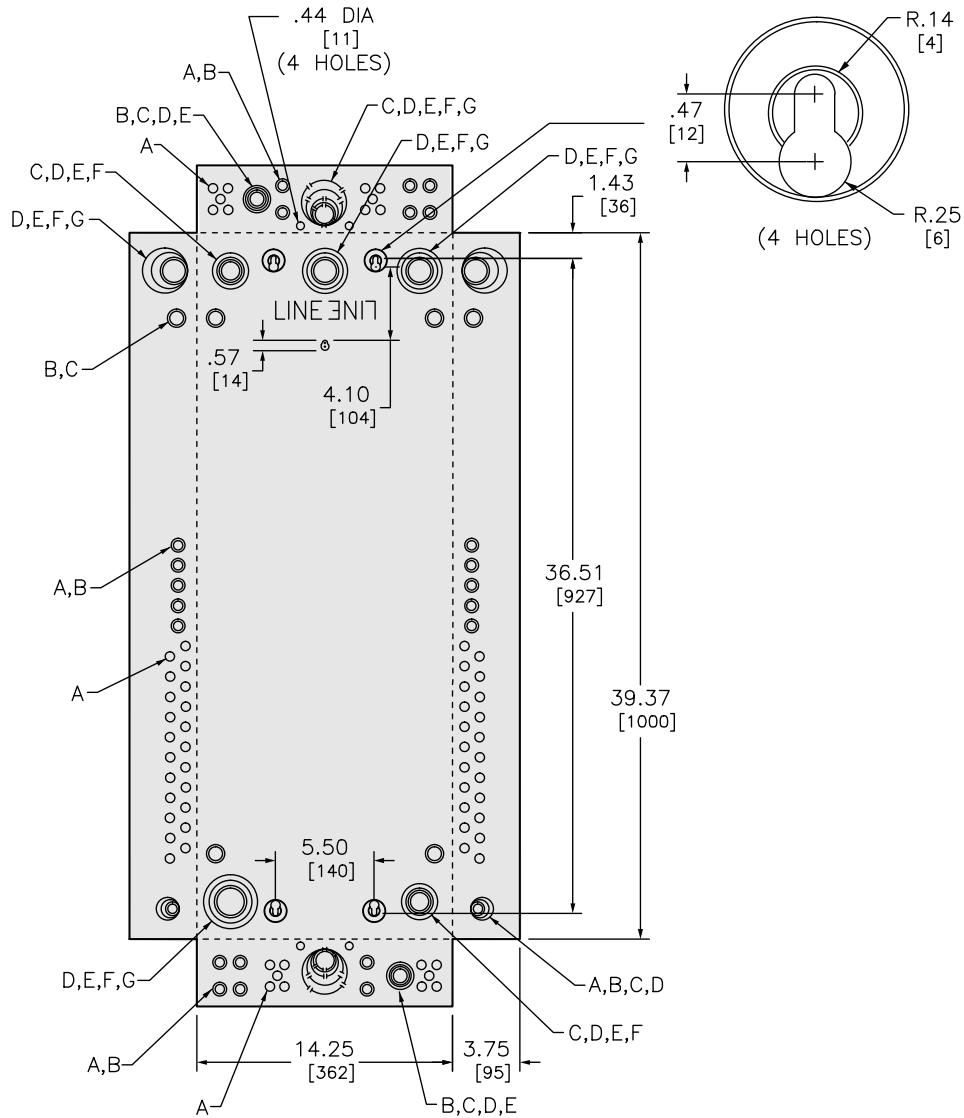
Packing Units

Unit Type of Package 1	PCE
Package 1 Height	5.50 in (13.97 cm)
Package 1 width	16.10 in (40.894 cm)
Package 1 Length	42.20 in (107.188 cm)
Unit Type of Package 2	PAL
Number of Units in Package 2	18
Package 2 Weight	720.00 lb(US) (326.586 kg)
Package 2 Height	38.00 in (96.52 cm)
Package 2 width	42.20 in (107.188 cm)
Package 2 Length	48.00 in (121.92 cm)

Offer Sustainability

Sustainable offer status	Green Premium product
California proposition 65	WARNING: This product can expose you to chemicals including: Lead and lead compounds, which is known to the State of California to cause cancer and birth defects or other reproductive harm. For more information go to www.P65Warnings.ca.gov
REACH Regulation	REACH Declaration
REACH free of SVHC	Yes
EU RoHS Directive	Compliant EU RoHS Declaration
Toxic heavy metal free	Yes
Mercury free	Yes
RoHS exemption information	Yes
China RoHS Regulation	China RoHS declaration Pro-active China RoHS declaration (out of China RoHS legal scope)
Environmental Disclosure	Product Environmental Profile

Dimensions

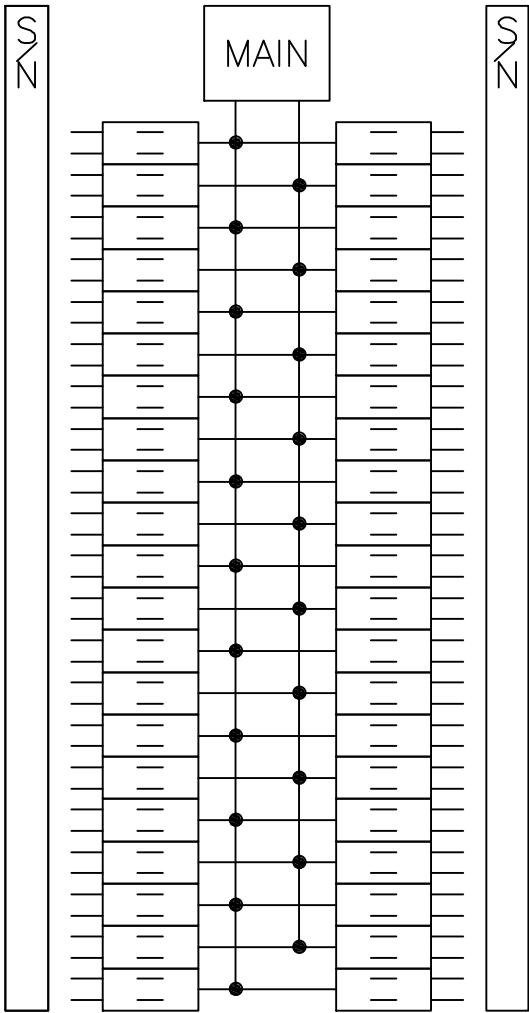


KNOCKOUTS							
SYMBOL	A	B	C	D	E	F	G
IN	.50	.75	1.00	1.25	1.50	2.00	2.50
MM	13	19	25	32	38	51	64

in.
[mm]

All dimensions are approximate. Refer to technical drawings and documents.

Wiring Diagram



HOM4284M200PC
HOM4284M225PC