

# Product data sheet

## Characteristics

# HOM4284L225PC

Load center, Homeline, 1 phase, 42 spaces,  
84 circuits, 225A convertible main lugs, PoN,  
NEMA1, combo cover

Product availability : Stock - Normally stocked in distribution facility



Price\* : 732.00 USD



### Main

Product Type	Load Center
Marketing Trade Name	Homeline
Load Center Type	Main lugs
Rated Current	225 A
Number of Spaces	42
Maximum Number of Single Pole Circuits	84
Enclosure Rating	NEMA 1 indoor
Cover Type	Combination flush/surface cover
Electrical Connection	Lugs

### Complementary

Max Short Circuit Current Rating	10 kA
Maximum Number of Tandem Breakers	42
Number of Phases	1 phase
Voltage Rating	120/240 V AC
Wire Size	AWG 4...250 kcmil copper AWG 4...300 kcmil aluminium
Ground Bar	Grounding bar (ordered separately)
Wiring Configuration	3-wire
Busbar Material	Tin plated aluminium busbar
Enclosure Material	Welded sheet steel
Surface Finish	Baked enamel Gray

\* Price is "List Price" and may be subject to a trade discount – check with your local distributor or retailer for actual price.

Box Number	12
Height	39.37 in (1000 mm)
Depth	3.74 in (95 mm)
Width	14.25 in (362 mm)

## Environment

Ambient Air Temperature for Operation	23 °F (-5 °C) 104 °F (40 °C)
Product Certifications	UL listed file E-6294

## Ordering and shipping details

Category	00045 - HOM LC&CVR,12-42 CKT,NEMA1
Discount Schedule	DE3C
GTIN	00785901974352
Nbr. of units in pkg.	1
Package weight(Lbs)	35.9 lb(US) (16.28 kg)
Returnability	Yes
Country of origin	US

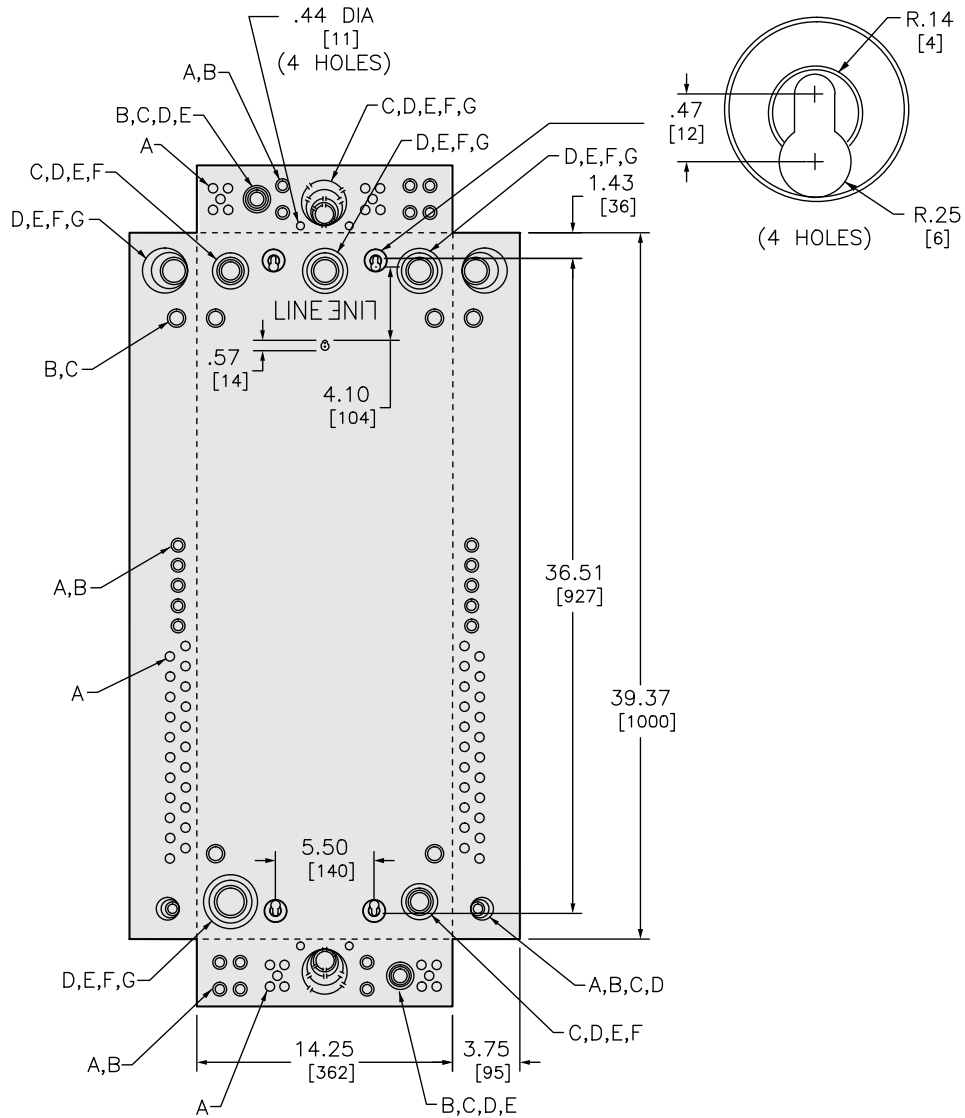
## Packing Units

Package 1 Height	0.46 ft (0.140 m)
Package 1 width	1.36 ft (0.414 m)
Package 1 Length	3.52 ft (1.072 m)

## Offer Sustainability

Sustainable offer status	Green Premium product
California proposition 65	WARNING: This product can expose you to chemicals including: Lead and lead compounds, which is known to the State of California to cause cancer and birth defects or other reproductive harm. For more information go to <a href="http://www.P65Warnings.ca.gov">www.P65Warnings.ca.gov</a>
REACH Regulation	<a href="#">REACH Declaration</a>
REACH free of SVHC	Yes
EU RoHS Directive	Compliant <a href="#">EU RoHS Declaration</a>
Toxic heavy metal free	Yes
Mercury free	Yes
RoHS exemption information	<a href="#">Yes</a>
China RoHS Regulation	<a href="#">China RoHS declaration</a> Pro-active China RoHS declaration (out of China RoHS legal scope)
Environmental Disclosure	<a href="#">Product Environmental Profile</a>

Dimensions

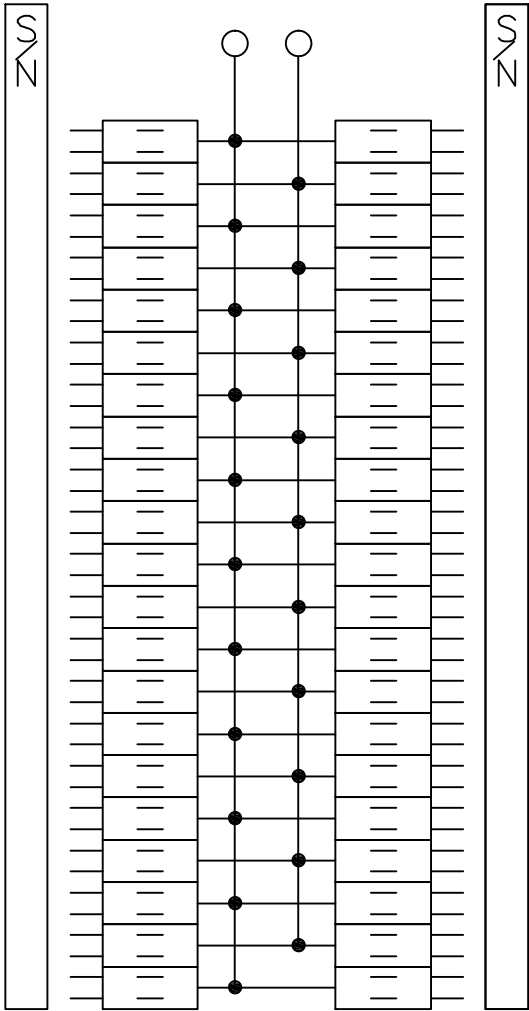


KNOCKOUTS							
SYMBOL	A	B	C	D	E	F	G
IN	.50	.75	1.00	1.25	1.50	2.00	2.50
MM	13	19	25	32	38	51	64

in.  
[mm]

All dimensions are approximate. Refer to technical drawings and documents.

Wiring Diagram



HOM4284L225PC