

Product data sheet

Characteristics

QC816F200SL

Meter mains, QO, combination service entrance, ringless socket, 200A, surface mount, maximum 8 spaces, 16 circuits, lever bypass

Product availability : Stock - Normally stocked in distribution facility



Price* : 2,690.00 USD



Main

Product or component type	Meter Mains
Range of product	QO

Complementary

Line Rated Current	200 A
Short-circuit current	22 kA
Network number of phases	1
Meter socket type	Ringless
Mounting	Surface
Number of spaces	8
Number of circuits	16
Number of Tandem Breakers	8
Hub type	A
Electrical connection	Feed-thru lugs service ground Feed-thru lugs line side
Wire Size	AWG 6...350 kcmil copper or aluminium)line side AWG 8...AWG 2/0 copper or aluminium)service ground
Tightening torque	Main lugs 250 lb.in, AWG 6...350 kcmil, aluminium/copper Service ground 50 lb.in, AWG 14...AWG 2/0, copper Service ground 50 lb.in, AWG 12...AWG 2/0, aluminium Branch lugs 35 lb.in, AWG 6...AWG 4, aluminium/copper Branch lugs 25 lb.in, AWG 8, aluminium/copper Branch lugs 20 lb.in, AWG 14...AWG 10, copper Branch lugs 20 lb.in, AWG 12...AWG 10, aluminium Cover 10 lb.in
Disconnect	Service disconnect (factory installed)

* Price is "List Price" and may be subject to a trade discount – check with your local distributor or retailer for actual price.

Jul 30, 2021

Main Breaker Rating	200 A
Branch Breaker Rating	200 A
Service feed location	OH UG
Bypass type	Class 320 lever bypass
Height	48.62 in (1234.95 mm)
Width	18.35 in (466.09 mm)
Depth	6.05 in (153.67 mm)

Environment

Product certifications	UL E-6294
------------------------	-----------

Ordering and shipping details

Category	00022 - QO METER MAINS
Discount Schedule	DE3A
GTIN	00785901694052
Nbr. of units in pkg.	1
Package weight(Lbs)	77 lb(US) (34.93 kg)
Returnability	Yes
Country of origin	MX

Packing Units

Package 1 Height	0.57 ft (0.173 m)
Package 1 width	1.60 ft (0.488 m)
Package 1 Length	4.14 ft (1.262 m)

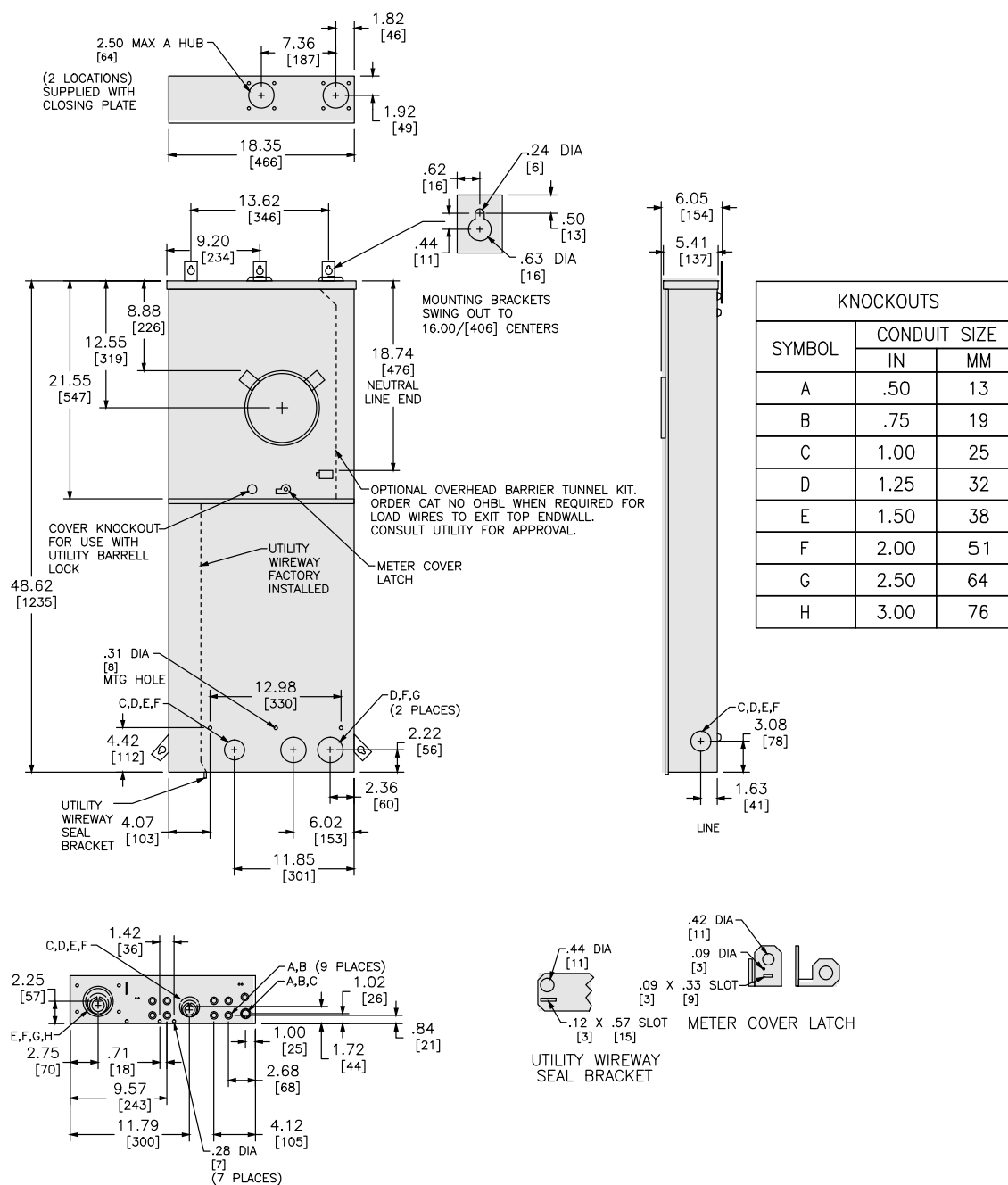
Offer Sustainability

California proposition 65	WARNING: This product can expose you to chemicals including: lead and lead compounds, which is known to the State of California to cause cancer and birth defects or other reproductive harm. For more information go to www.P65Warnings.ca.gov
REACH Regulation	REACH Declaration
REACH free of SVHC	Yes
EU RoHS Directive	Compliant EU RoHS Declaration
Mercury free	Yes
RoHS exemption information	Yes
China RoHS Regulation	China RoHS declaration Product out of China RoHS scope. Substance declaration for your information.

Contractual warranty

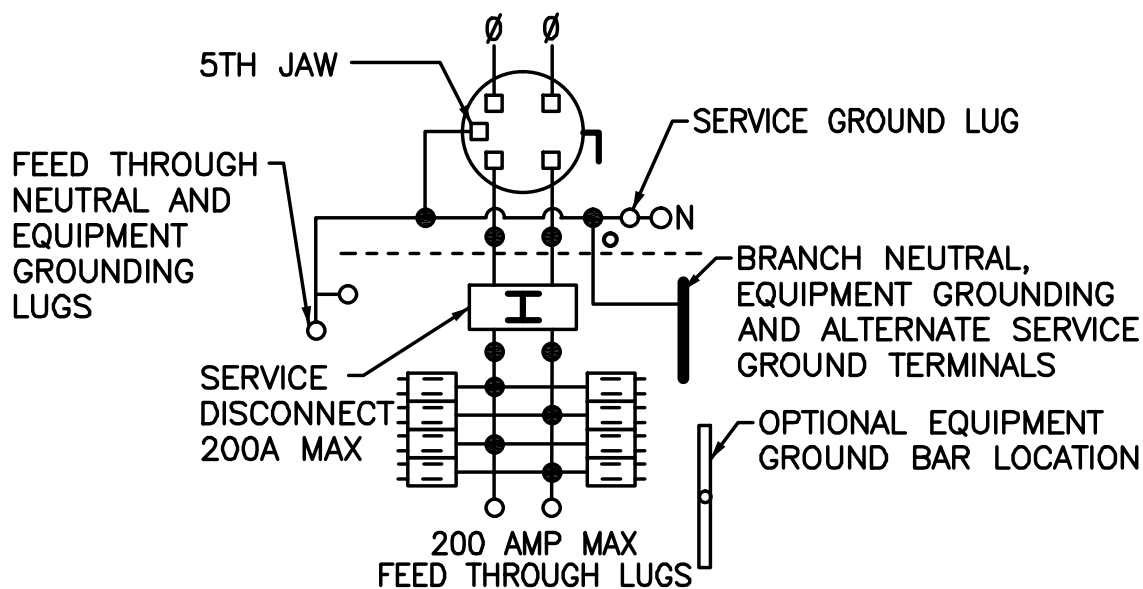
Warranty	18 months
----------	-----------

Dimensions



All dimensions are approximate. Also refer to technical documentation.

Wiring Diagram



-  TWO SINGLE POLE, ONE PLUG-ON SPACE TYPE QOT OR ONE SINGLE POLE TYPE QO.
-  TWO POLE TYPE QO, QOA OR QOC (125A MAX) MAY PLUG ON TWO ADJACENT SPACES.
-  TWO POLE TYPE QOC (150-200A) MAY PLUG ON FOUR ADJACENT SPACES.

TOTAL CIRCUIT BREAKER HANDLE RATING NOT TO EXCEED 160A PER CIRCUIT CONNECTOR.

A SQUARE D UL LISTED SECONDARY SURGE ARRESTER MAY PLUG ON TWO ADJACENT SPACES. ORDER CATALOG NO., QO2175SB.