

Product data sheet

Characteristics

RC816F200SL

Meter mains, Homeline, combination service entrance, ringless socket, 200A, outdoor surface mount, maximum 8 spaces, 16 circuits, lever bypass

Product availability : Stock - Normally stocked in distribution facility

SQUARE D

Price* : 2,690.00 USD



Main

Product or component type	Meter Mains
Range of product	Homeline

Complementary

Line Rated Current	200 A
Short-circuit current	22 kA
Network number of phases	1
Meter socket type	Ringless
Mounting	Surface outdoor)
Number of spaces	8
Number of circuits	16
Number of Tandem Breakers	8
Hub type	A
Electrical connection	Feed-thru lugs service ground Feed-thru lugs line side
Wire Size	AWG 8...AWG 2/0 aluminium/copper)service ground AWG 6...350 kcmil aluminium/copper)line side
Tightening torque	Main lugs 250 lb.in, AWG 6...350 kcmil, aluminium/copper Service ground 50 lb.in, AWG 14...AWG 2/0, copper Service ground 50 lb.in, AWG 12...AWG 2/0, aluminium Branch lugs 35 lb.in, AWG 6...AWG 4, aluminium/copper Branch lugs 25 lb.in, AWG 8, aluminium/copper Branch lugs 20 lb.in, AWG 14...AWG 10, copper Branch lugs 20 lb.in, AWG 12...AWG 10, aluminium Cover 10 lb.in

* Price is "List Price" and may be subject to a trade discount – check with your local distributor or retailer for actual price.

Jul 30, 2021

Disconnect	Service disconnect (factory installed)
Main Breaker Rating	200 A
Branch Breaker Rating	200 A
Service feed location	OH UG
Bypass type	Class 320 lever bypass
Height	48.62 in (1234.95 mm)
Width	18.35 in (466.09 mm)
Depth	5.32 in (135.13 mm)

Environment

Product certifications	UL E-6294
------------------------	-----------

Ordering and shipping details

Category	00048 - HOM METER MAINS
Discount Schedule	DE3A
GTIN	00785901976615
Nbr. of units in pkg.	1
Package weight(Lbs)	77 lb(US) (34.93 kg)
Returnability	Yes
Country of origin	MX

Packing Units

Unit Type of Package 1	PCE
Package 1 Height	7.00 in (17.78 cm)
Package 1 width	19.50 in (49.53 cm)
Package 1 Length	50.00 in (127 cm)
Unit Type of Package 2	PAL
Number of Units in Package 2	12
Package 2 Weight	952.00 lb(US) (431.82 kg)
Package 2 Height	43.50 in (110.49 cm)
Package 2 width	40.00 in (101.6 cm)
Package 2 Length	49.50 in (125.73 cm)

Offer Sustainability

California proposition 65	WARNING: This product can expose you to chemicals including: Lead and lead compounds, which is known to the State of California to cause cancer and birth defects or other reproductive harm. For more information go to www.P65Warnings.ca.gov
REACH Regulation	REACH Declaration
REACH free of SVHC	Yes
EU RoHS Directive	Compliant EU RoHS Declaration
Mercury free	Yes
RoHS exemption information	Yes
China RoHS Regulation	China RoHS declaration Product out of China RoHS scope. Substance declaration for your information.

Contractual warranty

Warranty	18 months
----------	-----------

RC816F200SL

Technical drawing showing the front and side views of a meter assembly with dimensions in inches and millimeters.

Front View Dimensions:

- Top mounting brackets: 2.50 MAX A HUB [64], 7.36 [187], 1.82 [46], 1.92 [49], 18.35 [466]
- Mounting brackets swing out to 16.00/[406] CENTERS
- Top mounting bracket details: 13.62 [346], 9.20 [234], .62 [16], .24 DIA [6], .50 [13], .63 DIA [16]
- Overall height: 21.55 [547]
- Internal vertical dimensions: 8.88 [226], 12.55 [319]
- Neutral line end: 18.74 [476]
- Cover knockout for use with utility barrell lock
- Utility wireway
- Meter cover latch
- Overall width: 48.62 [1235]
- Bottom mounting details: .31 DIA [8] MTG HOLE, C,D,E,F, 4.42 [112], 12.98 [330], D,F,G (2 PLACES), 2.22 [56], 2.36 [60], 6.02 [153], 11.85 [301], 4.07 [103], 6.02 [153], SEAL BRACKET
- Utility wireway seal bracket

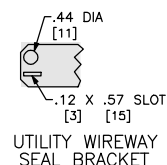
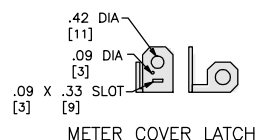
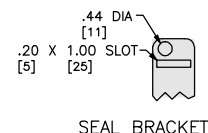
Side View Dimensions:

- Overall height: 6.05 [154], 5.41 [137]
- Bottom mounting details: C,D,E,F, 3.08 [78], 1.63 [41]

Bottom View Dimensions:

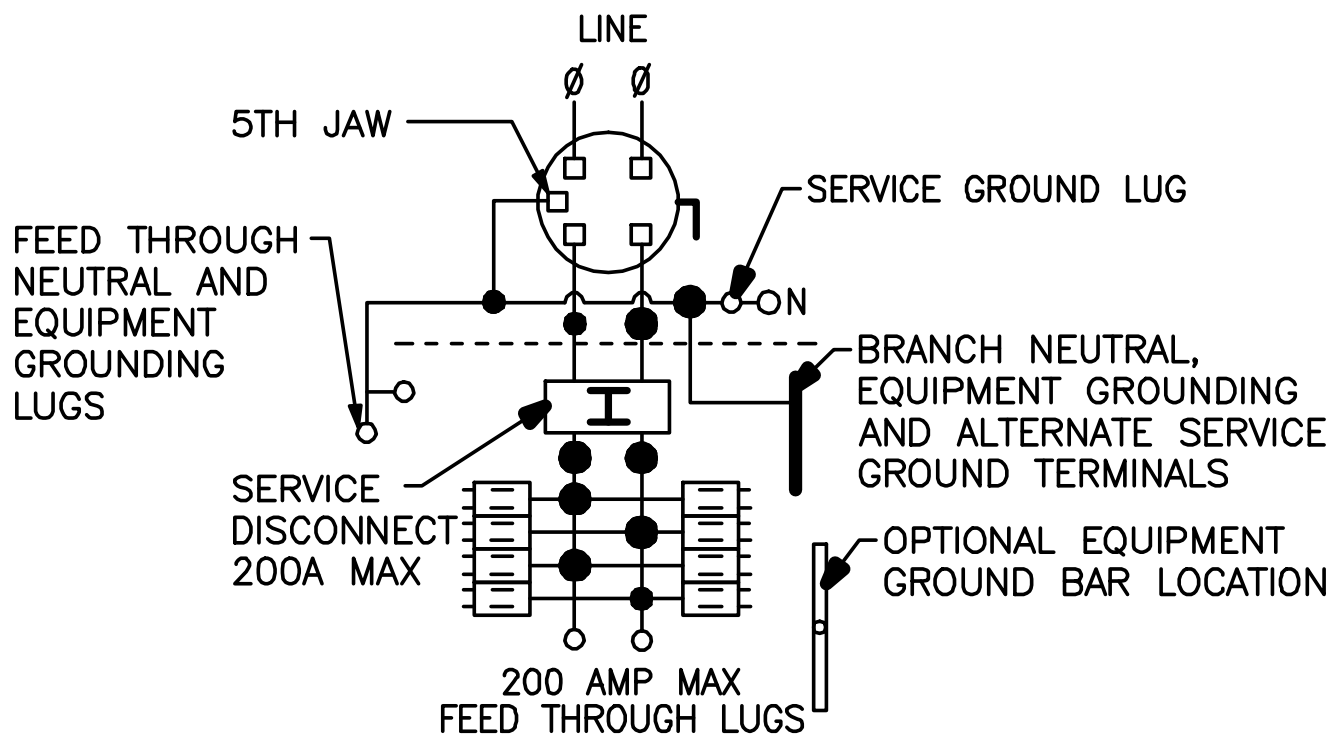
- Overall width: 11.79 [300]
- Mounting details: 2.25 [57], E,F,G,H, 2.75 [70], .72 [18], 9.57 [243], 1.42 [36], C,D,E,F, .28 DIA [7] (7 PLACES), A,B (9 PLACES), A,B,C, 1.02 [26], 1.00 [25], 1.72 [44], .84 [21], 2.68 [68], 4.12 [105]

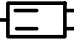
KNOCKOUTS		
SYMBOL	CONDUIT SIZE	
	IN	MM
A	.50	13
B	.75	19
C	1.00	25
D	1.25	32
E	1.50	38
F	2.00	51
G	2.50	64
H	3.00	76



Life Is On | **Schneider**
Electric

Wiring Diagram



-  TWO SINGLE POLE, ONE PLUG-ON SPACE TYPE HOMT OR ONE SINGLE POLE TYPE HOM. TWO POLE TYPE HOMT OR HOM (15-100A) MAY PLUG ON TWO ADJACENT SPACES. TWO POLE HOMA (150-200A) MAY PLUG ON FOUR ADJACENT SPACES.

A SQUARE D UL LISTED SECONDARY SURGE ARRESTER MAY PLUG ON TWO ADJACENT SPACES. ORDER CATALOG NO. HOM2175SB.