

## Product data sheet

### Characteristics

# RC816D400SL

Meter mains, Homeline, combination service entrance, ringless socket, 400A, surface mount, maximum 8 spaces, 16 circuits, lever bypass

Product availability : Stock - Normally stocked in distribution facility



Price\* : 3,750.00 USD



### Main

Product or component type	Meter Mains
Range of product	Homeline

### Complementary

Line Rated Current	400 A
Network number of phases	1
Meter socket type	Ringless
Mounting	Surface
Number of spaces	8
Number of circuits	16
Number of Tandem Breakers	8
Electrical connection	Feed-thru lugs
Wire Size	AWG 4...600 kcmil aluminium/copper) AWG 1/0...350 kcmil 2 aluminium/copper)
Tightening torque	Main lugs 500 lb.in, aluminium/copper Main lugs 500 lb.in, AWG 4/0...600 kcmil, aluminium/copper Service ground 50 lb.in, AWG 14...AWG 1/0, copper Service ground 50 lb.in, AWG 12...AWG 1/0, aluminium Branch lugs 50 lb.in, AWG 3...AWG 2/0, aluminium/copper Branch lugs 45 lb.in, AWG 6...AWG 4, aluminium/copper Branch lugs 40 lb.in, AWG 8, aluminium/copper Branch lugs 35 lb.in, AWG 14...AWG 10, copper Branch lugs 35 lb.in, AWG 12...AWG 10, aluminium Cover 10 lb.in
Disconnect	Service disconnect (factory installed)
Main Breaker Rating	200 A
Branch Breaker Rating	30 A

\* Price is "List Price" and may be subject to a trade discount – check with your local distributor or retailer for actual price.

Jul 30, 2021

	50 A 200 A
Service feed location	OH UG
Bypass type	Class 320 lever bypass
Height	32.68 in (830.07 mm)
Width	28 in (711.20 mm)
Depth	7.89 in (200.41 mm)

## Environment

NEMA degree of protection	NEMA 3R
Product certifications	UL E-6294

## Ordering and shipping details

Category	00022 - QO METER MAINS
Discount Schedule	DE3A
GTIN	00785901335276
Nbr. of units in pkg.	1
Package weight(Lbs)	77 lb(US) (34.93 kg)
Returnability	Yes

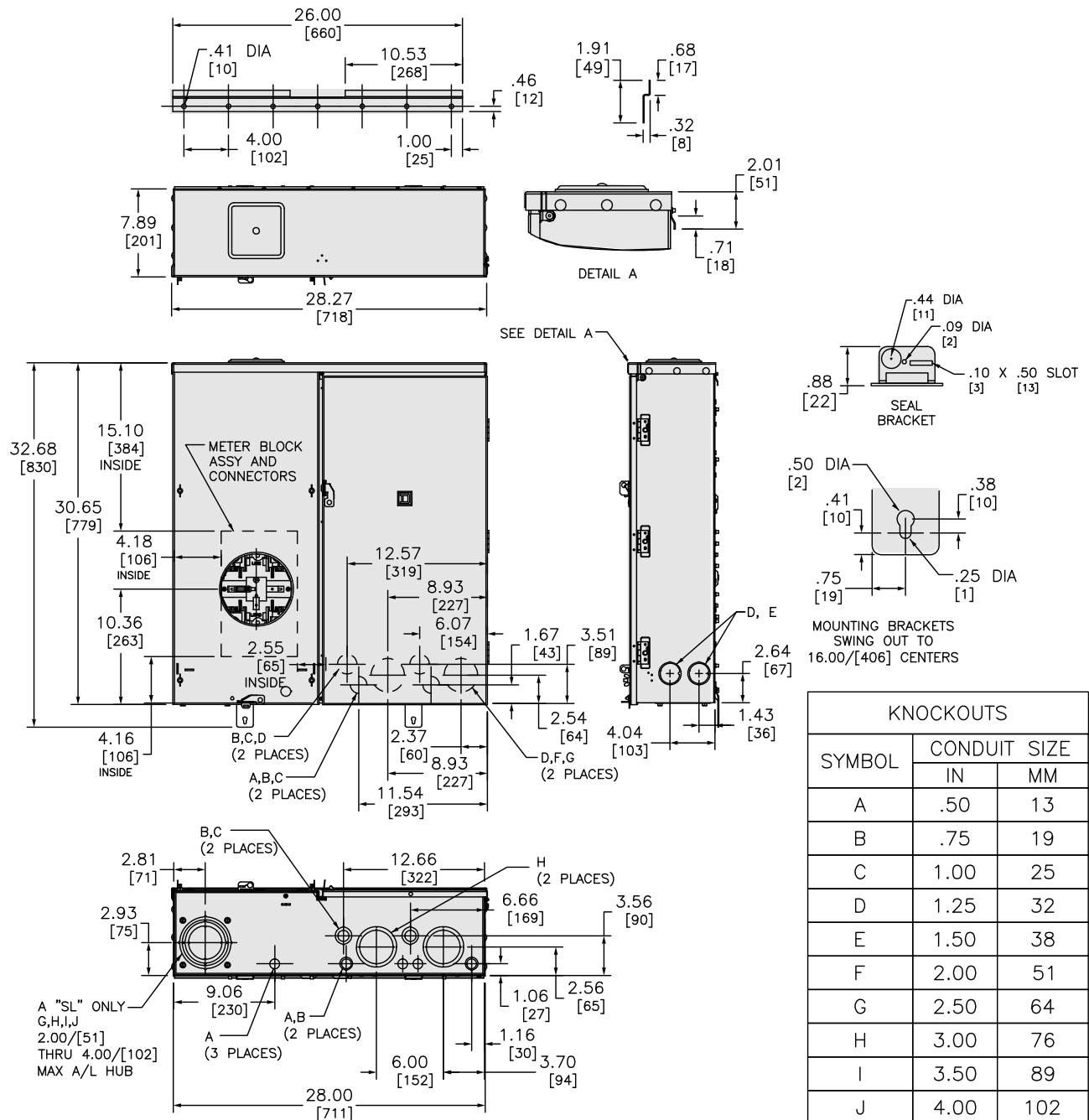
## Packing Units

Package 1 Height	7.90 in (20.066 cm)
Package 1 width	28.30 in (71.882 cm)
Package 1 Length	30.70 in (77.978 cm)

## Offer Sustainability

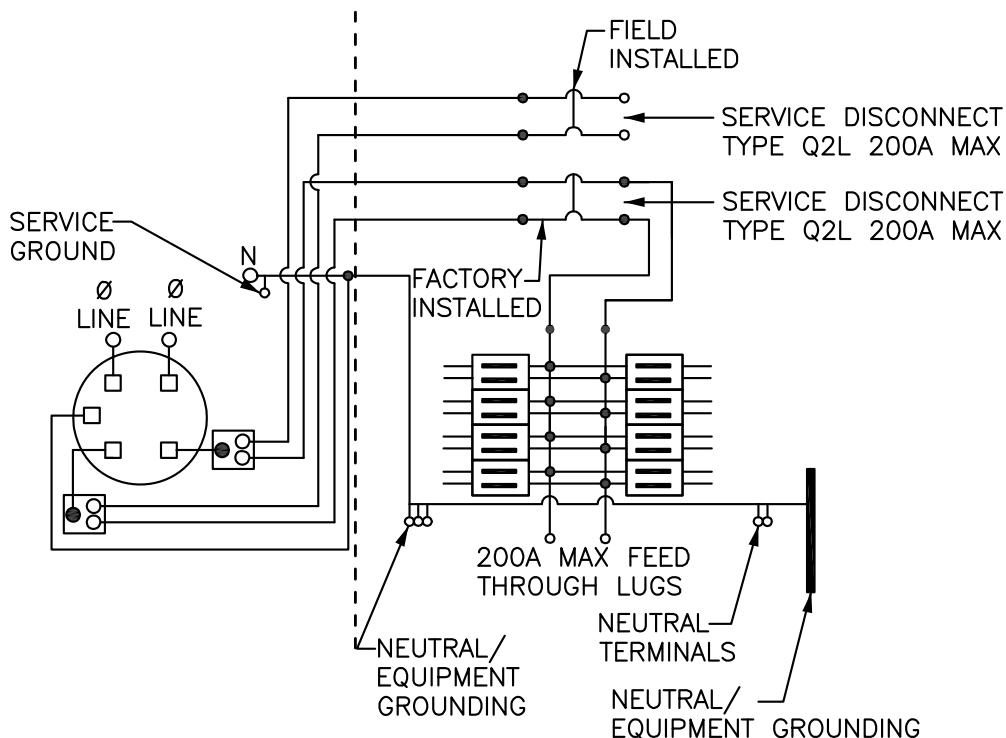
California proposition 65	WARNING: This product can expose you to chemicals including: Lead and lead compounds, which is known to the State of California to cause cancer and birth defects or other reproductive harm. For more information go to <a href="http://www.P65Warnings.ca.gov">www.P65Warnings.ca.gov</a>
RECh Regulation	<a href="#">RECh Declaration</a>
RECh free of SVHC	Yes
EU RoHS Directive	Compliant <a href="#">EU RoHS Declaration</a>
Mercury free	Yes
RoHS exemption information	<a href="#">Yes</a>
China RoHS Regulation	<a href="#">China RoHS declaration</a> Product out of China RoHS scope. Substance declaration for your information.

## Dimensions



All dimensions are approximate. Also refer to technical documentation.

## Wiring Diagram



TWO SINGLE POLE, ONE PLUG-ON SPACE TYPE HOMT OR ONE SINGLE POLE TYPE HOM.

TWO POLE TYPE HOM OR HOMA (125 MAX) MAY PLUG-ON TWO ADJACENT SPACES.

TWO POLE TYPE HOMA (150-200A MAX) MAY PLUG-ON FOUR ADJACENT SPACES, ON RIGHT SIDE ONLY.



ONE SINGLE POLE, ONE PLUG-ON SPACE TYPE HOM ONLY.

TWO POLE TYPE HOM OR HOMA (125 MAX) MAY PLUG-ON TWO ADJACENT SPACES.

TWO POLE TYPE HOMA (150-200A MAX) MAY PLUG-ON FOUR ADJACENT SPACES, ON RIGHT SIDE ONLY.