

# RC816F200SS

Meter mains, Homeline, combination service entrance, ringless socket, 200A, outdoor surface mount, maximum 8 spaces, 16 circuits, no bypass

Product availability : Non-Stock - Not normally stocked in distribution facility



Price\* : 1,359.00 USD



## Main

Product or component type	Meter Mains
Range of product	Homeline
Includes	Circuit-breaker 1) 2P 200 A 120/240 V AC main supply ready assembled

## Complementary

Line Rated Current	200 A
Short-circuit current	22 kA
Network number of phases	1
Meter socket type	Ringless
Mounting	Surface outdoor)
Number of spaces	8
Number of circuits	16
Number of Tandem Breakers	8
Hub type	A
Electrical connection	Feed-thru lugs service ground Feed-thru lugs line side
Wire Size	AWG 8...AWG 2/0 aluminium/copper)service ground AWG 6...350 kcmil aluminium/copper)line side
Tightening torque	Main lugs 250 lb.in, AWG 6...350 kcmil, aluminium/copper Service ground 50 lb.in, AWG 14...AWG 2/0, copper Service ground 50 lb.in, AWG 12...AWG 2/0, aluminium Branch lugs 35 lb.in, AWG 6...AWG 4, aluminium/copper Branch lugs 25 lb.in, AWG 8, aluminium/copper Branch lugs 20 lb.in, AWG 14...AWG 10, copper Branch lugs 20 lb.in, AWG 12...AWG 10, aluminium Cover 10 lb.in

\* Price is "List Price" and may be subject to a trade discount – check with your local distributor or retailer for actual price.

Disconnect	Service disconnect (factory installed)
Main Breaker Rating	200 A
Branch Breaker Rating	200 A
Service feed location	OH UG
Bypass type	No bypass
Height	41.16 in (1045.46 mm)
Width	18.76 in (476.50 mm)
Depth	5.41 in (137.41 mm)

## Environment

Product certifications	UL E-6294
------------------------	-----------

## Ordering and shipping details

Category	00048 - HOM METER MAINS
Discount Schedule	DE3A
GTIN	00785901946601
Nbr. of units in pkg.	1
Package weight(Lbs)	1 lb(US) (0.45 kg)
Returnability	No

## Packing Units

Package 1 Height	0.44 ft (0.135 m)
Package 1 width	1.53 ft (0.467 m)
Package 1 Length	3.41 ft (1.039 m)

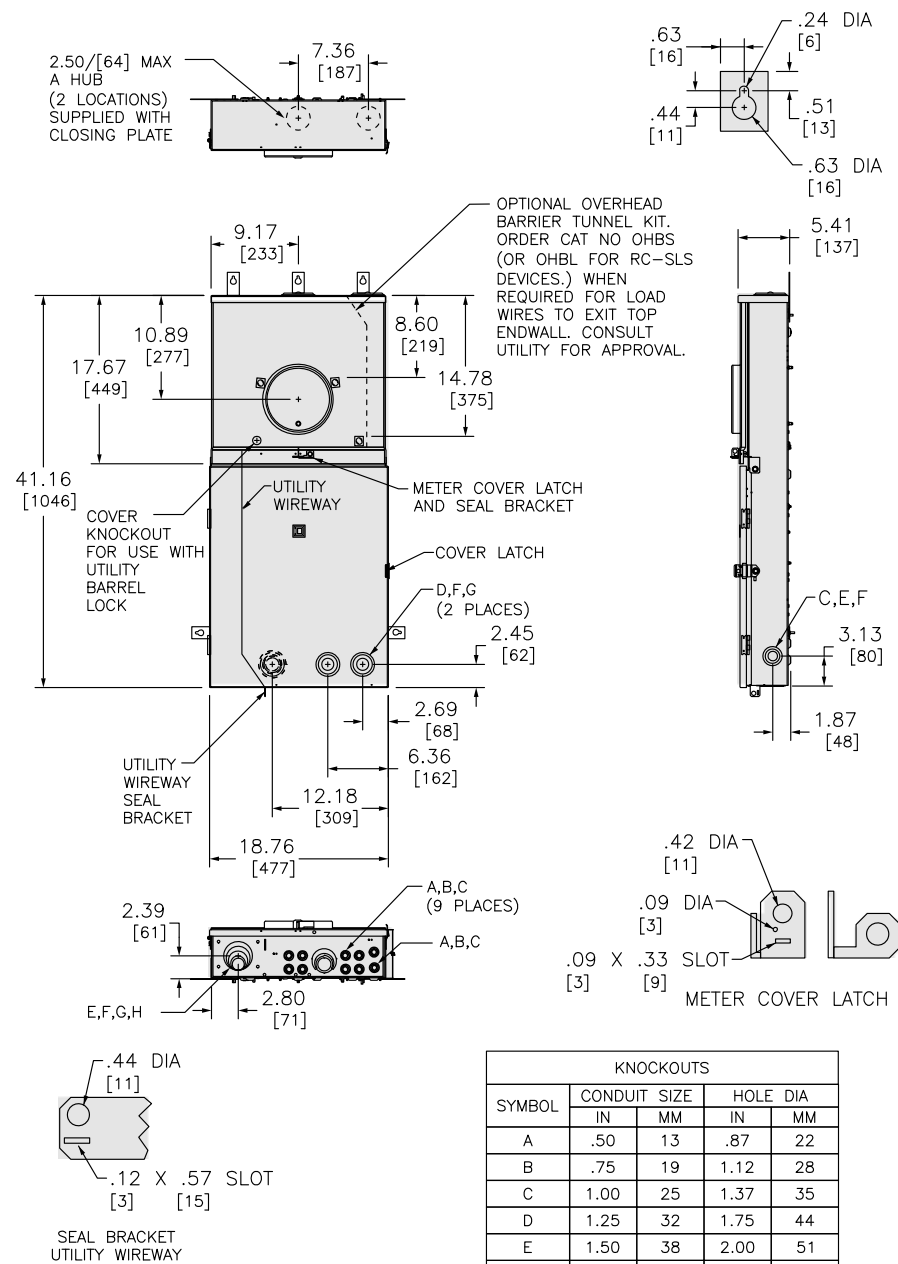
## Offer Sustainability

Sustainable offer status	Green Premium product
California proposition 65	WARNING: This product can expose you to chemicals including: Lead and lead compounds, which is known to the State of California to cause cancer and birth defects or other reproductive harm. For more information go to <a href="http://www.P65Warnings.ca.gov">www.P65Warnings.ca.gov</a>
REACH free of SVHC	Yes
EU RoHS Directive	Compliant <a href="#">EU RoHS Declaration</a>
Mercury free	Yes
RoHS exemption information	<a href="#">Yes</a>
China RoHS Regulation	<a href="#">China RoHS declaration</a> Product out of China RoHS scope. Substance declaration for your information.
Environmental Disclosure	<a href="#">Product Environmental Profile</a>

## Contractual warranty

Warranty	18 months
----------	-----------

## Dimensions

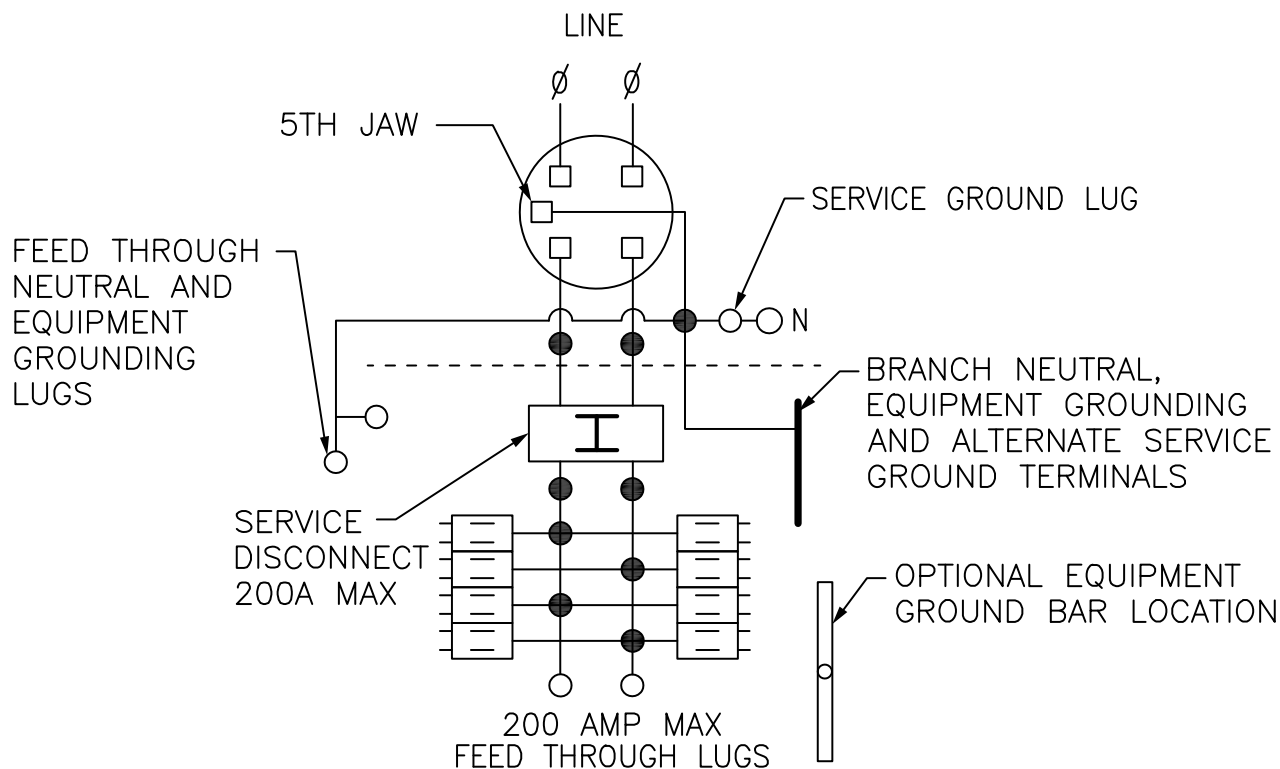


DUAL DIMENSIONS: INCHES  
MILLIMETERS

SYMBOL	CONDUIT SIZE		HOLE DIA	
	IN	MM	IN	MM
A	.50	13	.87	22
B	.75	19	1.12	28
C	1.00	25	1.37	35
D	1.25	32	1.75	44
E	1.50	38	2.00	51
F	2.00	51	2.50	64
G	2.50	64	3.00	76
H	3.00	76	3.62	92

All dimensions are approximate. Also refer to technical documentation.

Wiring Diagram



● TWO SINGLE POLE, ONE PLUG-ON SPACE TYPE HOMT OR ONE SINGLE POLE TYPE HOM. TWO POLE TYPE HOMT, HOM OR HOMA (125A MAX) MAY PLUG ON TWO ADJACENT SPACES. TWO POLE HOMA (150-200A) MAY PLUG ON FOUR ADJACENT SPACES.

TOTAL CIRCUIT BREAKER HANDLE RATING NOT TO EXCEED 160A PER CIRCUIT CONNECTOR.

A SQUARE D UL LISTED SECONDARY SURGE ARRESTER MAY PLUG ON TWO ADJACENT SPACES. ORDER CATALOG NO HOM2175SB.