

Product data sheet

Characteristics

RC2040M200S

All in one, Homeline, combination service entrance, ringless socket, 200A, surface mount, 20 spaces, 40 circuits, 22kA SCCR, no bypass

Product availability : Stock - Normally stocked in distribution facility



Price* : 1,832.00 USD



Main

Product or component type	All-In-One
Range of product	QO
Meter socket type	Ringless
Hub type	A

Complementary

Line Rated Current	200 A
Short-circuit current	22 kA
Mounting	Surface
Number of spaces	20
Number of circuits	40
Number of Tandem Breakers	20
Electrical connection	Lugs line side Lugs service ground
Wire Size	AWG 6...350 kcmil aluminium/copper)line side AWG 8...AWG 2/0 aluminium/copper)service ground
Tightening torque	Main lugs 250 lb.in, AWG 6...350 kcmil, aluminium/copper Service ground 50 lb.in, AWG 14...AWG 2/0, copper Service ground 50 lb.in, AWG 12...AWG 2/0, aluminium Branch lugs 50 lb.in, AWG 14...AWG 1/0, copper Branch lugs 50 lb.in, AWG 12...AWG 1/0, aluminium Branch lugs 35 lb.in, AWG 6...AWG 4, aluminium/copper Branch lugs 25 lb.in, AWG 8, aluminium/copper Branch lugs 20 lb.in, AWG 14...AWG 10, aluminium/copper Branch lugs 20 lb.in, AWG 12...AWG 10, aluminium/copper Cover 10 lb.in
Disconnect	Service disconnect (factory installed)

* Price is "List Price" and may be subject to a trade discount – check with your local distributor or retailer for actual price.

Jul 30, 2021

Disconnect Rating	200 A
Branch Breaker Rating	200 A
Service feed location	UG OH outdoor
Bypass type	No bypass
Width	18.76 in (476.50 mm)
Depth	5.41 in (137.41 mm)
Height	41.18 in (1045.97 mm)

Ordering and shipping details

Category	00148 - HOMELINE CSED DEVICES
Discount Schedule	DE3A
GTIN	00785901894414
Nbr. of units in pkg.	1
Package weight(Lbs)	61 lb(US) (27.67 kg)
Returnability	Yes
Country of origin	MX

Packing Units

Package 1 Height	0.56 ft (0.170 m)
Package 1 width	1.62 ft (0.493 m)
Package 1 Length	3.52 ft (1.072 m)

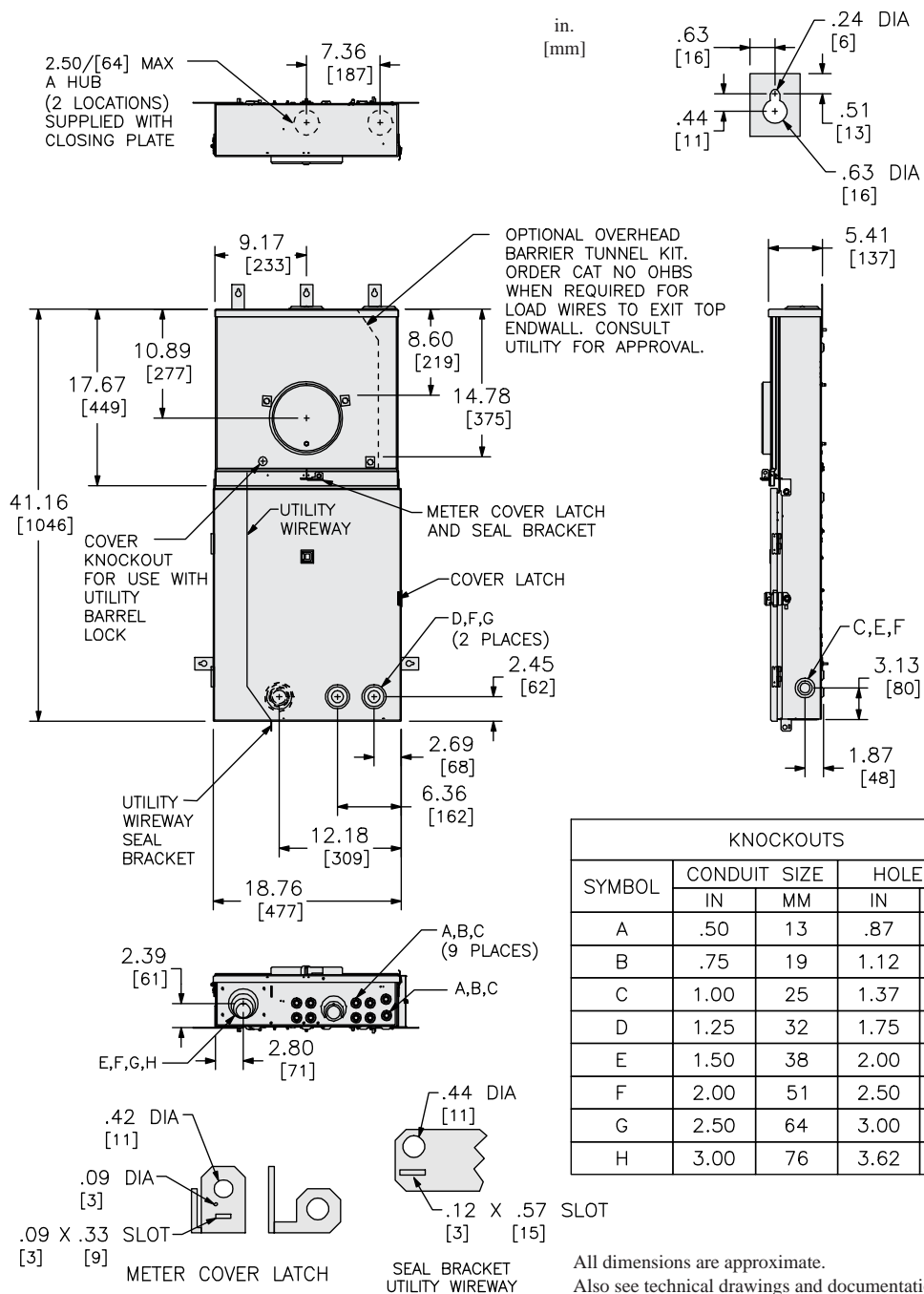
Offer Sustainability

California proposition 65	WARNING: This product can expose you to chemicals including: Lead and lead compounds, which is known to the State of California to cause cancer and birth defects or other reproductive harm. For more information go to www.P65Warnings.ca.gov
REACH Regulation	REACH Declaration
REACH free of SVHC	Yes
EU RoHS Directive	Compliant EU RoHS Declaration
Mercury free	Yes
RoHS exemption information	Yes
China RoHS Regulation	China RoHS declaration Product out of China RoHS scope. Substance declaration for your information.

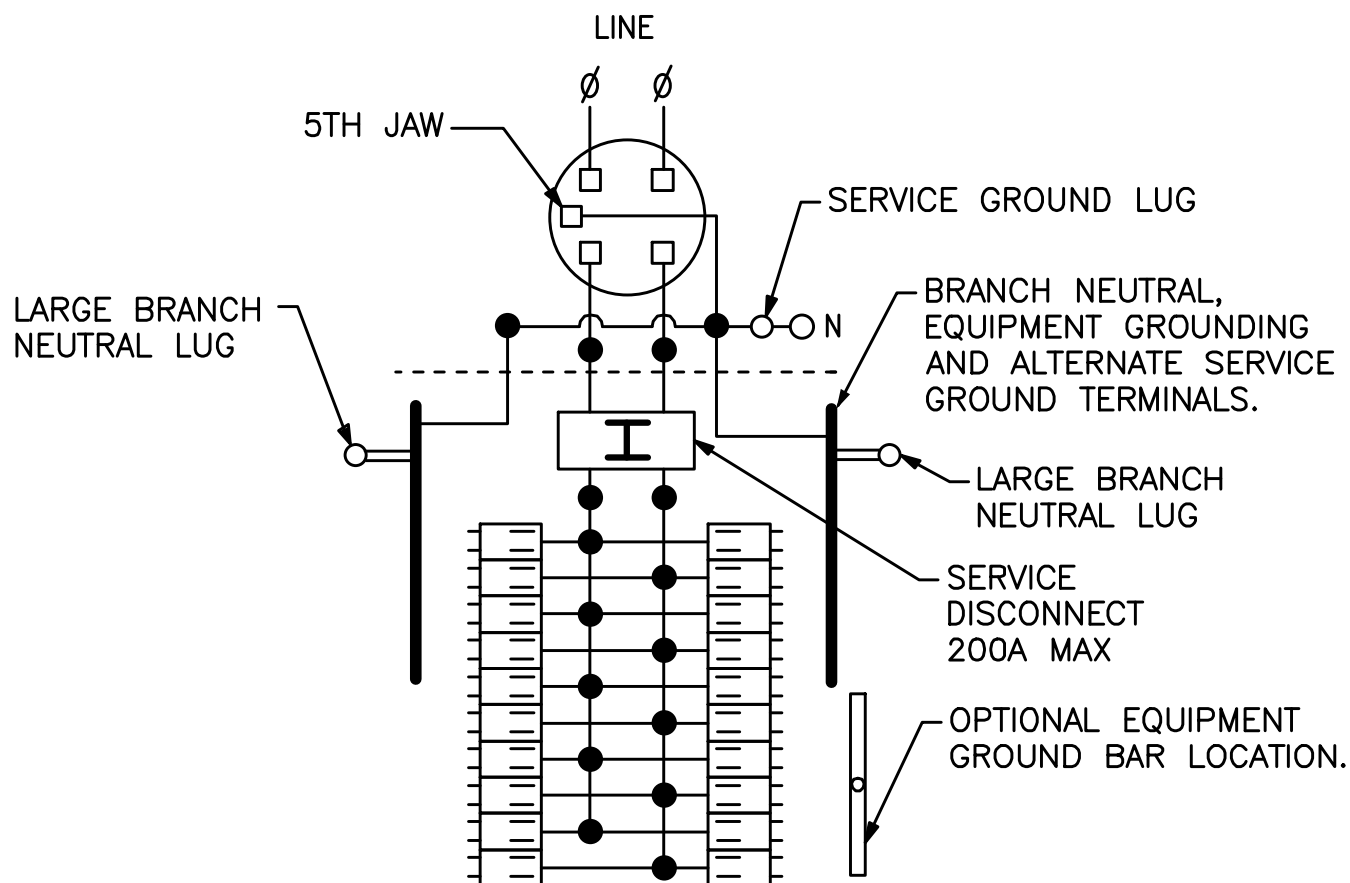
Contractual warranty

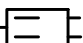
Warranty	18 months
----------	-----------

Dimensions



Wiring Diagram



●  TWO SINGLE POLE, ONE PLUG-ON SPACE TYPE HOMT OR ONE SINGLE POLE TYPE HOM. TWO POLE TYPE HOMT, HOM OR HOMA (125A MAX) MAY PLUG ON TWO ADJACENT SPACES. TWO POLE HOMA (150-200A) MAY PLUG ON FOUR ADJACENT SPACES.

TOTAL CIRCUIT BREAKER HANDLE RATING NOT TO EXCEED 160A PER CIRCUIT CONNECTOR.

A SQUARE D UL LISTED SECONDARY SURGE ARRESTER MAY PLUG ON TWO ADJACENT SPACES. ORDER CATALOG NO HOM2175SB.