

RC3040M200SLS

ALL-IN-ONE RINGLESS OH/ UG150ASURFACELEVS

Product availability : Stock - Normally stocked in distribution facility



Price* : 5,292.00 USD



Main

Product or component type	All-In-One
Range of product	QO
Meter socket type	Ringless
Hub type	A

Complementary

Line Rated Current	200 A
Short-circuit current	22 kA
Mounting	Surface
Number of spaces	30
Number of circuits	40
Number of Tandem Breakers	10
Electrical connection	Lugs line side Lugs service ground
Wire Size	AWG 6...350 kcmil aluminium/copper)line side AWG 8...AWG 2/0 aluminium/copper)service ground
Tightening torque	Main lugs 250 lb.in, AWG 6...350 kcmil, aluminium/copper Service ground 50 lb.in, AWG 3...AWG 2/0, aluminium/copper Service ground 45 lb.in, AWG 6...AWG 4, aluminium/copper Service ground 40 lb.in, AWG 8, aluminium/copper Branch lugs 35 lb.in, AWG 6...AWG 4, aluminium/copper Branch lugs 25 lb.in, AWG 8, aluminium/copper Branch lugs 20 lb.in, AWG 14...AWG 10, aluminium/copper Branch lugs 20 lb.in, AWG 12...AWG 10, aluminium/copper Cover 10 lb.in
Disconnect	Service disconnect (factory installed)
Disconnect Rating	200 A
Branch Breaker Rating	200 A

* Price is "List Price" and may be subject to a trade discount – check with your local distributor or retailer for actual price.

Service feed location	UG OH outdoor
Bypass type	Lever bypass
Width	18.35 in (466.09 mm)
Depth	6.05 in (153.67 mm)
Height	48.62 in (1234.95 mm)

Ordering and shipping details

Category	00148 - HOMELINE CSED DEVICES
Discount Schedule	DE3A
GTIN	00785901946441
Nbr. of units in pkg.	1
Package weight(Lbs)	76 lb(US) (34.47 kg)
Returnability	Yes

Packing Units

Package 1 Height	0.44 ft (0.135 m)
Package 1 width	1.53 ft (0.467 m)
Package 1 Length	4.06 ft (1.237 m)

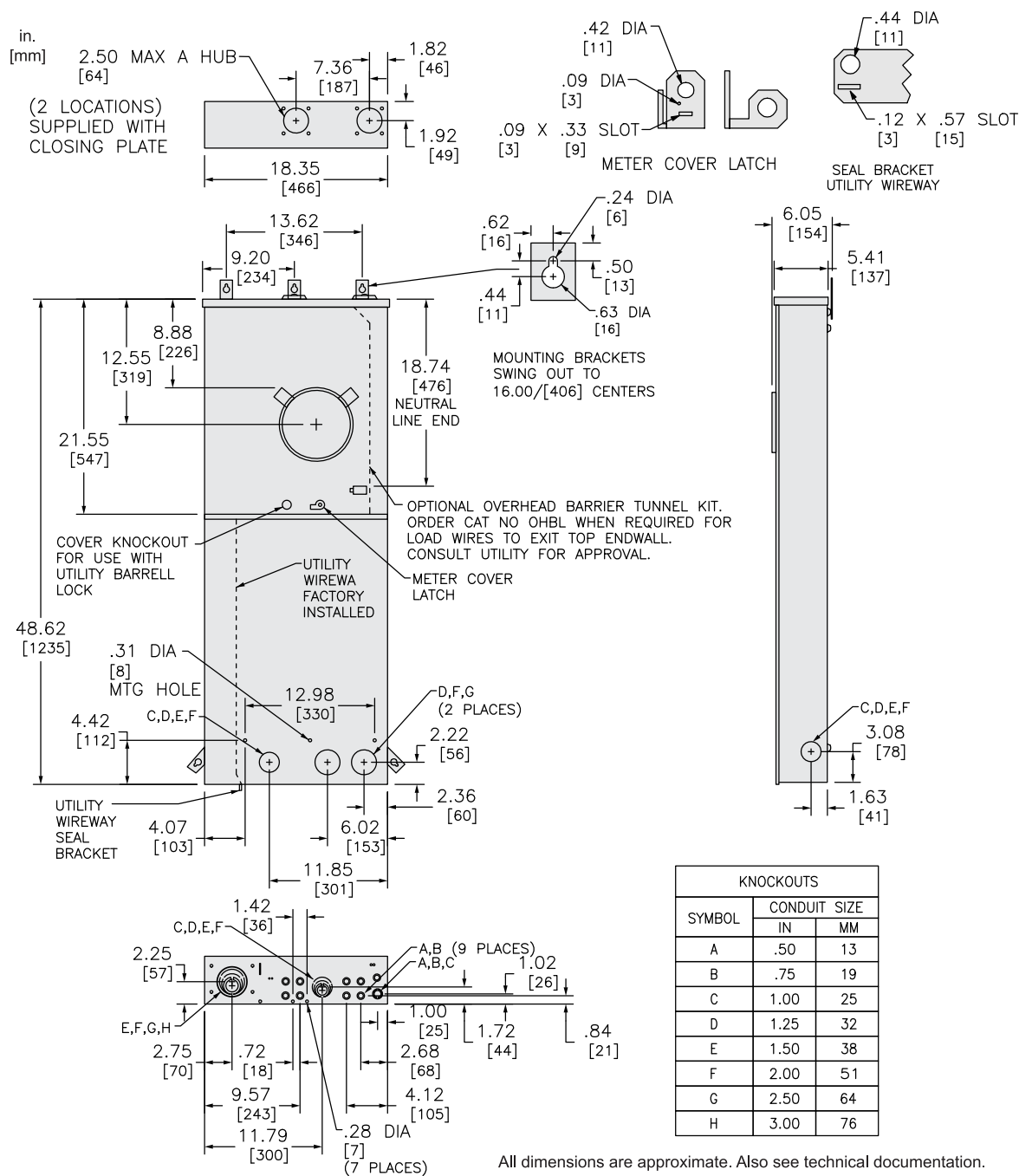
Offer Sustainability

Sustainable offer status	Green Premium product
California proposition 65	WARNING: This product can expose you to chemicals including: Lead and lead compounds, which is known to the State of California to cause cancer and birth defects or other reproductive harm. For more information go to www.P65Warnings.ca.gov
REACH free of SVHC	Yes
EU RoHS Directive	Compliant EU RoHS Declaration
Mercury free	Yes
RoHS exemption information	Yes
China RoHS Regulation	China RoHS declaration Product out of China RoHS scope. Substance declaration for your information.
Environmental Disclosure	Product Environmental Profile

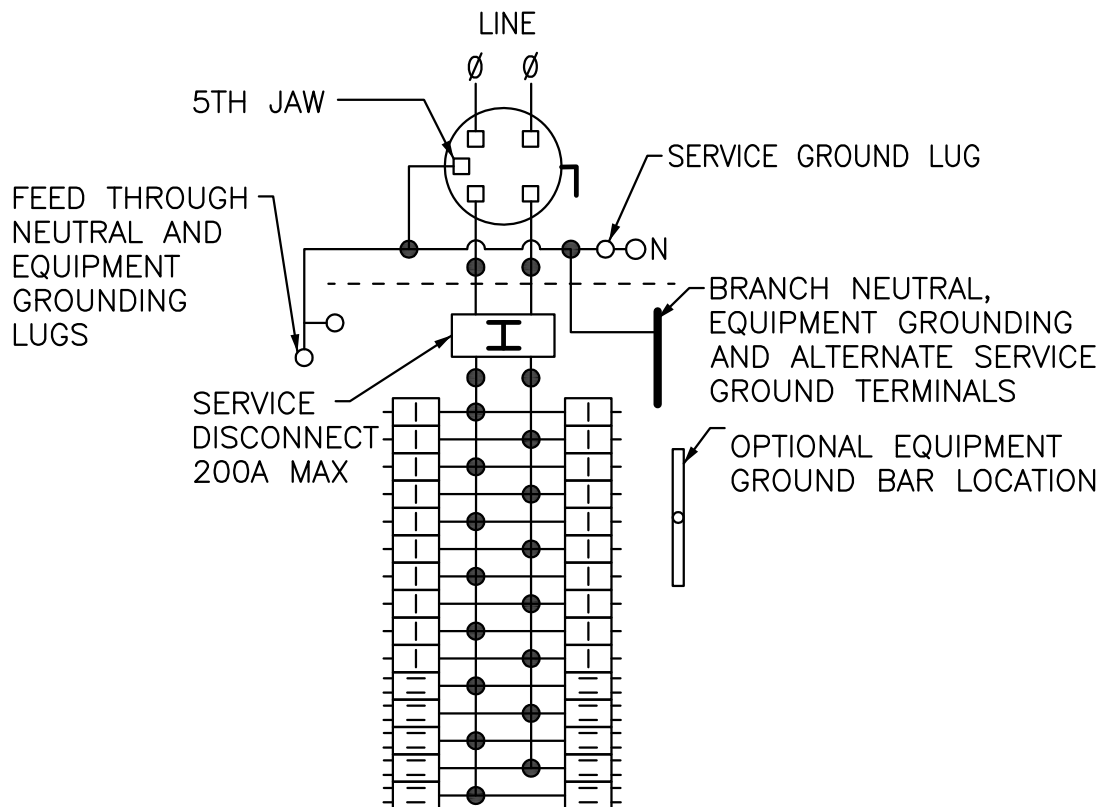
Contractual warranty


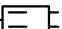
Warranty	18 months
----------	-----------

Dimensions



Wiring Diagram



-  ONE SINGLE POLE, ONE PLUG-ON SPACE TYPE HOM ONLY.
TWO POLE TYPE HOM OR HOMA (125A MAX) MAY PLUG ON TWO ADJACENT SPACES.
TWO POLE TYPE HOMA (150-200A) MAY PLUG ON FOUR ADJACENT SPACES.
-  TWO SINGLE POLE, ONE PLUG-ON SPACE TYPE HOMT OR ONE SINGLE POLE TYPE HOM.
TWO POLE TYPE HOMT, HOM OR HOMA (125A MAX) MAY PLUG ON TWO ADJACENT SPACES.
TWO POLE TYPE HOMA (150-200A) MAY PLUG ON FOUR ADJACENT SPACES.

TOTAL CIRCUIT BREAKER HANDLE RATING NOT TO EXCEED 160A PER CIRCUIT CONNECTOR.

A SQUARE D UL LISTED SECONDARY SURGE ARRESTER MAY PLUG ON TWO ADJACENT SPACES. ORDER CATALOG NO., HOM2175SB.