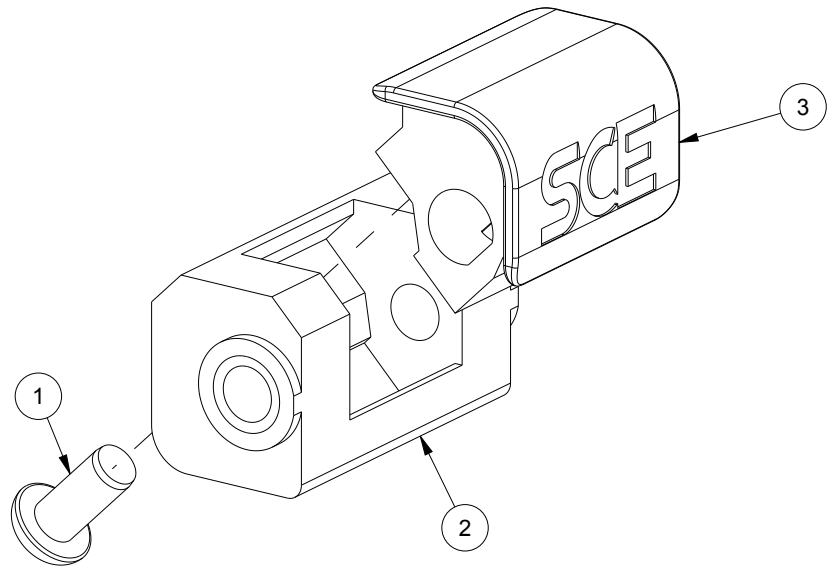
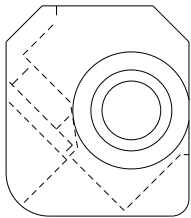
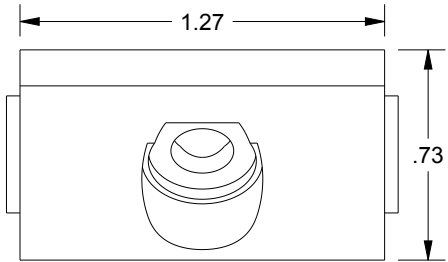
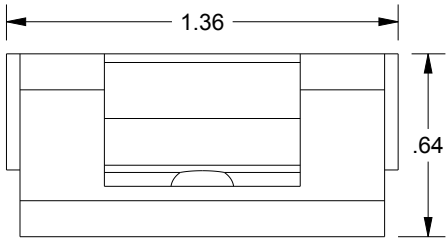
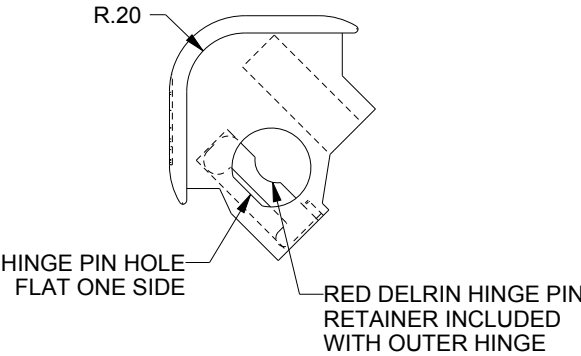
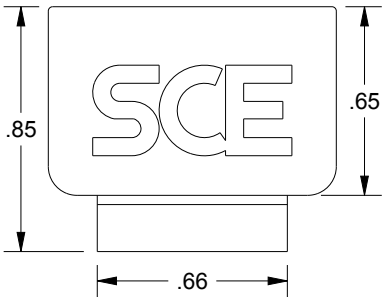
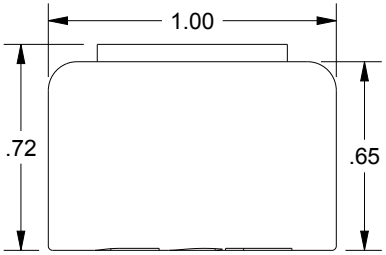
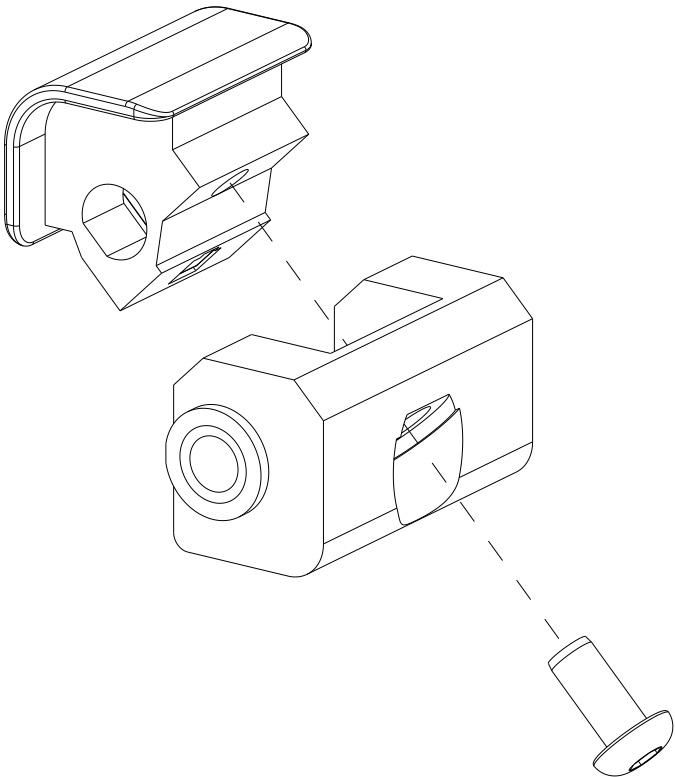


SAGINAW CONTROL & ENGINEERING

SCE-DHA12



BILL OF MATERIAL

ITEM	QTY	PART DESCRIPTION	PART I.D.
1	2	Screw, Button Head Torx, 10-32 X 3/8", Stainless Steel	102483
2	2	Inner Hinge, 1.36" x 0.73", Zamak 5 Zinc, Trivalent Cromate w/E-Seal	126393
3	2	Large Outer Hinge, 1.00" x 0.655", Zamak 5 Zinc, Trivalent Cromate w/E-Seal	128257