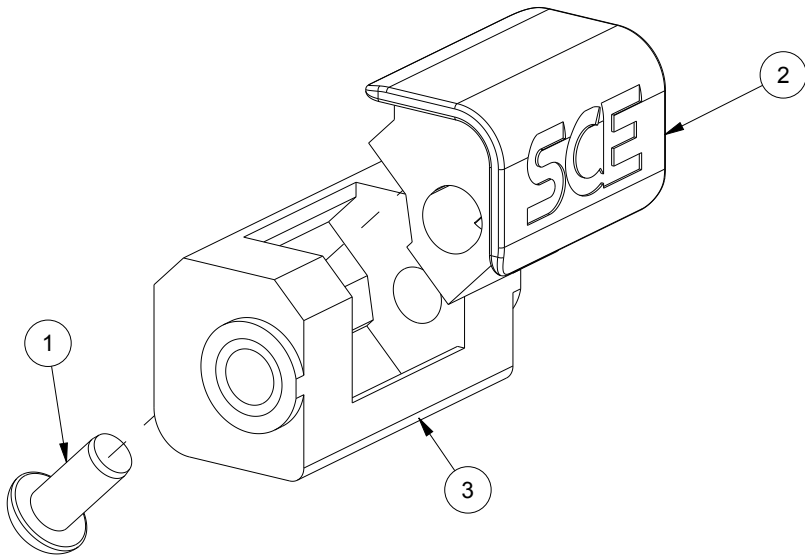
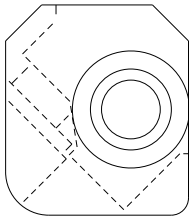
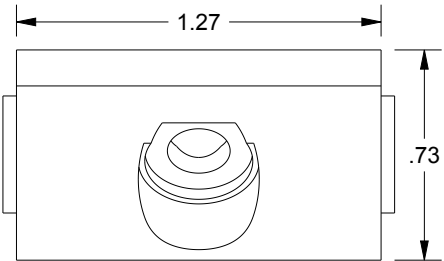
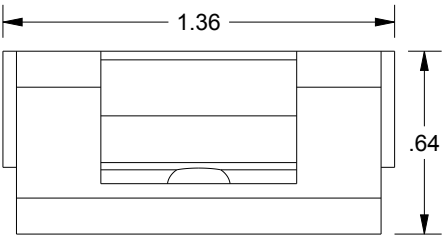
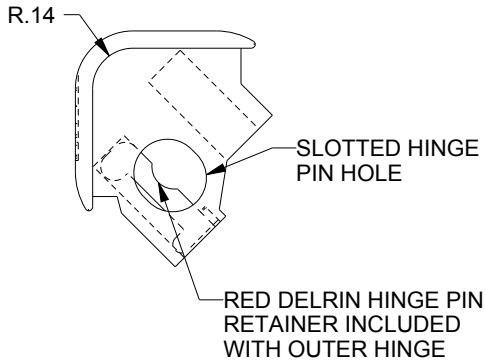
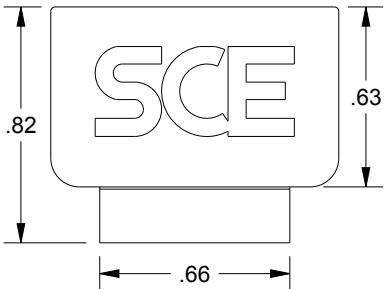
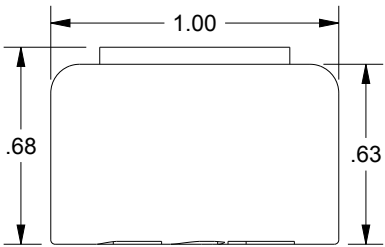
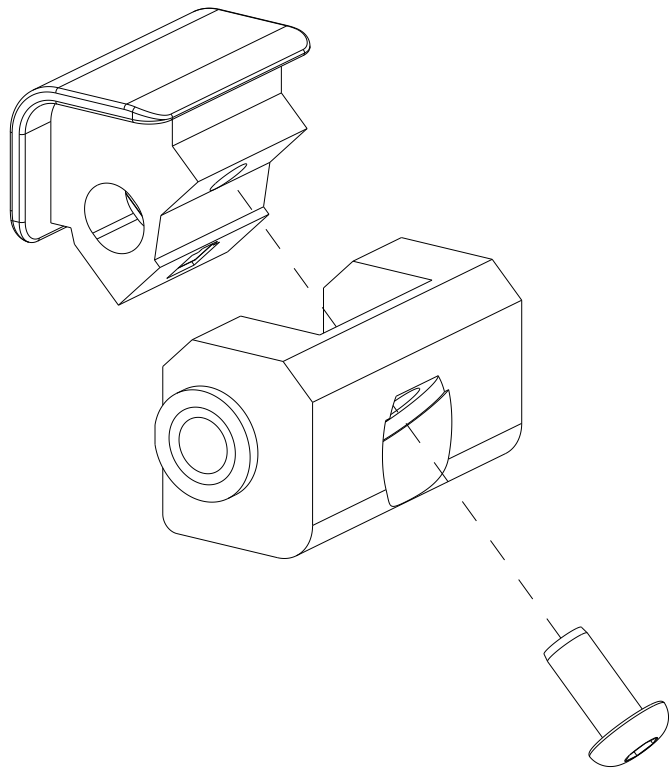


# SAGINAW CONTROL & ENGINEERING

## SCE-DHA14SS



### BILL OF MATERIAL

ITEM	QTY	PART DESCRIPTION	PART I.D.
1	2	Screw, Button Head Torx, 10-32 X 3/8", Stainless Steel	102483
2	2	Small Outer Hinge, 1.00" x 0.625", Polished Type 304 Stainless Steel	126392
3	2	Inner Hinge, 1.36" x 0.73", Passivated Type 304 Stainless Steel	126395