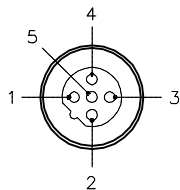


# MALE END VIEW

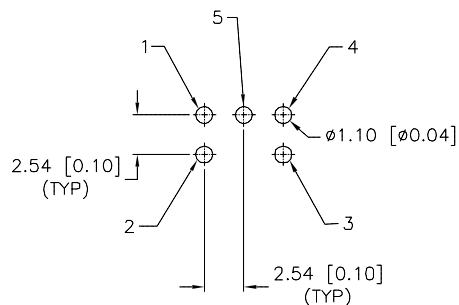


1 = BARE (SHIELD)  
2 = RED (+ VOLTAGE)  
3 = BLACK (- VOLTAGE)  
4 = WHITE (CAN\_H)  
5 = BLUE (CAN\_L)



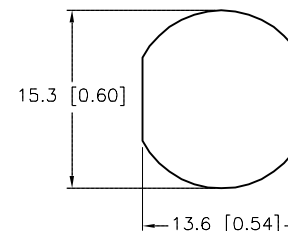
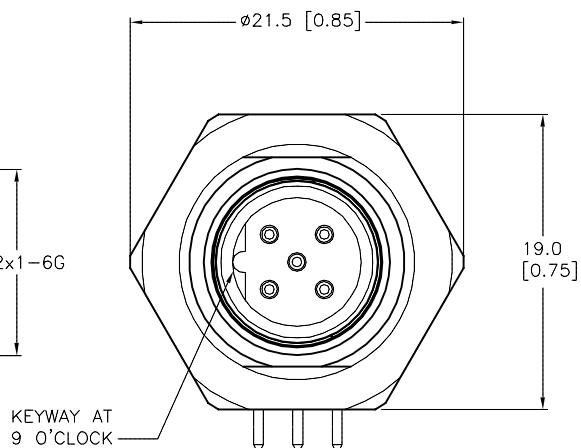
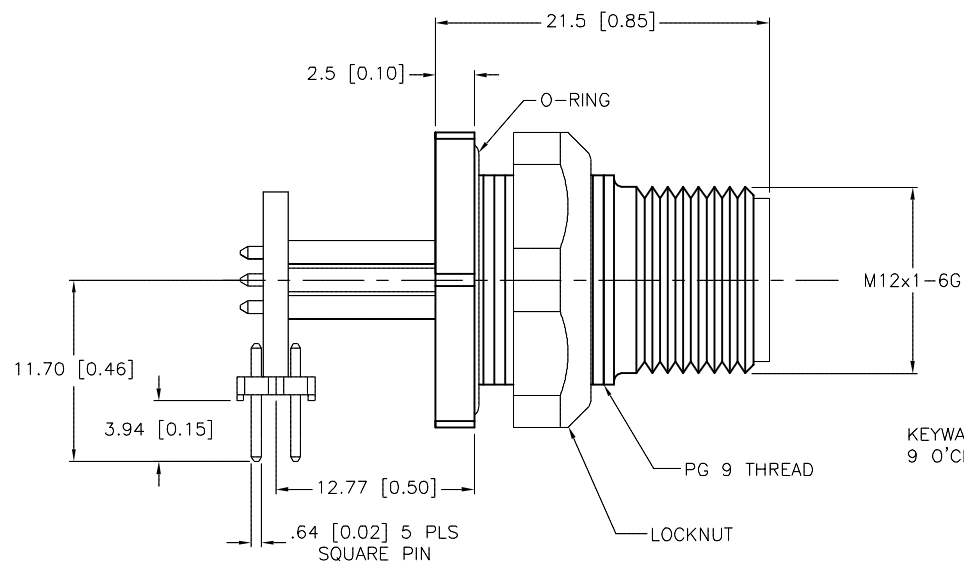
DeviceNet™

# BOARD LAYOUT (2:1)



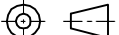
# SPECIFICATIONS

CONTACT CARRIER MATERIAL	NYLON
CONTACT MATERIAL/PLATING	BRASS/GOLD
RATED CURRENT [A]	2.5 A
RATED VOLTAGE [V]	250 V
HOUSING MATERIAL/PLATING	BRASS/NICKEL
TERMINAL PIN MATERIAL	PHOSPHOR BRONZE
TEMPERATURE RATING	-40°C to +90°C (-40°F to +194°F)
PROTECTION CLASS	MEETS NEMA 1,3,4,6P AND IEC IP67
MAX. PANEL THICKNESS	3.0 [0.12]



TYPICAL PANEL CUTOUT

SOURCE DRAWING - FOR REFERENCE ONLY

RELATED DOCUMENTS 1. 2. 3. 4.	3RD ANGLE PROJECTION	<div>THIS DRAWING IS CONFIDENTIAL AND THE PROPERTY OF TURCK INC. USE OF THIS DOCUMENT WITHOUT WRITTEN PERMISSION IS PROHIBITED.</div>		<div><div>TURCK INC</div><div>High Technology Sensors and Automation Controls</div><div>3000 CAMPUS DRIVE MINNEAPOLIS, MN 55441 1-800-544-7769 (763) 553-7300 (763) 553-0708 fax turck.com</div></div>		
						
MATERIAL	ALL DIMENSIONS DISPLAYED ON THIS DRAWING ARE FOR REFERENCE ONLY	DRFT	RDS	DATE	04/10/12	DESCRIPTION  WFSDW 57-PCBH
		APVD	B.R.	SCALE	2=1.0	
FINISH		CONTACT TURCK FOR MORE INFORMATION	UNIT OF MEASUREMENT  MILLIMETER [ INCH ]  DO NOT SCALE THIS DRAWING			IDENTIFICATION NO.  U2-20071
					FILE: U2-20071	SHEET 1 OF 1

A	DRAWING RELEASE	RDS	05/01/12	
REV	DESCRIPTION	BY	DATE	ECO. NO.