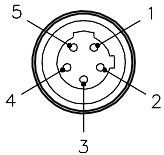

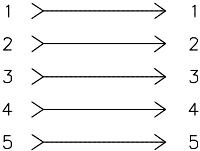
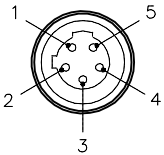

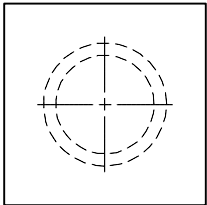
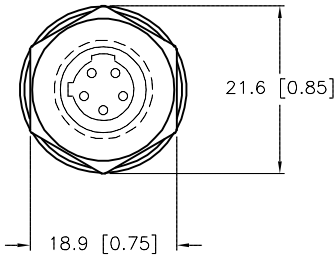
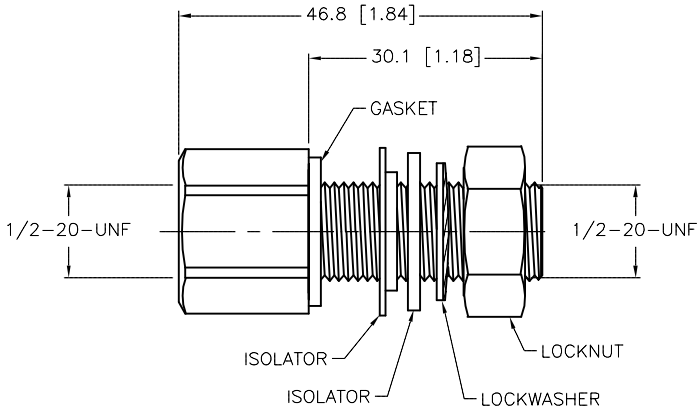
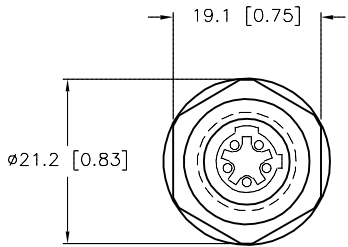


FEMALE END VIEW	WIRING DIAGRAM	MALE END VIEW	SPECIFICATIONS	
 		 	CONTACT CARRIER MATERIAL/COLOR	NYLON/BLACK
			CONTACT MATERIAL/PLATING	BRASS/GOLD
			HOUSING MATERIAL/FINISH	STAINLESS STEEL/PASSIVATED
			RATED CURRENT [A]	4.0 A
			RATED VOLTAGE [V]	250 V
			TEMPERATURE RANGE	-40°C to +105°C (-40°F to +221°F)
			GASKET MATERIAL	NITRILE (BUNA N)
			ISOLATOR MATERIAL	NYLON
			PROTECTION CLASS	NEMA 1,3,4,6P AND IEC IP67, IP68, IP69K



PANEL CUT-OUT
SEE NOTES

SOURCE DRAWING - FOR REFERENCE ONLY

NOTES:

1. TYPICAL PANEL CUT-OUT USING ISOLATORS IS 0.625 DIA. HOLE.
2. TYPICAL PANEL CUT-OUT WITHOUT ISOLATORS IS 0.50 DIA. HOLE.

B	UPDATE PROTECTION CLASS	*CK	06/28/10	31556	SEE SPECIFICATIONS	FOR MORE INFORMATION	DO NOT SCALE THIS DRAWING	U2-14361		B
REV	DESCRIPTION	BY	DATE	ECO NO.				FILE: U2-14361	SHEET 1 OF 1	