

MALE END VIEW

1 = (SHIELD)
2 = (+ VOLTAGE)
3 = (- VOLTAGE)
4 = (CAN_H)
5 = (CAN_L)

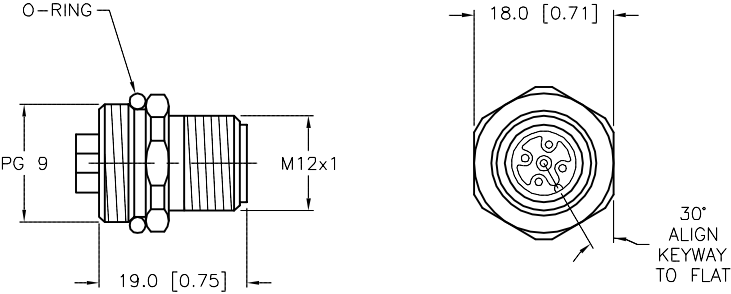
DeviceNetTM

PG9 LOCKNUT

PG 9 LOCKNUT
(INCLUDED)

SPECIFICATIONS


CONTACT CARRIER MATERIAL/COLOR	NYLON OR TPU/BLUE-GRAY
CONTACT MATERIAL/PLATING	BRASS/GOLD
RATED CURRENT [A]	4.0 A
RATED VOLTAGE [V]	250 V
HOUSING MATERIAL/PLATING	BRASS/NICKEL
CONDUCTORS	SOLDER CUPS, 20 AWG MAX
TEMPERATURE RATING	-40°C to +90°C (-40°F to +194°F)
PROTECTION CLASS	MEETS NEMA 1,3,4,6P AND IEC IP68



NOTES:

1. "W/LN" DESIGNATES LOCKNUT INCLUDED WITH RECEPTACLE.

SOURCE DRAWING - FOR REFERENCE ONLY

NOTES: 1. "W/LN" DESIGNATES LOCKNUT INCLUDED WITH RECEPTACLE.	RELATED DOCUMENTS				3RD ANGLE PROJECTION		THIS DRAWING IS CONFIDENTIAL AND THE PROPERTY OF TURCK INC. USE OF THIS DOCUMENT WITHOUT WRITTEN PERMISSION IS PROHIBITED.		3000 CAMPUS DRIVE MINNEAPOLIS, MN 55441 1-800-544-7769 (763) 553-7300 (763) 553-0708 fax www.turck.us	
	MATERIAL						DRFT RDS		DATE 07/05/07	
							APVD		SCALE 1 = 1.0	
	FINISH				ALL DIMENSIONS DISPLAYED ON THIS DRAWING ARE FOR REFERENCE ONLY		UNIT OF MEASUREMENT MILLIMETER [INCH]		DESCRIPTION FS 57 W/LN	
									CONTACT TURCK FOR MORE INFORMATION	
	B		DRAWING PROCESSED AS PART OF ECO 33971		CBM	04/07/11	33971		REV B	
	REV		DESCRIPTION		BY	DATE	ECO NO.		SHEET 1 OF 1	
									FILE: U3-10615	