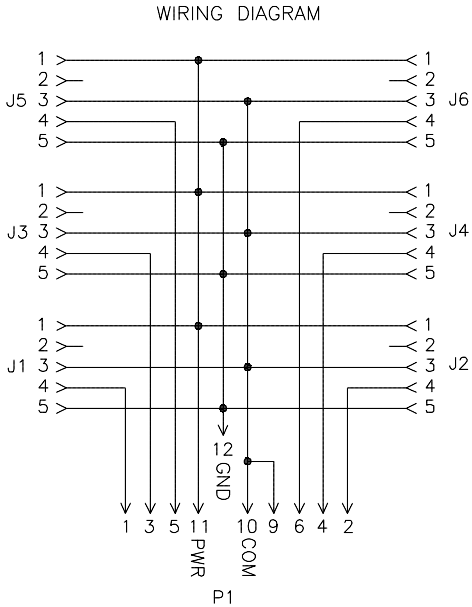
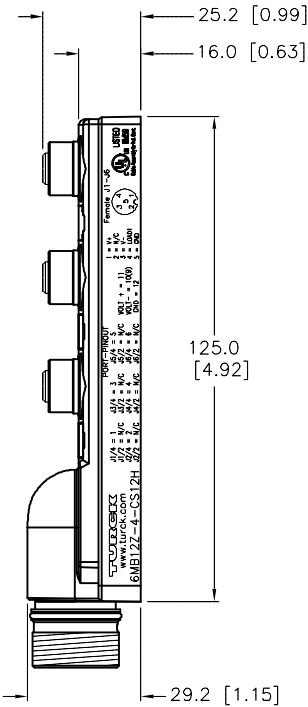
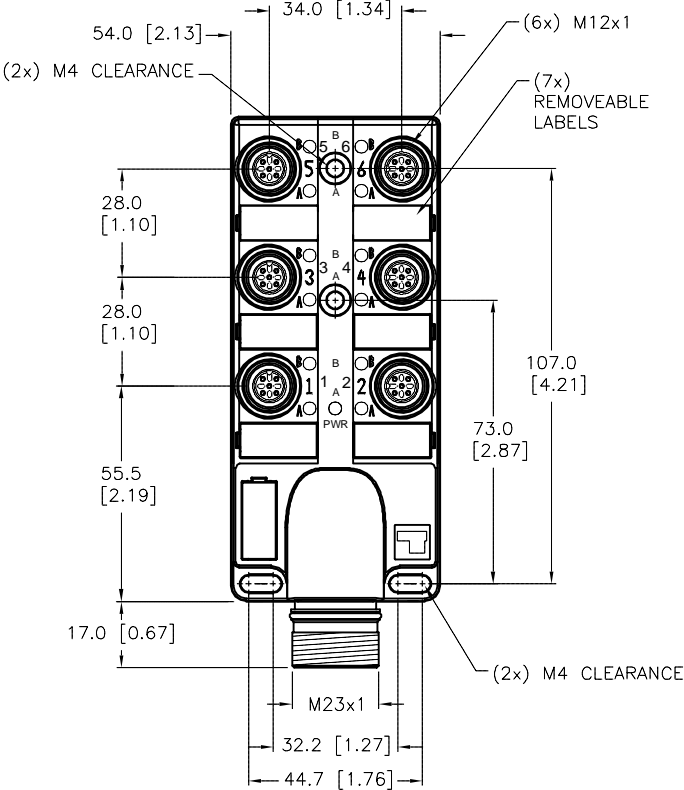
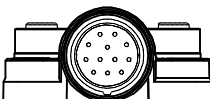




SPECIFICATIONS	
HOUSING MATERIAL/COLOR	NYLON/BLACK
RECEPTACLE MATERIAL/PLATING	BRASS/NICKEL
CONTACT CARRIERS	NYLON
CONTACT CARRIER MATERIAL/PLATING	BRASS/GOLD
O-RING MATERIAL	NBR (P1), VITON (J1-J6)
OPERATING VOLTAGE	250 VDC
OPERATING CURRENT	4.0 AMPS/SIGNAL, 9.0 AMPS TOTAL
PROTECTION CLASS	IP67,IP69K; ONLY WHEN ALL RECEPTACLES ARE COVERED WITH PLUGS OR CONNECTED
OPERATING TEMPERATURE	-40°C to +85°C (-40°F to +185°F)



SOURCE DRAWING - FOR REFERENCE ONLY

					RELATED DOCUMENTS		3RD ANGLE PROJECTION		THIS DRAWING IS CONFIDENTIAL AND THE PROPERTY OF TURCK INC. USE OF THIS DOCUMENT WITHOUT WRITTEN PERMISSION IS PROHIBITED.				3000 CAMPUS DRIVE MINNEAPOLIS, MN 55441 1-800-544-7769 (763) 553-7300 (763) 553-0708 fax www.turck.us	
					1. 2. 3. 4.									
					MATERIAL		ALL DIMENSIONS DISPLAYED ON THIS DRAWING ARE FOR REFERENCE ONLY		DRFT		RDS	DATE	08/06/12	
SEE SPECIFICATIONS		APVD		J.S.	SCALE	1=2								
FINISH		CONTACT TURCK FOR MORE INFORMATION		UNIT OF MEASUREMENT				IDENTIFICATION NO.		REV				
SEE SPECIFICATIONS				MILLIMETER [INCH]				U2-19918		E				
DO NOT SCALE THIS DRAWING		FILE: U2-19918				SHEET 1 OF 1								
E	UPDATED VOLTAGE AND AMP RATINGS PER ECO			TV	08/24/17	57007								
REV	DESCRIPTION			BY	DATE	ECO NO.								