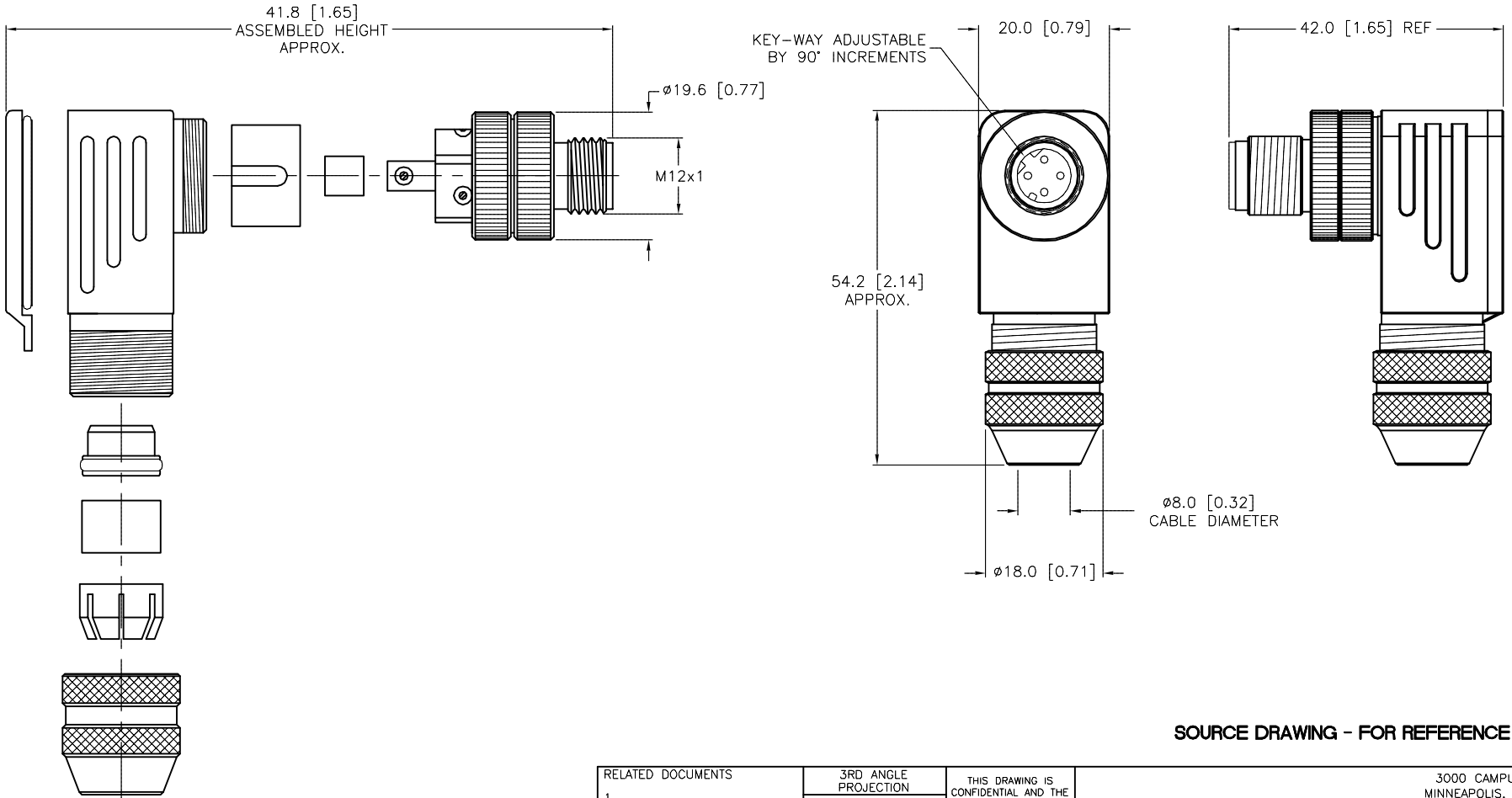


MALE END VIEW





SPECIFICATIONS	
CONTACT MATERIAL/PLATING	BRASS/GOLD
HOUSING MATERIAL/PLATING	BRASS/NICKEL
RATED CURRENT [A]	4.0 A
RATED VOLTAGE [V]	250 V
MAXIMUM WIRE SIZE	20 AWG
CABLE GRIP RANGE	6–8mm
TEMPERATURE RATING	–40°C to +85°C (–40°F to +185°F)
PROTECTION CLASS	IEC IP67
WIRE TERMINATION	SCREW TERMINAL



NOTES:

1. ALL METAL SHIELDED FIELD WIREABLE CONNECTOR.

SOURCE DRAWING - FOR REFERENCE ONLY

B	UPDATE END VIEWS	RDS	12/19/18	67861
REV	DESCRIPTION	BY	DATE	ECO NO.

RELATED DOCUMENTS	3RD ANGLE PROJECTION	THIS DRAWING IS CONFIDENTIAL AND THE PROPERTY OF TURCK INC. USE OF THIS DOCUMENT WITHOUT WRITTEN PERMISSION IS PROHIBITED.	3000 CAMPUS DRIVE MINNEAPOLIS, MN 55441 1-800-544-7769 (763) 553-7300 (763) 553-0708 fax www.turck.us		
1.			TURCK		
2.					
3.	ALL DIMENSIONS DISPLAYED ON THIS DRAWING ARE FOR REFERENCE ONLY		DESCRIPTION CMBSD 8241-0/PG9		
4.					
MATERIAL	CONTACT TURCK FOR MORE INFORMATION	DRFT	RWC	DATE	10/27/06
SEE SPECIFICATIONS		APVD		SCALE	1=1.0
FINISH	UNIT OF MEASUREMENT MILLIMETER [INCH]	IDENTIFICATION NO.		REV	
SEE SPECIFICATIONS		U2-03888		B	
		DO NOT SCALE THIS DRAWING		FILE: U2-03888	
				SHEET 1 OF 1	