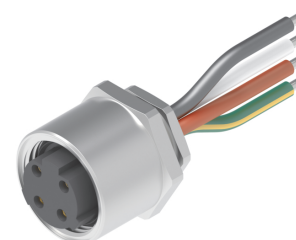
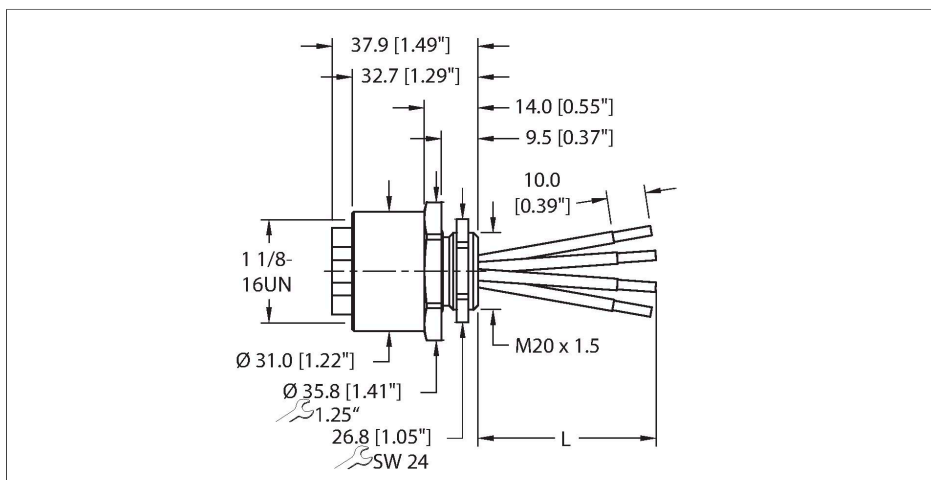


RKFC 42-0.5M/M20

Power Receptacle – Front Mount



Technical data

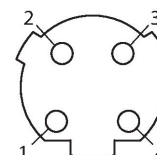
Type	RKFC 42-0.5M/M20
ID no.	UX17229
Connector A	Female, 1 1/8"
Number of Pins	4
Contacts	Brass, CuZn, Gold-plated
Contact carriers	Plastic, PVC, Black
Housing material/finish	Brass, CuZn, Nickel-plated
Mounting orientation	Front mount
Mounting thread	M20x1.5
Locknut	Brass, CuZn, Nickel-plated
Protection class (When coupled)	IP67, IP68
	NEMA: 1, 3, 4, 6P
Stranded wires	
Cable length (L)	0.5 m (+50mm or 4% of length/-0.0, Whichever is greater)
Conductor material	TC (tinned copper)
Conductor insulation material	XLPE
Conductor size	12 AWG [Similar to 4.00 mm ²]
Conductor colors	BK, WH, RD, GN/YL
Electrical properties at +20 °C	
Rated voltage	600 VAC
Current	25 A
Mechanical and chemical properties	
Ambient temperature range (static)	-40 °C...+105 °C

Features

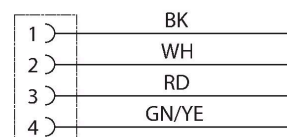
- 1 1/8" minifast, Female, Receptacle, Front mount, 4-pin
- Conductor length: 0.5 m

Contact assignment

Connector A



Circuit Diagram



Technical data

Approval

Note

- CAUTION: RISK OF ELECTRICAL SHOCK. DO NOT DISCONNECT UNDER LOAD.

- We reserve the right to make technical alterations without prior notice.

Front panel mounting

