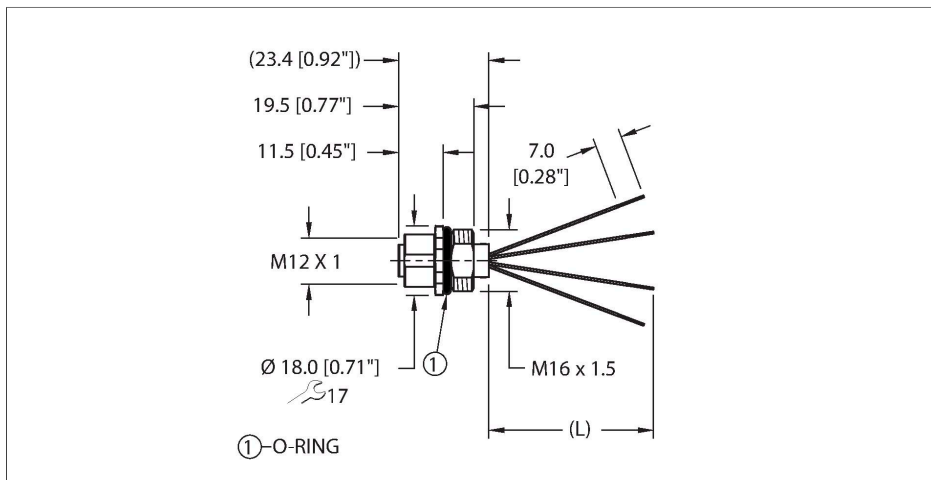


FK46PS-0.2/M16

Power Receptacle – Front Mount



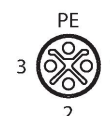
Features



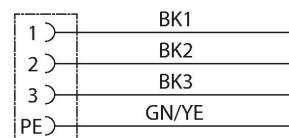
- M12-Kupplung, S-codiert, 3-polig + PE
- Conductor length: 0.2 m

Contact assignment

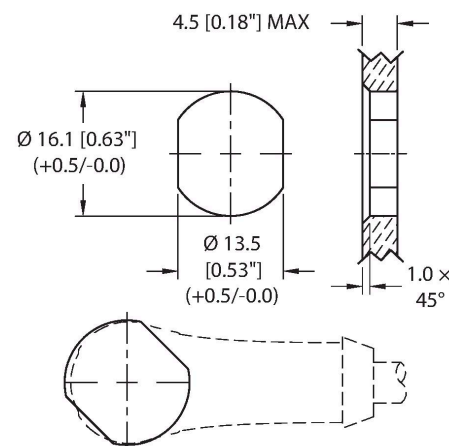
Connector A



Circuit Diagram



Mounting hole - Through



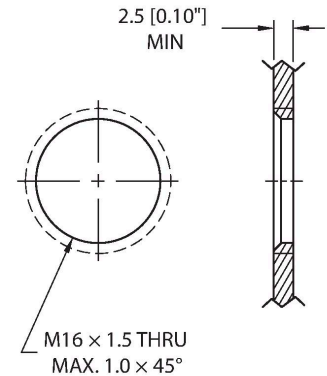
Technical data

| | |
|---------------------------------|--|
| Type | FK46PS-0.2/M16 |
| ID no. | U2-28508 |
| Connector A | Female, M12 × 1, S-code |
| Design specification | Acc. to IEC 61076-2-111 |
| Number of Pins | 3+PE |
| Contacts | Brass, CuZn, Gold-plated |
| Contact carriers | Plastic, PA, Black |
| Connector seal | O-ring, Plastic, FKM/FPM |
| Housing material/finish | Brass, CuZn, Nickel-plated |
| Tightening torque (range) | 0.4 ... 1 Nm (note max. torque of mating connector!) |
| Mounting orientation | Front mount |
| Panel seal | O-ring, NBR |
| Mounting thread | M16x1.5 |
| Receptacle mounting torque | 2.5...7.3 Nm |
| Mechanical life | > 100 Mating cycles |
| Pollution degree | 3 |
| Protection class (When coupled) | IP68 |
| | NEMA: 1, 3, 4, 6P |
| Stranded wires | |
| Total number of conductors | 4 |
| Cable length (L) | 0.2 m (+50mm or 4% of length/-0.0, Whichever is greater) |
| Conductor material | TC (tinned copper) |

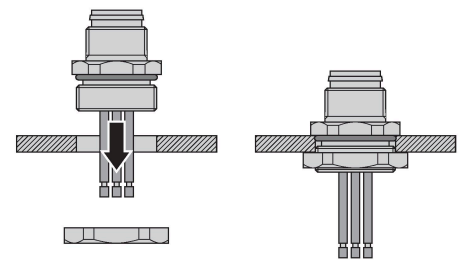
Technical data

| | |
|--|---|
| Conductor insulation material | PVC |
| Conductor size | 4 x 16 AWG [Similar to 1.50 mm ²] |
| Conductor colors | BK1, BK2, BK3, GNYE |
| Electrical properties at +20 °C | |
| Rated voltage | 630 V |
| Current | 12 A |
| Mechanical and chemical properties | |
| Ambient temperature range (static) | -40 °C...+85 °C |
| Approval | |
| Note | |
| - CAUTION: RISK OF ELECTRICAL SHOCK. DO NOT DISCONNECT UNDER LOAD. | |
| - The standard mating right angled cordset will dress perpendicular to the flats of the mounting hole. | |
| - We reserve the right to make technical alterations without prior notice. | |

Mounting hole - Threaded



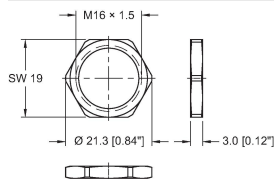
Front panel mounting



Accessories

LOCKNUT-M16 (10/BAG)

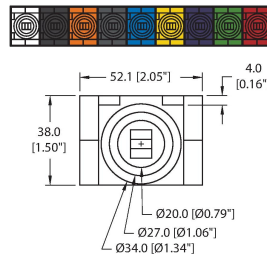
A9579



Locknut, M16, Brass, Nickel-plated, 10 per bag

DECAL,9-CLRS,RECEPT+BOXES,EURO(QTY1)

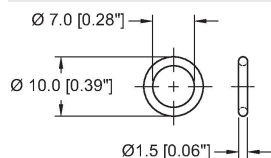
100008955



1 decal sticker containing 9 different color sets of 11 decals to color code a sensor, junction block port, cable end, or receptacle. 5ct 4x9mm rectangles, 4ct 8x19mm rectangles, 1ct 27mm ID ring, 1ct 20mm ID ring.

ORING-Ø7x1.5-M12-(10/BAG)

100024937



10 pack of Ø7x1.5 FKM O-rings for female M12 connectors