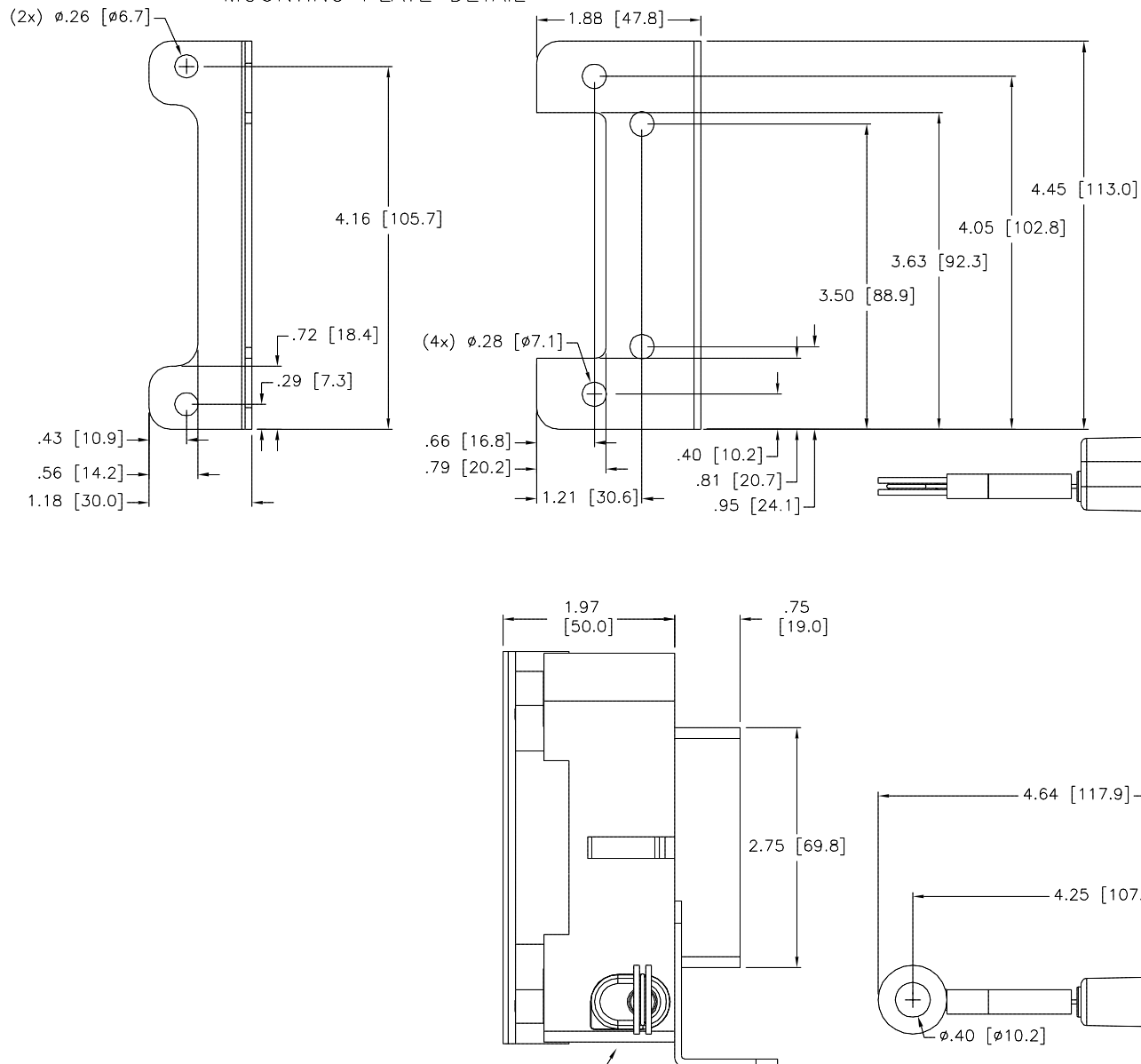


MOUNTING PLATE DETAIL



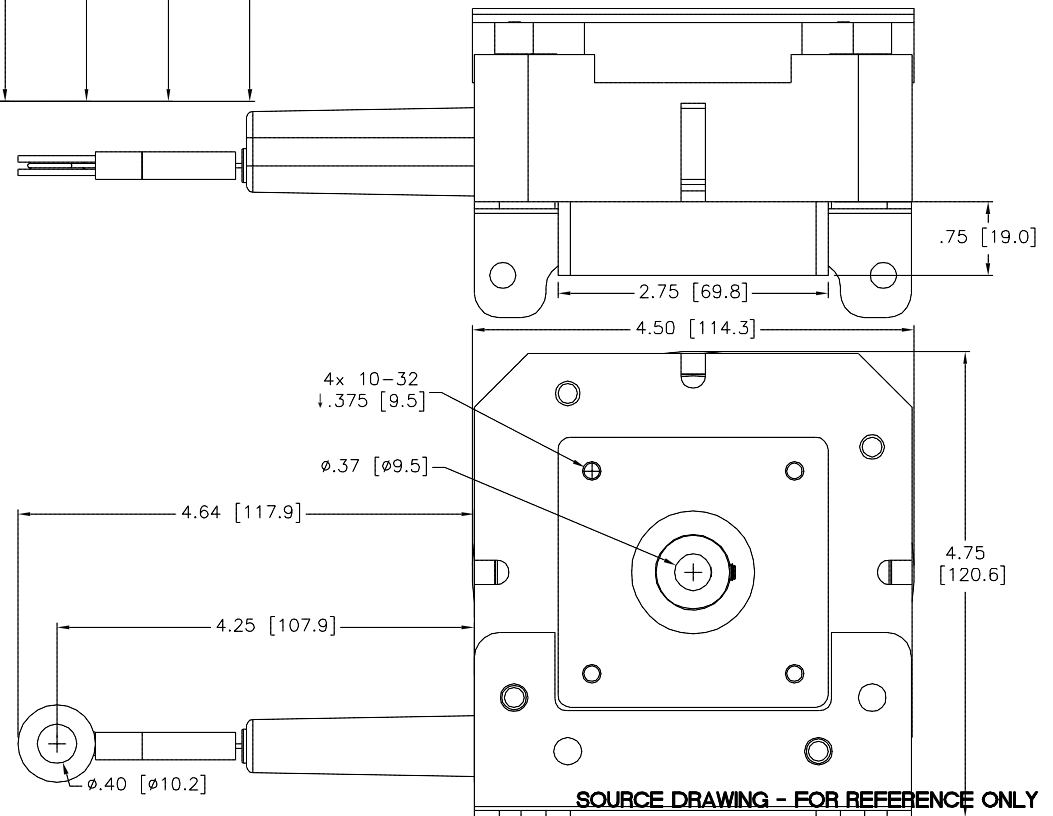
DRAW WIRE

NOTE:

1. ALL DIMENSIONS ARE REFERENCE.
2. DRAW WIRE CAN BE INDEXED ON THE MOUNTING PLATE FOR CABLE EXIT: LEFT, RIGHT, OR UP.
3. 4x 10-32 x 0.50" SOCKET HEAD CAP SCREWS TO MOUNT ENCODER INCLUDED IN SCOPE OF SUPPLY.

DRAW WIRE SPECIFICATIONS

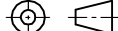
MEASURING RANGE	0 - 3000MM
MAXIMUM VELOCITY	80" PER SECOND
MAXIMUM ACCELERATION	10G (RETRACTION)
MEASURING CABLE TENSION	23.0 \pm 30% OZ.
DRUM CIRCUMFERENCE	12.0" \pm 0.020 IN/REV
MEASURING CABLE DIAMETER	0.044"
OPERATING TEMPERATURE RANGE	-20 TO +85C (-4 TO +185F)
HOUSING MATERIAL	POLYCARBONATE/ALUMINUM
MEASURING CABLE MATERIAL	NYLON-COATED STAINLESS
MECHANICAL LIFE OF CABLE	1.3 MILLION CYCLES (1 CYCLE = 1 EXTENSION + 1 RETRACTION)



SOURCE DRAWING - FOR REFERENCE ONLY

NOTE:

1. ALL DIMENSIONS ARE REFERENCE.
2. DRAW WIRE CAN BE INDEXED ON THE MOUNTING PLATE FOR CABLE EXIT: LEFT, RIGHT, OR UP.
3. 4x 10-32 x 0.50" SOCKET HEAD CAP SCREWS TO MOUNT ENCODER INCLUDED IN SCOPE OF SUPPLY.

RELATED DOCUMENTS		3RD ANGLE PROJECTION		THIS DRAWING IS CONFIDENTIAL AND THE PROPERTY OF TURCK INC. USE OF THIS DOCUMENT WITHOUT WRITTEN PERMISSION IS PROHIBITED.		<div>TURCK INC</div> <div>High Technology Sensors and Automation Controls</div> <div>3000 CAMPUS DRIVE MINNEAPOLIS, MN 55441 1-800-544-7769 (763) 553-7300 (763) 553-0708 fax turck.com</div>			
1.			DRFT	NF	DATE	03/06/15	DESCRIPTION DW3000-152-R		
2.			APVD	K.H.	SCALE	1=2.0			
3.			UNIT OF MEASUREMENT					IDENTIFICATION NO. 1562121 (SOURCE)	REV A
4.			INCH [MILLIMETER]						
MATERIAL		ALL DIMENSIONS DISPLAYED ON THIS DRAWING ARE FOR REFERENCE ONLY	DO NOT SCALE THIS DRAWING				FILE: 1562121	SHEET 1 OF 1	
SEE SPECIFICATIONS									
FINISH			CONTACT TURCK FOR MORE INFORMATION						
SEE SPECIFICATIONS									

A	DRAWING RELEASE	NF	03/11/15	
REV	DESCRIPTION	BY	DATE	ECO NO.