



# Solenoid Valve Connectors

## Form B Solenoid Valve Field Connectors



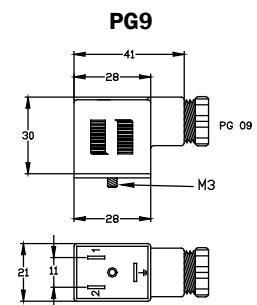
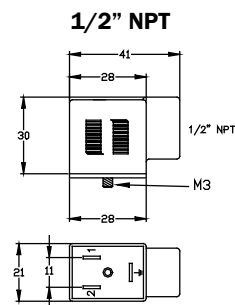
Form B | Industry Standard | Field Wireable Plugs | Cordsets | IP65 Rating

# of Poles	Voltage	Circuitry	Field Wireable		Cordsets		
			1/2" NPT Conduit	PG 9 6 to 8 mm	2 M	5 M	10 M
2 + Ground	250V AC/DC (Maximum)	None	N/A	VJN-029-00 (Gray)	VDN-220-00	VDN-520-00	VDN-A20-00
			VDN-022-00 (Black)	VDN-029-00* (Black)			
	10-50V DC	LED w/ Flyback Diode	VDC-022-00 (Clear)	VDC-029-00 (Clear)	VDC-220-00	VDC-520-00	VDC-A20-00
	24V AC/DC	LED w/ MOV	VDG-022-00 (Clear)	VDG-029-00 (Clear)	VDG-220-00	VDG-520-00	VDG-A20-00
	110V AC/DC	LED w/ MOV	VDJ-022-00 (Clear)	VDJ-029-00 (Clear)	VDJ-220-00	VDJ-520-00	VDJ-A20-00

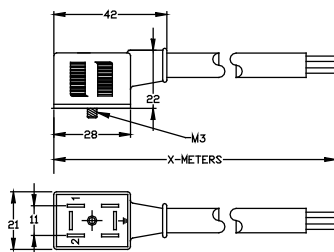
\* UL Recognized

Two standard orientations are available for the VDC, VDG and VDJ cordset versions. Please refer to the part number system shown above each drawing. The ground position is not applicable for field wireable versions.

Valve Pin #	Color Code
1	Brown
2	Blue
Ground	Green/Yellow

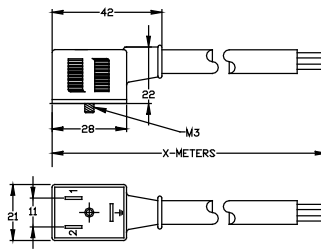


VDN-x2x-00



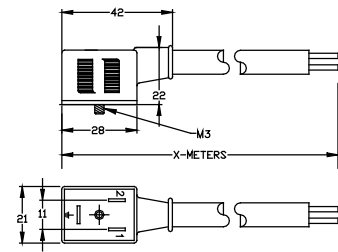
2 Poles + Ground  
(Dual Ground)

Vxx-x2x-00



2 Poles + Ground  
(Ground Cable Side)

Vxx-x8x-00



2 Poles + Ground  
(Ground Opposite Cable Side)

### Field Wireable Specifications:

Body: Polyamide  
Contacts: Copper Alloy with Silver Plating  
Insert: Polyamide  
Gasket: Thermoplastic  
Screw: Zinc Plated Steel  
Cable O.D.: PG 9 - 6 to 8 mm  
Temperature: Gray & Black: -40°C to 125°C (-40°F to +257°F)  
Clear: -25°C to 90°C (-13°F to 194°F)

### Cordset Version Specifications:

Body: TPE  
Contacts: Copper Alloy with Silver Plating  
Insert: Polyamide  
Gasket: Built-in TPE  
Screw: Zinc Plated Steel  
Cable: Black PVC  
2 Pole: 3x18 AWG; Cable O.D.: 0.26"  
Temperature: -25°C to 90°C (-13°F to 194°F)