

PIN #	COLOR
1	BROWN
2	BLUE
3	GREEN / YELLOW

REVISIONS		
REV.	DESCRIPTION	DATE
A	REDRAWN IN SW	3/18/2005
B	ORIENTATION CHANGE	11/10/2005

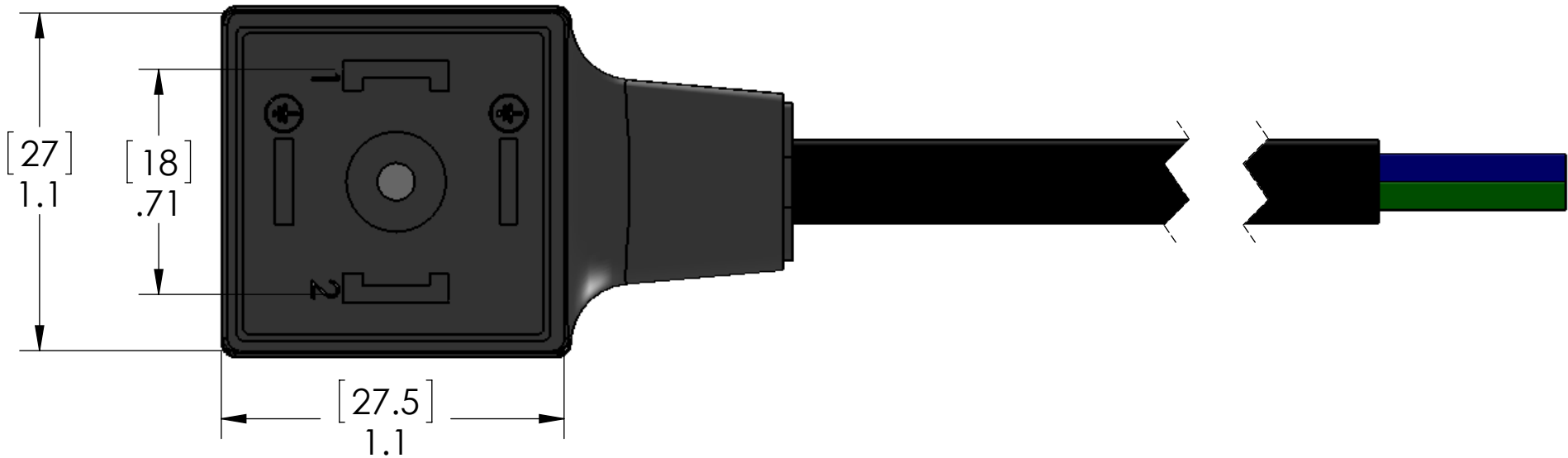
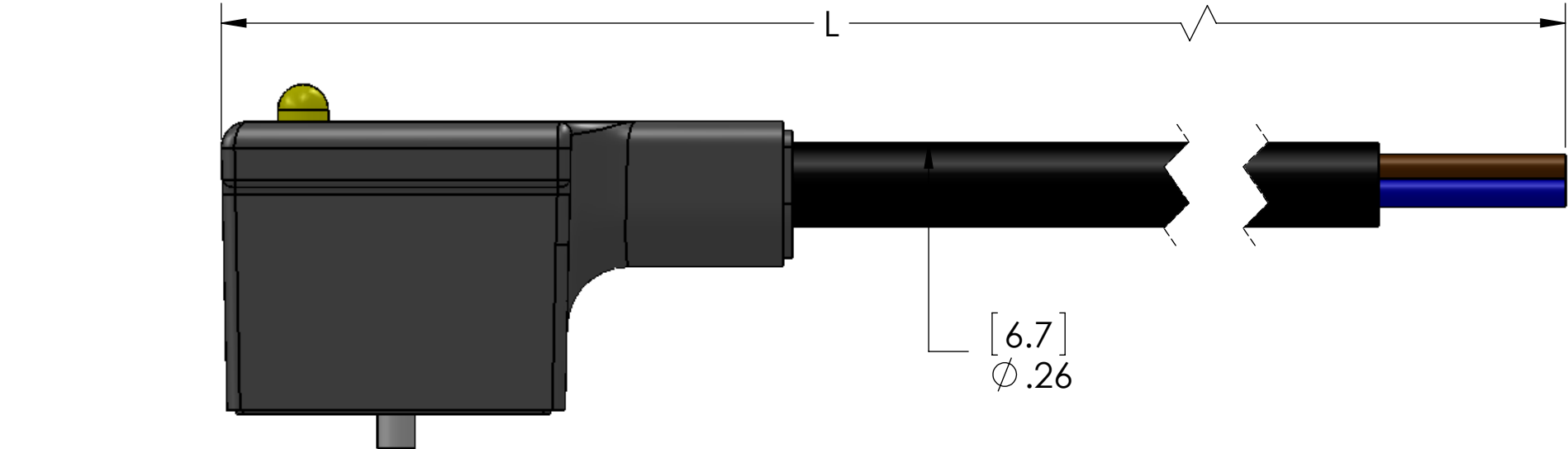
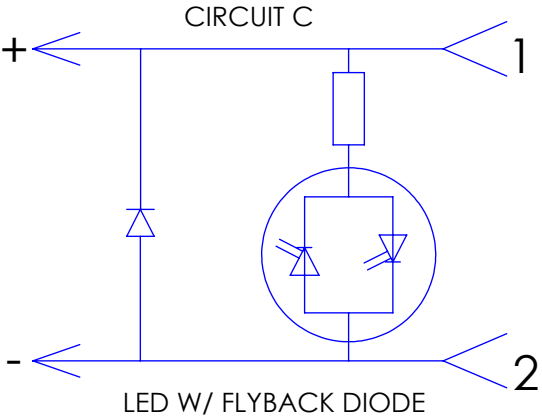


TABLE A

P/N	L
VAC-120-00	40" [1M]
VAC-220-00	79" [2M]
VAC-320-00	118" [3M]
VAC-420-00	157" [4M]
VAC-520-00	197" [5M]
VAC-620-00	236" [6M]
VAC-A20-00	393" [10M]

MATERIALS

BODY:	BLACK TPE
CONTACTS:	SILVER PLATED COPPER ALLOY
CABLE:	BLACK 18/3 OIL RESISTANT
GASKET:	THERMOPLASTIC
SCREW:	ZINC PLATED STEEL

PROPRIETARY AND CONFIDENTIAL
THE INFORMATION CONTAINED IN THIS
DRAWING IS THE SOLE PROPERTY OF
MENCOM CORPORATION. ANY
REPRODUCTION IN PART OR AS A WHOLE
WITHOUT THE WRITTEN PERMISSION OF
MENCOM CORPORATION IS
PROHIBITED.

VOLTS	10-50VDC
AMPS	10A

SPECIFICATIONS

UNLESS OTHERWISE SPECIFIED:

DIMENSIONS ARE IN METERS
AND MILLIMETERS

MATERIAL

FINISH

DO NOT SCALE DRAWING

NAME

BEM

DRAWN

CHECKED

ENG APPR.

MFG APPR.

Q.A.

COMMENTS:

MENCOM CORPORATION

TITLE:

DIN FORM A CABLE 2+E

SIZE

B

DWG. NO.

VAC-ZZ20-00

REV

B

SCALE: 2:1

WEIGHT:

SHEET 1 OF 1