

T-TYPE insulating STANDARD APPLICATIONS

inserts		page:
CD	40 poles + ⊕	70
CDD	72 poles + ⊕	79
CDS	27 poles + ⊕	-
CDSH	27 poles + ⊕	88
CNE	16 poles + ⊕	112
CSE	16 poles + ⊕	-
CSH	16 poles + ⊕	112
CSH S	16 poles + ⊕	124
CCE	16 poles + ⊕	132
CMSH, CMCE	6+2 (aux) poles + ⊕	138 - 139
CSS	16 poles + ⊕	150
CT, CTSE (16A) *)	16 poles + ⊕	162
CQE	32 poles + ⊕	170
CQEE	40 poles + ⊕	176
CP	6 poles + ⊕	178
CX	6/12, 6/36 and 12/2 poles + ⊕	197 - 199
CX	4/0 and 4/2 poles + ⊕	200 - 201
MIXO	4 modules	262 - 317

*) only for standard insulating version TCHI

housings with double lever

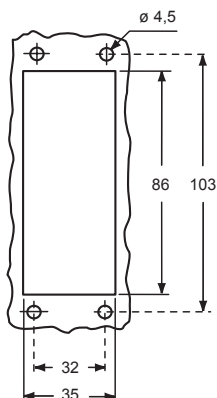


hoods with 4 pegs

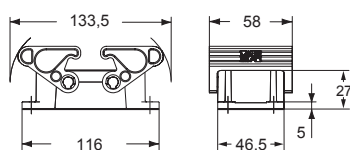


description	part No.	entry M	part No.	entry M
bulkhead mounting housing with thermoplastic levers	TCHI 16			
surface mounting housing, thermoplastic levers, high construction	TMAP 16.32	32		
surface mounting housing, thermoplastic levers, high construction	TMAP 16.40	40		
with pegs, side entry, high construction			TMAO 16.32	32
with pegs, side entry, high construction			TMAO 16.40	40
with pegs, top entry, high construction			TMAV 16.32	32
with pegs, top entry, high construction			TMAV 16.40	40

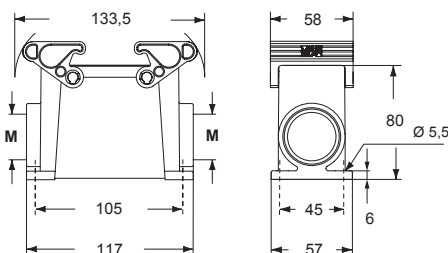
panel cut-out for bulkhead mounting housings



TCHI

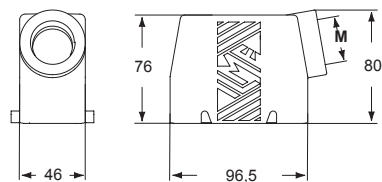


TMAP

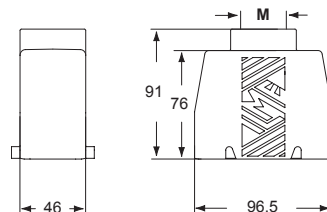


The surface mounting, high construction housings are supplied with an open threaded entry and diametrically opposite a closed threaded entry which can be opened by the user if required (with suitable tool).

TMAO



TMAV



CAVUS Type 12



ambient temperature limits -40 °C / +90 °C