

## T-TYPE insulating STANDARD APPLICATIONS

inserts		page:
CDD	24 poles + ⊕	76
CDS	9 poles + ⊕	-
CDSH	9 poles + ⊕	86
CDSH NC	6 poles + ⊕	95
CNE	6 poles + ⊕	110
CSE	6 poles + ⊕	-
CSH	6 poles + ⊕	110
CSH S	6 poles + ⊕	122
CCE	6 poles + ⊕	130
CSS	6 poles + ⊕	148
CT, CTSE (16A) *	6 poles + ⊕	160
CQE	10 poles + ⊕	168
MIXO	2 modules	262 - 317

\*) only for standard insulating version TCHI

## housings with single lever

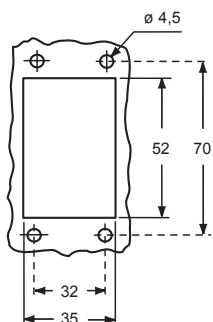


## hoods with 2 pegs

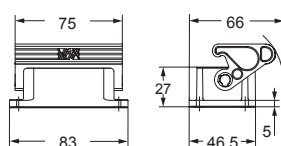


description	part No.	entry M	part No.	entry M
bulkhead mounting housing with thermoplastic lever	<b>TCHI 06 L</b>			
surface mounting housing with thermoplastic lever, high construction	<b>TMAP 06 L25</b>	25		
surface mounting housing with thermoplastic lever, high construction	<b>TMAP 06 L32</b>	32		
with pegs, side entry, high construction			<b>TMAO 06 L25</b>	25
with pegs, side entry, high construction			<b>TMAO 06 L32</b>	32
with pegs, top entry, high construction			<b>TMAV 06 L25</b>	25
with pegs, top entry, high construction			<b>TMAV 06 L32</b>	32

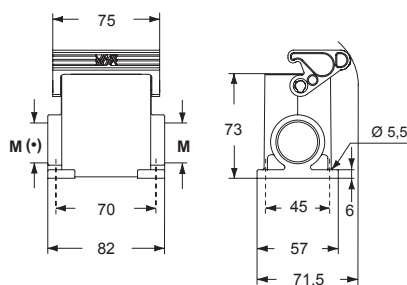
## panel cut-out for bulkhead mounting housings



## TCHI L

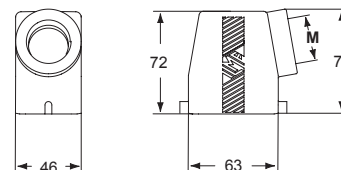


## TMAP L

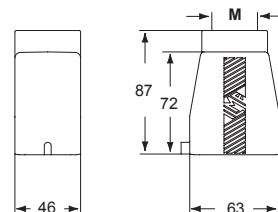


(\*) The surface mounting, high construction housings are supplied with an open threaded entry (\*) and diametrically opposite a closed threaded entry which can be opened by the user if required (with suitable tool).

## TMAO L



## TMAV L



**CAUS** Type 12



ambient temperature limits -40 °C / +90 °C