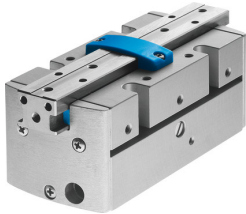


Parallel gripper HGPP-32-A-G1

Part number: 525665

FESTO



Data sheet

| Feature | Value |
|---|--|
| Size | 32 |
| Stroke per gripper jaw | 12.5 mm |
| Max. interchangeability | 0.1 mm |
| Pneumatic gripper repetition accuracy | ≤0.02 mm |
| Type code | HGPP |
| Number of gripper jaws | 2 |
| Mode of operation | Double-acting |
| Gripper function | Parallel |
| Gripping force backup | On opening |
| Design | Gear rack/pinion |
| Position sensing | For Hall sensor For inductive proximity sensors |
| Symbol | 00995947 |
| Operating pressure | 5 bar ... 8 bar |
| Max. operating frequency of pneumatic gripper | 4 Hz |
| Min. opening time at 6 bar | 64 ms |
| Min. closing time at 6 bar | 173 ms |
| Operating medium | Compressed air as per ISO 8573-1:2010 [7:4:4] |
| Information on operating and pilot media | Operation with oil lubrication possible (required for further use) |
| Corrosion resistance class (CRC) | 2 - Moderate corrosion stress |
| Ambient temperature | 5 °C ... 60 °C |
| Maximum force on gripper jaw Fz, static | 720 N |
| Maximum torque on gripper jaw, Mx static | 30 Nm |
| Maximum torque on gripper jaw, My static | 30 Nm |
| Maximum torque on gripper jaw, Mz static | 30 Nm |
| Max. mass per external gripper finger | 300 g |
| Product weight | 1438 g |
| Type of mounting | With internal thread |
| Pneumatic connection | G1/8 |
| Note on materials | Free of copper and PTFE |
| Cover cap material | POM |
| Housing material | Wrought aluminum alloy Hard-anodized |
| Gripper jaw material | Wrought aluminum alloy Nickel-plated |