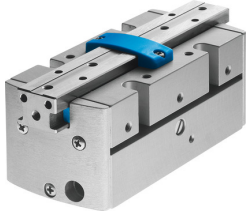


# Parallel gripper HGPP-12-A

Part number: 187867

FESTO



## Data sheet

| Feature  | Value  |
|--|--|
| Size   | 12   |
| Stroke per gripper jaw                           | 2.5 mm   |
| Max. interchangeability                          | 0.1 mm   |
| Pneumatic gripper repetition accuracy            | ≤0.02 mm   |
| Type code  | HGPP   |
| Number of gripper jaws                           | 2  |
| Mode of operation                                | Double-acting  |
| Gripper function                                 | Parallel   |
| Design   | Gear rack/pinion   |
| Position sensing                                 | For Hall sensor<br>For inductive proximity sensors                 |
| Symbol   | 00991894   |
| Total gripping force at 6 bar, opening           | 116 N  |
| Total gripping force at 6 bar, closing           | 116 N  |
| Operating pressure                               | 2 bar ... 8 bar  |
| Max. operating frequency of pneumatic gripper    | 4 Hz   |
| Min. opening time at 6 bar                       | 27 ms  |
| Min. closing time at 6 bar                       | 40 ms  |
| Operating medium                                 | Compressed air as per ISO 8573-1:2010 [7:4:4]                      |
| Information on operating and pilot media         | Operation with oil lubrication possible (required for further use) |
| Corrosion resistance class (CRC)                 | 2 - Moderate corrosion stress                                      |
| Ambient temperature                              | 5 °C ... 60 °C   |
| Gripping force per gripper jaw at 6 bar, opening | 58 N   |
| Gripping force per gripper jaw at 6 bar, closing | 58 N   |
| Maximum force on gripper jaw Fz, static          | 70 N   |
| Maximum torque on gripper jaw, Mx static         | 3 Nm   |
| Maximum torque on gripper jaw, My static         | 3 Nm   |
| Maximum torque on gripper jaw, Mz static         | 3 Nm   |
| Max. mass per external gripper finger            | 100 g  |
| Product weight                                   | 172 g  |
| Type of mounting                                 | With internal thread   |
| Pneumatic connection                             | M3   |
| Note on materials                                | Free of copper and PTFE  |
| Cover cap material                               | POM  |
| Housing material                                 | Wrought aluminum alloy<br>Hard-anodized                            |

| Feature              | Value                                   |
|----------------------|---|
| Gripper jaw material | Wrought aluminum alloy<br>Nickel-plated |