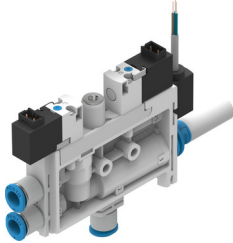


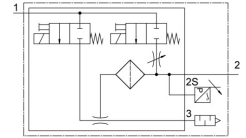
Vacuum generator OVEL-10-H-15-PQ-VQ6-UA-C-A-V1V-H3

Part number: 8049051

FESTO



Data sheet



Feature	Value
Electrical connection output, function	Sensor
Electrical connection for input, connection pattern	00995626
Electrical connection input, function	Ejector pulse Vacuum generator
Electrical connection input, connection type	2x plugs
Electrical connection output, connection type	Cable
Analog output	0 - 10 V
Electrical connection output, connection technology	Open end
Material of cable sheath	PVC
Electrical input connection, mounting type	Snap-locking
Cable characteristic	Suitable for energy chains
Method of measurement	Piezoresistive pressure sensor
Electrical input connection, connection technology	Connection diagram H
Color cable sheath	Gray
Cable diameter tolerance	± 0.1 mm
KC characters	KC EMC
Electrical connection, input, number of pins/wires	2
Electrical output connection, number of pins/wires	3
Nominal width of Laval nozzle	0.95 mm
Nominal conductor cross section	0.14 mm ²
Cable diameter	2.9 mm
Cable length	2.5 m
DC sensor operating voltage range	18 V ... 30 V
Air supply time at nominal operating pressure with ejector pulse	1 s
Width dimension	15 mm
Type code	OVEL
Muffler construction type	Open
Mounting position	Any
Ejector characteristics	High vacuum Standard
Grade of filtration	40 µm
Manual override	Non-detenting
Integrated function	Electric ejector pulse Flow control Pressure transmitter Shut off valve, electric Compressed air filter Pneumatic muffler open

Feature	Value
Design	T-shape
Symbol	00995804
Valve function	Closed
Operating pressure for max. suction rate	4 bar
Operating pressure	2 bar ... 7 bar
Operating pressure for max. vacuum	3.8 bar
Max. vacuum	92 %
Nominal operating pressure	4 bar
Max. suction rate with respect to atmosphere	21 l/min
DC operating voltage range	21.6 V ... 26.4 V
Duty cycle	100%
Coil characteristics	24 V DC: 1.0 W
Operating medium	Compressed air as per ISO 8573-1:2010 [7:4:4]
Information on operating and pilot media	Operation with oil lubrication not possible
CE marking (see declaration of conformity)	As per EU EMC directive
Corrosion resistance class (CRC)	2 - Moderate corrosion stress
Temperature of medium	0 °C ... 50 °C
Noise level at nominal operating pressure	68 dB(A)
Degree of protection	IP40
Ambient temperature	0 °C ... 50 °C
Product weight	89 g
Pressure measuring range	-1 bar ... 0 bar
Type of mounting	With through-hole
Pneumatic connection 1	For pneumatic tubing outside diameter 6 mm
Pneumatic connection 3	Pneumatic muffler open
Vacuum connection	For pneumatic tubing outside diameter 6 mm
Material of connecting thread	POM
Note on materials	RoHS-compliant
Seals material	NBR
Female nozzle material	POM
Compressed air filter material	POM
Housing material	PA-reinforced
Material of adjusting screw	Steel
Muffler material	PE
Material of screws	Steel
Material of jet nozzle	Wrought aluminum alloy