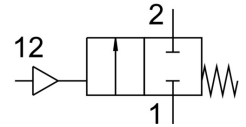
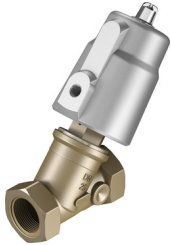


Angle seat valve VZXF-L-M22C-M-A-G114-290-H3ALV-80-V

FESTO

Part number: 3536830



Data sheet

Feature	Value
Type code	VZXF
Design	Poppet valve with piston actuator
Actuation type	Pneumatic
Sealing principle	Soft
Mounting position	Any
Type of mounting	Line installation
Cable connection	Threaded sleeve G1 1/4 as per DIN ISO 228
Nominal width	29 mm
Valve function	2/2, closed, monostable
Flow direction	Non-reversible
Medium pressure	-0.9 bar ... 0 bar
Nominal pressure of fitting PN	16
Exhaust air function	Without flow control option
Reset method	Mechanical spring
Type of control	Externally controlled
Pneumatic connection	Internal thread G1/8
Operating pressure	6 bar ... 10 bar
Symbol	00991367
Medium	Vapor Inert gas Filtered compressed air, 200 µm filter mesh
Flow direction	Above valve seat, for gaseous media
Operating medium	Compressed air as per ISO 8573-1:2010 [7:4:4]
Max. viscosity	600 mm ² /s
Temperature of medium	-10 °C ... 80 °C
Ambient temperature	-10 °C ... 60 °C
Flow rate Kv	21.5 m ³ /h
Note on materials	Contains paint-wetting impairment substances RoHS-compliant
Valve housing material	Red brass
Material number, fitting housing	CC499K
Spindle seal material	FPM
Seat seal material	FPM
Product weight	2300 g
Corrosion resistance class (CRC)	0 - No corrosion stress
Drive housing material	Aluminum