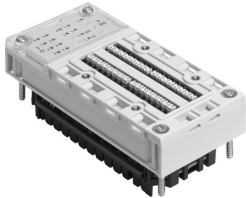


Input/output module CPX-2ZE2DA

Part number: 576046

FESTO



Data sheet

Feature	Value
Dimensions W x L x H	(incl. interlinking block and connection system) 50 mm x 107 mm x 50 mm
Width dimension	50 mm
Type code	CPX
No. of outputs	2
No. of inputs	2
Diagnostics	Operating-mode-dependent diagnostics
Parameterization	On/off delay Frequency output Speed measurement Pulse output Pulse train Rotational speed measurement Frequency measurement Period duration measurement Motor operating mode Position determination Pulse width modulation One-off counting Infinite counting Periodic counting
LED indicators	1 group diagnostics 10 channel status 2 module diagnostics 2 channel diagnostics
Input debounce time	0.1 µs (0.2µs,0.4µs,0.8µs,1µs,2µs,4µs,8µs,10µs,50µs,100µs,500µs,1ms,3ms,10ms,20ms parameterizable)
Fuse protection (short circuit)	Internal electronic fuse per channel
DC operating voltage range	18 V ... 30 V
Intrinsic current consumption at nominal operating voltage	Typ. 35 mA
Max. power supply per channel	5 A adjustable (20 W lamp load)
Max. residual current of outputs per module	10 A
Max. residual current of inputs per module	2 A
Nominal operating voltage DC	24 V
Electrical isolation between channel and internal bus	Outputs - yes, when using an intermediate supply
Electrical isolation between channels	no
Switching level	Signal 0: ≤ 5 V Signal 1: ≥ 11 V
Corrosion resistance class (CRC)	1 - Low corrosion stress (when installed)
Storage temperature	-20 °C ... 70 °C

Feature	Value
Degree of protection	IP65 IP67
Ambient temperature	-5 °C ... 50 °C
Certification	UL - Recognized (OL)
Product weight	130 g
Characteristic curve outputs	IEC1131-T2
Input characteristics	As per IEC 1131-2, type 02
Max. cable length	30 m
Input switching logic	PNP (positive switching)
Switching logic at outputs	NPN (negative switching) PNP (positive switching) Push-pull driver
Note on materials	RoHS-compliant
Housing material	Polymer