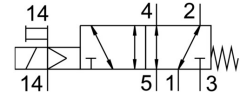
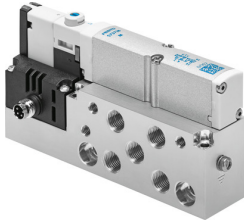


Air solenoid valve VMPA14-M1H-MS-G1/8-PI

Part number: 8023554

FESTO



Data sheet

Feature	Value
Valve function	5/2, monostable
Relative air humidity	Max. 90 % at 40 °C
Lap	Overlap
Note on standard nominal flow rate	MPA-L: 670 l/min MPA-S: 550 l/min
Operating pressure	0.3 MPa ... 0.8 MPa
Pilot pressure MPa	0.3 MPa ... 0.8 MPa
Actuation type	Electrical
Valve size	14 mm
Standard nominal flow rate	550 l/min ... 670 l/min
Pneumatic working port	G1/8
Operating voltage	24V DC
Operating pressure	3 bar ... 8 bar
Design	Piston gate valve
Reset method	Mechanical spring
Degree of protection	IP65 as per IEC 60529
Certification	c CSA us (OL) c UL us - Recognized (OL)
Type code	VMPA14
Exhaust air function	With flow control option
Sealing principle	Soft
Mounting position	Any
Manual override	Detenting Non-detenting
Type of control	Pilot-controlled
Pilot air supply port	Internal
Flow direction	Reversible
Symbol	00991190
Signal status display	yes
Pilot pressure	3 bar ... 8 bar
Suitability for vacuum	yes
Standard nominal flow rate with QS-8	550 l/min ... 670 l/min
Max. switching frequency	2 Hz
Switching time off	30 ms
On switching time	10 ms
Max. positive test pulse with 0 signal	400 µs

Feature	Value
Max. negative test pulse on 1 signal	200 µs
Permissible voltage fluctuations	+/- 25 %
Operating medium	Compressed air as per ISO 8573-1:2010 [7:4:4]
Information on operating and pilot media	Operation with oil lubrication possible (required for further use)
CE marking (see declaration of conformity)	As per EU EMC directive
Vibration resistance	Transport application test with severity level 2 as per FN 942017-4 and EN 60068-2-6
Shock resistance	Shock test with severity level 2 as per FN 942017-5 and EN 60068-2-27
Corrosion resistance class (CRC)	1 - Low corrosion stress
Storage temperature	-20 °C ... 40 °C
Temperature of medium	-5 °C ... 50 °C
Ambient temperature	-5 °C ... 50 °C
Max. tightening torque for valve mounting	0.65 Nm
Product weight	255 g
Electrical connection	4-pin M8x1 Plug as per EN 60947-5-2
Type of mounting	With through-hole
Pneumatic connection 1	G1/8
Pneumatic connection 2	G1/8
Pneumatic connection 3	G1/8
Pneumatic connection 4	G1/8
Pneumatic connection 5	G1/8
Note on materials	RoHS-compliant
Seals material	NBR
Housing material	Die-cast aluminum