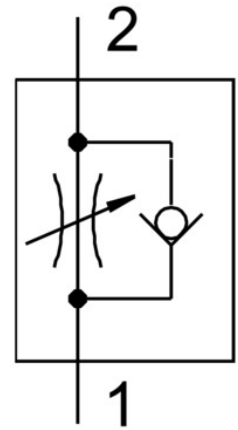


One-way flow control valve VFOH-LE-A-G14-Q10

Part number: 578801

FESTO



Data sheet

Feature	Value
Type code	VFOH-LE
Valve function	Exhaust air flow control non-return function
Pneumatic connection 1	QS-10
Pneumatic connection 2	G1/4
Actuation type	Manual
Adjusting element	External hexagon
Type of mounting	Screw-in
Standard nominal flow rate in flow control direction	520 l/min
Standard nominal flow rate in non-return direction	345 l/min ... 535 l/min
Ambient temperature	0 °C ... 150 °C
Mounting position	Any
Symbol	00991452
Operating pressure for entire temperature range	0.2 bar ... 10 bar
Standard flow rate in flow control direction 6 -> 0 bar	840 l/min
Standard flow rate in non-return direction at 6 -> 0 bar	635 l/min ... 790 l/min
Operating medium	Compressed air as per ISO 8573-1:2010 [7:4:4]
Information on operating and pilot media	Operation with oil lubrication possible (required for further use)
Storage temperature	-10 °C ... 150 °C
Temperature of medium	0 °C ... 150 °C
Nominal tightening torque	5 Nm
Tolerance for nominal tightening torque	± 10%
Product weight	48 g
Note on materials	Free of copper and PTFE RoHS-compliant
Seals material	FPM
Hollow bolt material	Wrought aluminum alloy
Releasing ring material	Brass, nickel-plated
Material of adjusting screw	High-alloy stainless steel

Feature	Value
Swivel joint material	Brass Nickel-plated