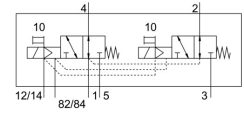
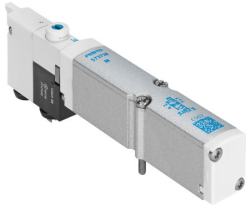


# Air solenoid valve VMPA14-M1HF-NS-PI

Part number: 578819

**FESTO**



## Data sheet

Feature	Value
Valve function	2x3/2, open, monostable
Relative air humidity	Max. 90 % at 40 °C
Lap	Overlap
Note on standard nominal flow rate	MPA-L: 520 l/min MPA-S: 470 l/min
Operating pressure	-0.09 MPa ... 0.8 MPa
Pilot pressure MPa	0.3 MPa ... 0.8 MPa
Actuation type	Electrical
Valve size	14 mm
Standard nominal flow rate	470 l/min ... 520 l/min
Operating voltage	24V DC
Operating pressure	-0.9 bar ... 8 bar
Design	Piston gate valve
Reset method	Mechanical spring
Degree of protection	IP65 as per IEC 60529
Certification	c UL us - Recognized (OL)
Type code	VMPA14
Sealing principle	Soft
Mounting position	Any
Manual override	Detenting Non-detenting
Type of control	Pilot-controlled
Flow direction	Reversible
Symbol	00992875
Signal status display	yes
Pilot pressure	3 bar ... 8 bar
Suitability for vacuum	yes
Standard nominal flow rate with QS-8	470 l/min ... 520 l/min
Switching time off	20 ms
On switching time	12 ms
Max. positive test pulse with 0 signal	400 µs
Max. negative test pulse on 1 signal	200 µs
Permissible voltage fluctuations	+/- 25 %
Operating medium	Compressed air as per ISO 8573-1:2010 [7:4:4]
Information on operating and pilot media	Operation with oil lubrication possible (required for further use)

Feature	Value
CE marking (see declaration of conformity)	As per EU EMC directive
Vibration resistance	Transport application test with severity level 2 as per FN 942017-4 and EN 60068-2-6
Shock resistance	Shock test with severity level 2 as per FN 942017-5 and EN 60068-2-27
Corrosion resistance class (CRC)	1 - Low corrosion stress
Storage temperature	-20 °C ... 40 °C
For use in the food industry	See supplementary material information
Temperature of medium	-5 °C ... 50 °C
Ambient temperature	-5 °C ... 60 °C
Max. tightening torque for valve mounting	0.65 Nm
Product weight	77 g
Type of mounting	With through-hole
Note on materials	RoHS-compliant
Seals material	NBR
Housing material	Die-cast aluminum